

Measurement of Transverse Spin Dependent Azimuthal Correlations of Charged Pion(s) in $p^\uparrow p$ Collisions at $\sqrt{s} = 200$ GeV at STAR

Babu R. Pokhrel^{1*} on behalf of the STAR Collaboration

1 Temple University, Philadelphia, USA

* babu.pokhrel@temple.edu



Proceedings for the XXVIII International Workshop on Deep-Inelastic Scattering and Related Subjects, Stony Brook University, New York, USA, 12-16 April 2021
doi:[10.21468/SciPostPhysProc.8](https://doi.org/10.21468/SciPostPhysProc.8)

Abstract

At the leading twist, the transversity distribution function, $h_1^q(x)$, where x is the longitudinal momentum fraction of the proton carried by quark q , encodes the transverse spin structure of the nucleon. Extraction of it is difficult because of its chiral-odd nature. In transversely polarized proton-proton collisions ($p^\uparrow p$), $h_1^q(x)$ can be coupled with another chiral-odd partner, a spin-dependent fragmentation function (FF). The resulting asymmetries in hadron(s) azimuthal correlations directly probe $h_1^q(x)$. We report the measurement of correlation asymmetries for charged pion(s) in $p^\uparrow p$, through the Collins and the Interference FF channel.



Copyright B. R. Pokhrel *et al.*

This work is licensed under the Creative Commons

[Attribution 4.0 International License](https://creativecommons.org/licenses/by/4.0/).

Published by the SciPost Foundation.

Received 31-07-2021

Accepted 06-05-2022

Published 12-07-2022

doi:[10.21468/SciPostPhysProc.8.047](https://doi.org/10.21468/SciPostPhysProc.8.047)



Check for updates

1 Introduction

At the leading twist, the nucleon structure is fully described by three Parton Distribution Functions (PDFs): the unpolarized PDF, $f_1(x)$, the helicity PDF, $g_1(x)$, and the transversity PDF, $h_1^q(x)$, where x is the nucleon momentum fraction carried by partons. Although, $f_1(x)$ and $g_1(x)$ are reasonably well constrained by experimental data [1, 2], the knowledge of $h_1^q(x)$ is limited to the semi inclusive deep inelastic scattering (SIDIS) and e^+e^- data [3]. This is because $h_1^q(x)$ is a chiral-odd object and it needs to be coupled with another chiral-odd partner to form a chiral-even cross section that is experimentally observable.

In polarized proton-proton collisions ($p^\uparrow p$), $h_1^q(x)$ can be coupled with chiral-odd spin-dependent fragmentation functions (FFs). Selecting inclusive charged hadrons within jets, collimated sprays of particles produced by fragmentation and hadronization of partons in high energy collisions, involves the Collins FF, whereas selecting oppositely charged di-hadron pairs in the final state involves the interference FF (IFF). In both channels, the coupling of $h_1^q(x)$ with the respective FF results in experimentally measurable azimuthal correlation asymmetry, A_{UT} , which is sensitive to $h_1^q(x)$.

2 Experiment and Dataset

The Relativistic Heavy-Ion Collider (RHIC) at Brookhaven National Laboratory (BNL) is capable of colliding bunched beams of polarized protons up to a center-of-mass energy (\sqrt{s}) of 510 GeV. The Solenoidal Tracker At RHIC (STAR) is one of the major experiments, where the Time Projection Chamber (TPC) is the main detector that provides particle tracking and identification in the mid-pseudorapidity region ($-1 < \eta < 1$) and over the whole 2π range in azimuthal angle [4]. The time-of-flight detector (TOF) [5], with a similar coverage as the TPC, improves the STAR's PID capability. The barrel electromagnetic calorimeter (BEMC) provides event triggering based on the energy deposited in its towers.

STAR firstly observed the IFF asymmetry based on 2006 $p^\uparrow p$ data at $\sqrt{s} = 200$ GeV [6], followed by the 2011 data at $\sqrt{s} = 500$ GeV [7], and the Collins asymmetry based on 2011 data at $\sqrt{s} = 500$ GeV [8]. STAR collected additional $p^\uparrow p$ data at $\sqrt{s} = 200$ GeV in 2012 and 2015. These datasets correspond to the integrated luminosities, L , of $\sim 14 \text{ pb}^{-1}$ and $\sim 52 \text{ pb}^{-1}$, respectively, with the average beam polarization of $\sim 58\%$. They provide the most precise measurements of the Collins and the IFF asymmetries in $p^\uparrow p$ at $\sqrt{s} = 200$ GeV to date, especially at quark momentum fractions $0.1 < x < 0.4$. The combined 2012 and 2015 dataset is used for the Collins analysis and only 2015 dataset is used for the IFF analysis.

3 Results

The Collins and the IFF asymmetries for charged pion(s) are extracted using the cross-ratio formula [9],

$$A_{UT} \cdot \sin(\phi) = \frac{1}{P} \cdot \frac{\sqrt{N_{1,\alpha}^\uparrow N_{1,\beta}^\downarrow} - \sqrt{N_{1,\alpha}^\downarrow N_{1,\beta}^\uparrow}}{\sqrt{N_{1,\alpha}^\uparrow N_{1,\beta}^\downarrow} + \sqrt{N_{1,\alpha}^\downarrow N_{1,\beta}^\uparrow}}, \quad (1)$$

where, $N^{\uparrow(\downarrow)}$ is the number of π^\pm within jets (Collins channel) or exclusive $\pi^+\pi^-$ pairs (IFF channel) when the beam polarization is $\uparrow(\downarrow)$, in the respective detector halves, α and β . P is the average beam polarization. The azimuthal angle definitions and asymmetry extraction approach for the IFF and the Collins channels are based on the STAR publications [6] and [8], respectively. The mechanism of producing azimuthal correlations and its extraction from a theoretical point of view can be found in [10].

High-quality tracks are selected by applying several quality cuts and charged pions are identified by measuring their ionization energy loss, $\langle dE/dx \rangle$. For both channels, pions are selected by requiring a cut on the number of standard deviations of measured $\langle dE/dx \rangle$ from the expected pion energy loss, $-1 < n\sigma_\pi < 2$. Furthermore, we find that the TOF enhances the particle identification (PID) in the momentum region where the TPC dE/dx between particle species overlaps. The Collins analysis utilizes both TPC and TOF information for PID in those regions, whereas the IFF analysis only makes use of the TPC. For both analyses, the average π^\pm purity reaches $\sim 90\%$ in different kinematic regions. However, IFF analysis uses $\pi^+\pi^-$ pairs, whose combined purity is $\sim 80\%$.

To estimate the trigger bias on the measurements, PYTHIA 6 [11] events are run through the STAR detector simulation implemented in GEANT 3 [12] and embedded into zero-bias events. The magnitude of the bias is determined by calculating the fraction of quark events at the detector level (GEANT) and at the particle level (PYTHIA) and taking a ratio between them. The effect of particle impurity and the trigger bias correction are the two main sources of systematic uncertainties.

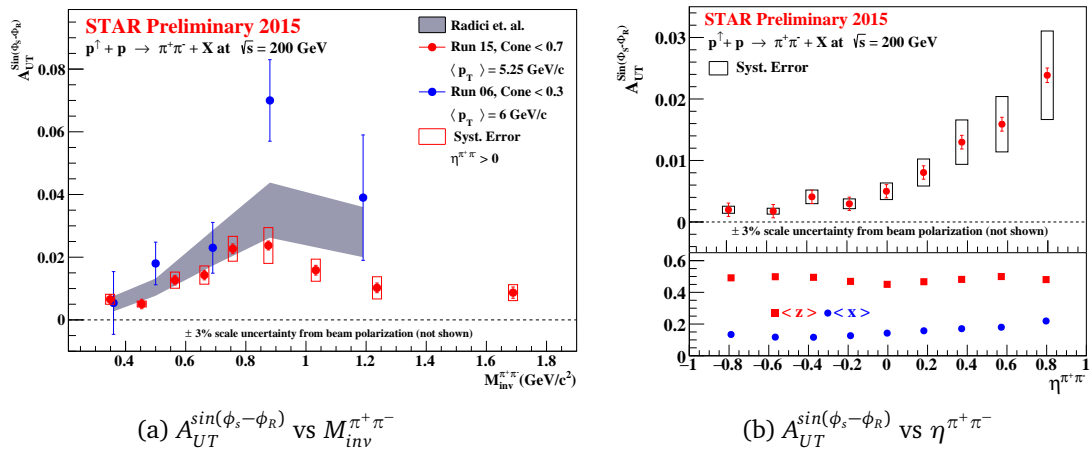


Figure 1: STAR IFF asymmetries: **1a)** $A_{UT}^{sin(\phi_s - \phi_R)}$ as a function of invariant mass of two oppositely-charged pions, $M_{inv}^{\pi^+\pi^-}$, in $\eta^{\pi^+\pi^-} > 0$ region, compared with the theoretical calculation from [13]. The cone cut ($\sqrt{(\eta^{\pi^+} - \eta^{\pi^-})^2 + (\phi^{\pi^+} - \phi^{\pi^-})^2} < 0.7$) ensures that the π^+ and π^- are close enough in $\eta - \phi$ space. **1b)** $A_{UT}^{sin(\phi_s - \phi_R)}$ as a function of $\eta^{\pi^+\pi^-}$, integrated over $M_{inv}^{\pi^+\pi^-}$ and $p_T^{\pi^+\pi^-}$ (top panel). The quark $\langle z \rangle$ and $\langle x \rangle$, in the corresponding $\eta^{\pi^+\pi^-}$ bins, are shown in the bottom panel.

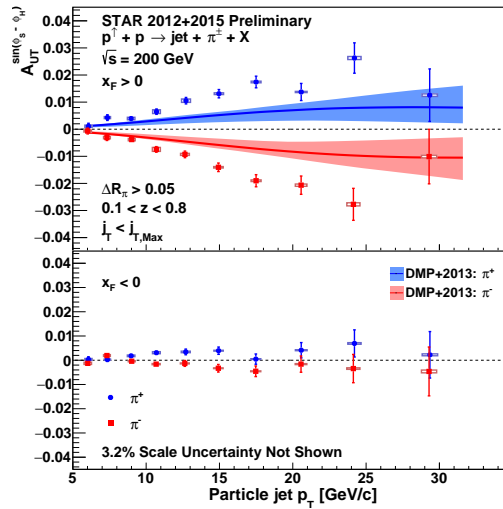


Figure 2: STAR Collins asymmetry: $A_{UT}^{sin(\phi_s - \phi_H)}$ as a function of the particle-jet p_T in forward ($x_f > 0$) (top panel) and backward ($x_f < 0$) jet scattering directions (bottom panel), for the π^\pm within jets, compared with the theoretical calculation from [15].

Figure 1a depicts preliminary results for the IFF asymmetry, $A_{UT}^{sin(\phi_s - \phi_R)}$, as a function of invariant mass of $\pi^+\pi^-$ pair, $M_{inv}^{\pi^+\pi^-}$, in forward $\pi^+\pi^-$ pseudorapidity ($\eta^{\pi^+\pi^-} > 0$) region. It is integrated over the transverse momentum of the $\pi^+\pi^-$ pair, $p_T^{\pi^+\pi^-}$, in the interval 2.5 to 15 GeV/c. The $A_{UT}^{sin(\phi_s - \phi_R)}$ signal is enhanced around $M_{inv}^{\pi^+\pi^-} \sim 0.8$ GeV/c², which is consistent with the previous STAR measurements [6, 7] and the theoretical calculation at $\sqrt{s} = 200$ GeV [13] incorporating SIDIS, e^+e^- , and STAR 2006 $p^\uparrow p$ results. This enhancement, close to ρ -meson mass ($M_\rho \sim 0.775$ GeV/c²), is expected and consistent with a IFF model calculation [14]. The corresponding $A_{UT}^{sin(\phi_s - \phi_R)}$ in the backward pseudorapidity region ($\eta^{\pi^+\pi^-} < 0$) is small.

Figure 1b shows $A_{UT}^{sin(\phi_s-\phi_R)}$ as a function of $\eta^{\pi^+\pi^-}$, integrated over $M_{inv}^{\pi^+\pi^-}$ and $p_T^{\pi^+\pi^-}$ (*upper panel*). The average x , fractional proton momentum carried by a quark, and z , fractional quark energy carried by the $\pi^+\pi^-$ pair, are estimated from GEANT simulation in the corresponding $\eta^{\pi^+\pi^-}$ bins and shown in the bottom panel. $A_{UT}^{sin(\phi_s-\phi_R)}$ increases linearly with $\eta^{\pi^+\pi^-}$ in the forward region. The small asymmetry signal in the backward $\eta^{\pi^+\pi^-}$ region is mainly due to scattering from a quark at lower x , which is typically associated with the unpolarized beam. A strong correlation between the observed asymmetry and x can be seen, where x ranges from ~ 0.1 to 0.22 from backward to forward $\eta^{\pi^+\pi^-}$. However, z shows no clear dependence, the average of which is ~ 0.46 . The 2015 IFF results corroborate previous 2006 [6] and 2011 [7] results.

Preliminary results for the Collins asymmetry, $A_{UT}^{sin(\phi_s-\phi_H)}$, as a function of particle jet p_T are shown in figure 2. A significant positive asymmetry for π^+ and negative asymmetry for π^- is observed in the $x_f > 0$ region (*upper panel*). Though small, $A_{UT}^{sin(\phi_s-\phi_H)}$ follows a similar charge dependence in the $x_f < 0$ region as well (*lower panel*). This charge-dependence is consistent with a theoretical calculation [15] and the Collins asymmetry in SIDIS [16]. Although the theoretical calculation undershoots data, they both follow a similar trend. This result shows a large asymmetry signal with higher statistical precision than previous STAR Collins analysis [8]. The Collins analysis is also performed for the identified kaon (K) and proton (p). It is found that the Collins asymmetry for K^+ is about the size of π^+ within the statistical uncertainties, while K^- and $p(\bar{p})$ asymmetries are consistent to zero.

4 Conclusion

STAR has measured charged pion(s) correlation asymmetries through the IFF channel based on 2015 and the Collins channel based on 2012+2015 $p^\uparrow p$ data at $\sqrt{s} = 200$ GeV. These datasets cover the Q^2 at the order of ~ 100 GeV² at intermediate x , which is well within the valance quark region. The measured IFF asymmetry signal is enhanced around $M_{inv}^{\pi^+\pi^-} \sim 0.8$ GeV/ c^2 , which is consistent with the theoretical calculation and the previous STAR measurements. A large asymmetry in the forward $\eta^{\pi^+\pi^-}$ region corresponds to higher x , where quark transversity is expected to be sizeable, whereas the backward asymmetries are small since the probed low- x quarks are mainly from the unpolarized proton. The large Collins asymmetry, as a function of particle jet p_T , is larger than the theory prediction in the $x_f > 0$ region, but exhibits a similar trend, whereas the asymmetry in the $x_f < 0$ region is small. The charge-dependence of $\pi^+(\pi^-)$ asymmetry is consistent with the Collins asymmetry found in SIDIS. The statistical precision of these results is largely improved with respect to previous STAR results. The systematic uncertainty includes the effect from the PID and trigger bias, which is well understood in the Collins analysis. However, the large systematic uncertainty in the IFF analysis is dominated by the PID effect, which will be reduced in the near future. These high precision IFF and Collins asymmetry measurements will help to constrain the valance-quark transversity distributions and test the universality of the mechanism producing such asymmetries in different collision processes: SIDIS, e^+e^- , and $p^\uparrow p$.

Acknowledgements

We thank Marco Radici (INFN Pavia, Italy) for providing IFF asymmetry theory curve. We thank the RHIC Operations Group and RCF at BNL. This work was supported by the Office of the Nuclear Physics within the U.S. DOE Office of Science.

References

- [1] H. Abramowicz et al., *Combination of measurements of inclusive deep inelastic $e^\pm p$ scattering cross sections and QCD analysis of HERA data*, Eur. Phys. J. C **75**, 580 (2015), doi:[10.1140/epjc/s10052-015-3710-4](https://doi.org/10.1140/epjc/s10052-015-3710-4).
- [2] D. de Florian, R. Sassot, M. Stratmann and W. Vogelsang, *Extraction of spin-dependent parton densities and their uncertainties*, Phys. Rev. D **80**, 034030 (2009), doi:[10.1103/PhysRevD.80.034030](https://doi.org/10.1103/PhysRevD.80.034030).
- [3] Z.-B. Kang, A. Prokudin, P. Sun and F. Yuan, *Extraction of quark transversity distribution and Collins fragmentation functions with QCD evolution*, Phys. Rev. D **93**, 014009 (2016), doi:[10.1103/PhysRevD.93.014009](https://doi.org/10.1103/PhysRevD.93.014009).
- [4] K. H. Ackermann et al., *STAR detector overview*, Nucl. Instrum. Meth. A **499**, 624 (2003), doi:[10.1016/S0168-9002\(02\)01960-5](https://doi.org/10.1016/S0168-9002(02)01960-5).
- [5] W. J. Llope, *The large-area time-of-flight upgrade for STAR*, Nucl. Instrum. Meth. A **241**, 306 (2005), doi:[10.1016/j.nimb.2005.07.089](https://doi.org/10.1016/j.nimb.2005.07.089).
- [6] L. Adamczyk et al., *Observation of Transverse Spin-Dependent Azimuthal Correlations of Charged Pion Pairs in $p^\uparrow + p$ at $\sqrt{s} = 200$ GeV*, Phys. Rev. Lett. **115**, 242501 (2015), doi:[10.1103/PhysRevLett.115.242501](https://doi.org/10.1103/PhysRevLett.115.242501).
- [7] L. Adamczyk et al., *Transverse spin-dependent azimuthal correlations of charged pion pairs measured in $p^\uparrow + p$ collisions at $\sqrt{s} = 500$ GeV*, Phys. Lett. B **780**, 332 (2018), doi:[10.1016/j.physletb.2018.02.069](https://doi.org/10.1016/j.physletb.2018.02.069).
- [8] L. Adamczyk et al., *Azimuthal transverse single-spin asymmetries of inclusive jets and charged pions within jets from polarized-proton collisions at $\sqrt{s} = 500$ GeV*, Phys. Rev. D **97**, 032004 (2018), doi:[10.1103/PhysRevD.97.032004](https://doi.org/10.1103/PhysRevD.97.032004).
- [9] G. G. Ohlsen and P. W. Keaton, *Techniques for measurement of and spin-1 polarization analyzing tensors*, Nucl. Instr. Meth. **109**, 41 (1973), doi:[10.1016/0029-554X\(73\)90450-3](https://doi.org/10.1016/0029-554X(73)90450-3).
- [10] A. Bacchetta and M. Radici, *Dihadron interference fragmentation functions in proton-proton collisions*, Phys. Rev. D **70**, 094032 (2004), doi:[10.1103/physrevd.70.094032](https://doi.org/10.1103/physrevd.70.094032).
- [11] T. Sjöstrand, S. Mrenna and P. Skands, *PYTHIA 6.4 physics and manual*, J. High Energy Phys. **05**, 026 (2006), doi:[10.1088/1126-6708/2006/05/026](https://doi.org/10.1088/1126-6708/2006/05/026).
- [12] R. Brun et al., *Simulation program for particle physics experiments, GEANT: user guide and reference manual*, CERN, Geneva (1978).
- [13] M. Radici, *Private communication*.
- [14] R. L. Jaffe, X. Jin and J. Tang, *Interference fragmentation functions and valence quark spin distributions in the nucleon*, Phys. Rev. D **57**, 5920 (1998), doi:[10.1103/physrevd.57.5920](https://doi.org/10.1103/physrevd.57.5920).
- [15] U. D'Alesio, F. Murgia and C. Pisano, *Testing the universality of the Collins function in pion-jet production at RHIC*, Phys. Lett. B **773**, 300 (2017), doi:[10.1016/j.physletb.2017.08.023](https://doi.org/10.1016/j.physletb.2017.08.023).

- [16] X. Qian et al., *Single Spin Asymmetries in Charged Pion Production from Semi-Inclusive Deep Inelastic Scattering on a Transversely Polarized ^3He Target*, Phys. Rev. Lett. **107**, 072003 (2011), doi:[10.1103/PhysRevLett.107.072003](https://doi.org/10.1103/PhysRevLett.107.072003).