

Sivers extraction with Neural Network

I. P. Fernando, N. Newton, D. Seay & D. Keller

Department of Physics, University of Virginia, Charlottesville, VA 22904, USA

* ishara@virginia.edu

July 31, 2021



*Proceedings for the XXVIII International Workshop
on Deep-Inelastic Scattering and Related Subjects,
Stony Brook University, New York, USA, 12-16 April 2021*
doi:[10.21468/SciPostPhysProc.7](https://doi.org/10.21468/SciPostPhysProc.7)

Abstract

Pseudo-data with simulated experimental errors can be generated to train an ensemble of Artificial Neural Networks (ANN) implemented on a regression to extract Transverse Momentum-dependent Distributions (TMDs). A preliminary analysis is presented on the reliability in extraction of the Sivers function imposed in the pseudo-data given the bounds on the experimental errors, data sparsity, and complexity of phase-space.

Contents

1	Introduction	1
2	Sivers asymmetry from SIDIS	2
3	Modeling quark contribution with Neural Network	4
4	Results	5
5	Conclusions & Future work	7
6	Acknowledgements	7
	References	7

1 Introduction

Transverse Momentum Dependent Parton Distribution Functions (TMD PDFs) can be extracted from the processes that are corresponding to multiple kinematic scales such as Drell-Yan (DY), Semi Inclusive Deep Inelastic Scattering (SIDIS) and $e^+ e^-$ annihilation. Therefore the cross-sections (or differential cross-sections) measured from these processes are sensitive to the transverse momentum of partons, especially the magnitude of that momentum corresponding

to non-negligible non-perturbative interactions. The original proposal for TMD PDFs was introduced by Collins, Soper and Sterman [1–3]. PDFs provide $f(x)$ the parton density in-terms of light-cone momentum fraction (x), whereas TMD PDFs provide $f(x, \mathbf{k}_\perp)$ the parton density as a function of both light-cone momentum fraction and transverse momentum. There are eight TMD PDFs at the leading-twist, or in other words twist-2 approximation: $\mathcal{O}(1/Q^2)$, which can be classified in terms of quark-polarization and nucleon-polarization (see Figure (1)). Among those eight TMD PDFs, there are two time-reversal odd TMDs, namely Sivers function & Boer-Mulders function, which represent the correlation between the spin of the quark and the spin of the hadron. The Sivers function is corresponding to the polarized hadron, and the Boer-Mulders function corresponds to unpolarized hadron.

		Quark Polarization		
		U	L	T
Nucleon Polarization	U	$f_1 = \odot$	N/A	$h_1^\perp = \odot - \ominus$ Boer-Mulders
	L	N/A	$g_{1L} = \odot - \ominus$ Helicity	$h_{1L}^\perp = \odot - \ominus$
	T	$f_{1T}^\perp = \odot - \ominus$ Sivers	$g_{1T}^\perp = \odot - \ominus$	$h_T = \odot - \ominus$ $h_{1T}^\perp = \odot - \ominus$ Transversity

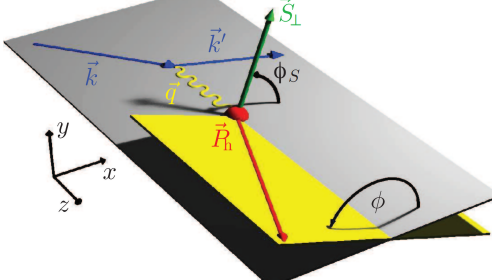


Figure 1: Left: Leading twist TMDs categorized according to the polarization of the quarks and the nucleons. Right: Semi-inclusive hadron production in DIS processes [4]

Sivers [5, 6] suggested that the k_\perp distribution could have an azimuthal asymmetry when the initial hadron is transversely polarized, but this is in contradiction only with "Parity" and "Time-reversal" invariance (PT) of QCD. In other words, this asymmetry doesn't exist according to the PT invariance of QCD. The Sivers function is the correlation between unpolarized quarks in a transversely polarized nucleon. It vanishes by its naive definition [7].

2 Sivers asymmetry from SIDIS

In Semi Inclusive Deep Inelastic Scattering (SIDIS) process, the differential cross-section depends on both collinear parton distribution functions $f_{q/p}(x)$ and fragmentation functions $D_{h/q}(z)$, where q is the quark flavor, p represents the target proton, h is the hadron type produced by the process and z is the momentum fraction of the final state hadron with respect to the virtual photon. A simplified version of the SIDIS differential cross-section can be written as,

$$\frac{d^5 \sigma^{lp \rightarrow lhX}}{dx dQ^2 dz d^2 p_{hT}} \propto \sum_q e_q^2 \int d^2 \mathbf{k}_\perp \mathcal{K}(x, p_{hT}, Q^2) \hat{f}_{q/p^\dagger}(x, \mathbf{k}_\perp) D_{h/q}(z, p_\perp) + \mathcal{O}(\mathbf{k}_\perp/Q), \quad (1)$$

where $\mathcal{K}(x, p_{hT}, Q^2)$ represents the factorized kinematical factor. $\hat{f}_q(x, \mathbf{k}_\perp)$ is the unpolarized quark distribution with transverse momentum \mathbf{k}_\perp inside a transversely polarized (with spin \mathbf{S}) proton with 3-momentum:

$$\hat{f}_{q/p^\dagger}(x, \mathbf{k}_\perp) = f_{q/p}(x, k_\perp) + \frac{1}{2} \Delta^N f_{q/p^\dagger}(x, k_\perp) \mathbf{S} \cdot (\hat{\mathbf{p}} \times \hat{\mathbf{k}}_\perp) \quad (2)$$

and $\Delta^N f_{q/p\uparrow}(x, k_\perp)$ is the Sivers function which contains the effect on quarks due to the spin-polarization of the proton. The Sivers asymmetry in SIDIS process (see Fig.[1]) can be written in terms of the cross-sections as,

$$A_{UT}^{\sin(\phi_h - \phi_S)}(x, y, z, p_{hT}) = \frac{d\sigma^{\uparrow p \rightarrow h l X} - d\sigma^{\downarrow p \rightarrow h l X}}{d\sigma^{\uparrow p \rightarrow h l X} + d\sigma^{\downarrow p \rightarrow h l X}} \equiv \frac{d\sigma^{\uparrow} - d\sigma^{\downarrow}}{d\sigma^{\uparrow} + d\sigma^{\downarrow}}, \quad (3)$$

which can be parameterized as [8],

$$A_{UT}^{\sin(\phi_h - \phi_S)}(x, y, z, p_{hT}) = \frac{[z^2 \langle k_\perp^2 \rangle + \langle p_\perp^2 \rangle] \langle k_S^2 \rangle^2}{[z^2 \langle k_S^2 \rangle + \langle p_\perp^2 \rangle] \langle k_\perp^2 \rangle^2} \exp \left[-\frac{p_{hT}^2 z^2 (\langle k_S^2 \rangle - \langle k_\perp^2 \rangle)}{(z^2 \langle k_S^2 \rangle + \langle p_\perp^2 \rangle) (z^2 \langle k_\perp^2 \rangle + \langle p_\perp^2 \rangle)} \right] \\ \times \frac{\sqrt{2e} z p_{hT}}{M_1} \frac{\sum_q \mathcal{N}_q e_q^2 f_q(x) D_{h/q}(z)}{\sum_q e_q^2 f_q(x) D_{h/q}(z)}, \quad (4)$$

where, ϕ_S, ϕ_h are azimuthal angles of the final state hadron and the transverse polarization vector of the nucleon with respect to the lepton plane; and P_{hT} is the transverse momentum of the final state hadron with respect to the virtual photon in the center-of-mass of the virtual photon and the nucleon. The TMD Fragmentation Functions are parameterized as,

$$D_{h/q}(z, p_\perp) = D_{h/q}(z) \frac{1}{\pi \langle p_\perp^2 \rangle} e^{-p_\perp^2 / \langle p_\perp^2 \rangle} \quad (5)$$

where $D_{h/q}(z)$ is the fragmentation function for a quark with flavor q in a hadron type h . $\langle k_S^2 \rangle = \frac{M_1^2 \langle k_\perp^2 \rangle}{M_1^2 + \langle k_\perp^2 \rangle}$; and $\langle k_\perp^2 \rangle, \langle p_\perp^2 \rangle$ were fixed to $0.57 \pm 0.08 \text{ GeV}^2$, and $0.12 \pm 0.01 \text{ GeV}^2$ as in [8] by fitting to the multiplicities from HERMES data. Assuming the Gaussian factorized form [8, 9], the unpolarized TMDs and the Sivers function can be parameterized as,

$$f_{q/p}(x, k_\perp) = f_q(x) \frac{1}{\pi \langle k_\perp^2 \rangle} e^{-k_\perp^2 / \langle k_\perp^2 \rangle}, \quad (6)$$

$$\Delta^N f_{q/p\uparrow} = 2 \mathcal{N}_q(x) h(k_\perp) f_{q/p}(x, k_\perp), \quad (7)$$

where,

$$\mathcal{N} = N_q x^{\alpha_q} (1-x)^{\beta_q} \frac{(\alpha_q + \beta_q)^{(\alpha_q + \beta_q)}}{\alpha_q^{\alpha_q} \beta_q^{\beta_q}}, \quad (8)$$

$$h(k_\perp) = \sqrt{2e} \frac{k_\perp}{M_1} e^{-k_\perp^2 / M_1^2} \quad (9)$$

Therefore, one can simplify $A_{UT}^{\sin(\phi_h - \phi_S)}(x, y, z, p_{hT})$ as follows,

$$A_{UT}^{\sin(\phi_h - \phi_S)}(x, y, z, p_{hT}) = \mathcal{A}_0(z, p_{hT}, M_1) \left(\frac{\sum_q \mathcal{N}_q(x) e_q^2 f_q(x) D_{h/q}(z)}{\sum_q e_q^2 f_q(x) D_{h/q}(z)} \right) \quad (10)$$

where,

$$\mathcal{A}_0(z, p_{hT}, M_1) = \frac{[z^2 \langle k_\perp^2 \rangle + \langle p_\perp^2 \rangle] \langle k_S^2 \rangle^2}{[z^2 \langle k_S^2 \rangle + \langle p_\perp^2 \rangle] \langle k_\perp^2 \rangle^2} \exp \left[-\frac{p_{hT}^2 z^2 (\langle k_S^2 \rangle - \langle k_\perp^2 \rangle)}{(z^2 \langle k_S^2 \rangle + \langle p_\perp^2 \rangle) (z^2 \langle k_\perp^2 \rangle + \langle p_\perp^2 \rangle)} \right] \times \frac{\sqrt{2e} z p_{hT}}{M_1}. \quad (11)$$

$f_q(x)$ is the co-linear parton distribution function for flavor q that was obtained from CTEQ6l LHAPDF [10], whereas the fragmentation functions for $\pi^{\pm,0}, K^{\pm}$ are also extracted from NNFF10_nlo grids which are also available on LHAPDF [11]. There are 13 fitting parameters: $M_1, N_q, \alpha_q, \beta_q, N_{\bar{q}}$, where $q = u, d, s$ and $\bar{q} = \bar{u}, \bar{d}, \bar{s}$; and the fitting routine is *iminuit* (python version of MINUIT) [12]. Two main differences of this work compare to [8] are: (1) LHAPDF grids for FFs (NNFF10_nlo) were used instead of the DSS implementation, (2) s and \bar{s} quark-flavors were considered. Siverson asymmetries data on the SIDIS process, from HERMES (2009) [13] and (2020) [14] were used in this analysis, with the plan of extending the effort towards including all available data from different experiments. Furthermore, a step-forward has been taken to remove the model dependence behavior of $\mathcal{N}_q(x)$ using Neural Network approach.

3 Modeling quark contribution with Neural Network

The lack of a satisfactory formulation for the quark contribution leads us to desire an unbiased, trainable model for this aspect of the Siverson asymmetry equation. Thus, in this work $N_q(x)$ is being considered in a model-independent fashion. Neural networks are known to be able to adapt any arbitrary function through the universal approximation theorem [15], and thus are ideal for this application. In this study, we used multilayer feed-forward neural network models to approximate the quark contribution.

These in general operate by receiving inputs to the network, in this case the kinematic variable x . These variables and a trainable matrix of "weights" are convoluted to comprise a hidden layer. To enable the network to approximate non-linear functions, a non-linear activation is applied to the outputs of this intermediate layer. Then these outputs are passed to the next hidden layer, and the process is repeated for an arbitrary number of layers. For the final step of this "forward pass," the outputs of the penultimate layer are passed to the output layer, and the estimate for the target value is obtained. No activation function is applied to the final layer because this is a regression problem.

In training the network, the "backward pass" is used to update the weights of the network with a loss function, which is a measure of how well the network fits the data. The partial derivative of the loss function with respect to each weight in the network is computed, then the weights are adjusted to reduce the magnitude of the loss function. In this problem we have no direct experimental values for the quark contribution at different values of x . Thus, we propagate the outputs of the network through a computational graph (displayed in fig. 2) that computes the entire Siverson function. Then, the weights for the neural network for each quark flavor are updated using the experimental observations of Siverson asymmetries in different kinematic ranges.

The inputs of the computational graph are x, z , and p_{hT} . The PDFs and FFs are generated for the corresponding kinematic values, using LHAPDF outside the computational graph. They are then taken as inputs to the graph along with the kinematics. Specifically, $e_q^2 f_q(x) D_{h/q}(z)$ is calculated for each kinematic setting and fed as an input to the computational graph. It is necessary to calculate these expressions independently of the graph because neither the PDFs nor the FFs as taken directly from LHAPDF are automatically differentiable with TensorFlow. These inputs are then passed through the Siverson function as usual, except the neural networks which model the quark contribution for each flavor. These neural networks are each comprised of two dense layers with 32 nodes and ReLU activations. There is a separate network for each

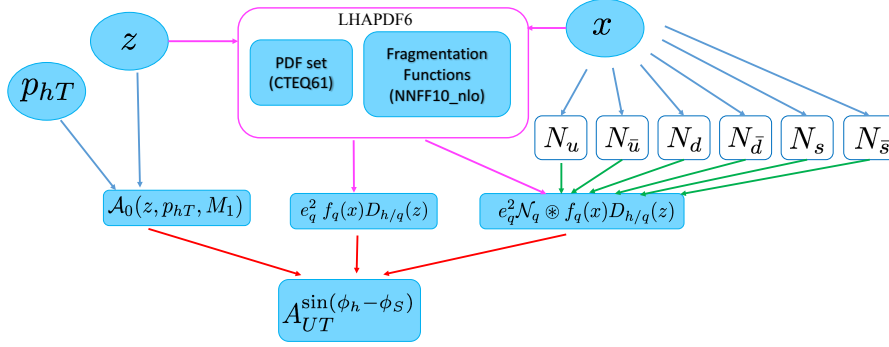


Figure 2: Entire TensorFlow computational graph with kinematics as inputs and Siverts asymmetry as output. Each N_q is a neural network model.

quark flavor.

4 Results

The fits to the kinematic sets have been performed using *iminuit* (see Table [1]). The neural net has been trained using the HERMES2009 data set. The asymmetry plots HERMES2020 for the NN are predictions which have been compared with the real data. Table [2] summarizes the χ^2/dof 's to compare how well the Siverts asymmetries (with respect to x, z, P_{hT}) are described by *iminuit* fits as well as by the Neural Network.

Parameter	HERMES 2009	HERMES2020
M_1	1.303 ± 0.010	7.590 ± 0.008
N_u	0.169 ± 0.002	0.960 ± 0.084
α_u	0.645 ± 0.125	2.291 ± 0.200
β_u	3.122 ± 2.661	9.826 ± 1.556
$N_{\bar{u}}$	0.007 ± 0.003	0.205 ± 0.02
N_d	-0.434 ± 0.005	-4.713 ± 0.004
α_d	1.777 ± 0.909	0.482 ± 0.866
β_d	7.788 ± 2.144	$(5.675 \pm 6.45) \times 10^{-6}$
$N_{\bar{d}}$	-0.142 ± 0.048	1.490 ± 0.05
N_s	0.563 ± 0.073	4.528 ± 0.073
α_s	$(6.84 \pm 10.00) \times 10^{-5}$	$(1.745 \pm 9.20) \times 10^{-5}$
β_s	$(5.987 \pm 8.77) \times 10^{-10}$	$(6.082 \pm 9.55) \times 10^{-10}$
$N_{\bar{s}}$	-0.122 ± 0.504	8.692 ± 0.46

Table 1: Individual fit results with HERMES2009 & HERMES2020 data

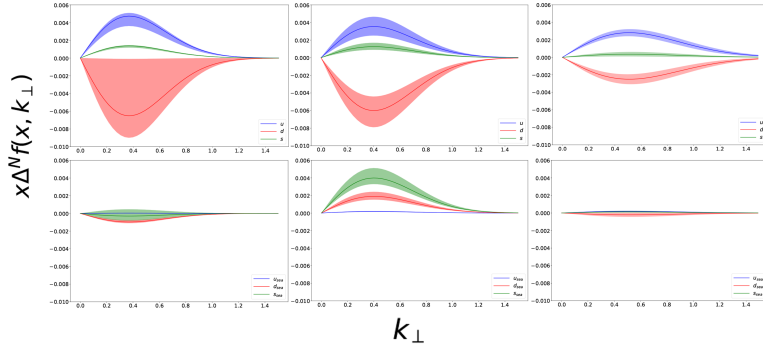


Figure 3: The extracted Sivers functions (at $Q^2 = 2.4 \text{ GeV}^2$) for the valence & sea quarks in the case of $SU(3)_{flavor}$ by *iminuit* fits (first two columns: for HERMES2009 & HERMES2020 accordingly, and the third column: Neural Net fit to HERMES2009 data).

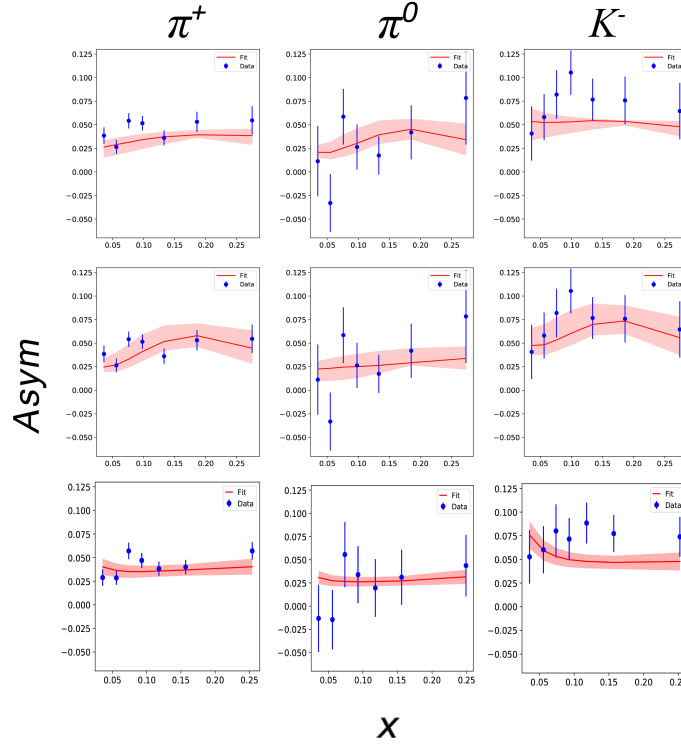


Figure 4: Sivers asymmetry fit results (at $Q^2 = 2.4 \text{ GeV}^2$) of π^+ , π^0 , K^+ (columns) for HERMES2009 (first row), HERMES2020 (second row), and the projected asymmetry values for HERMES2020 kinematics from the Neural Net model trained on HERMES2009 data (third row).

Hadron	Dependence	HERMES2009			HERMES2020		
		ndata	$\chi^2/ndata$	$\chi^2/ndata(NN)$	ndata	$\chi^2/ndata$	$\chi^2/ndata(NN)$
π^+	x	7	2.53	2.29	8	2.12	2.23
π^+	z	7	1.02	1.01	11	1.49	1.63
π^+	p_{hT}	7	5.23	3.40	8	1.14	2.07
π^-	x	7	1.94	3.13	8	1.81	2.82
π^-	z	7	2.45	0.52	11	1.16	0.57
π^-	p_{hT}	7	1.61	1.96	8	1.20	1.44
π^0	x	7	0.85	0.90	8	0.40	0.50
π^0	z	7	1.11	1.13	11	0.95	0.97
π^0	p_{hT}	7	2.00	1.61	8	0.50	0.73
K^+	x	7	1.22	1.78	8	0.48	1.45
K^+	z	7	2.97	3.69	11	6.31	7.99
K^+	p_{hT}	7	2.65	1.29	8	1.26	2.45
K^-	x	7	0.49	0.52	8	0.26	0.54
K^-	z	7	0.52	0.57	10	0.93	1.11
K^-	p_{hT}	7	0.96	0.73	8	0.79	2.93
Total		105	1.84	1.64	134	1.477	2.02

Table 2: Fit results ($\chi^2/ndata$ values) for HERMES2009 and HERMES2020

5 Conclusions & Future work

The fit results to HERMES2009 and HERMES2020 data using *iminuit* & neural net model using HERMES2009 data are consistent. It was observed that, the inclusion of the strange quark contribution not only facilitates the fits, but also describes a consistent behavior of the Sivers function. Neural net model's Sivers asymmetry predictions for HERMES2020 kinematics also observed to be consistent with the actual data. It is important to note that the HERMES2020 results from the neural network serve as a test set, as the model was trained only on HERMES2009 data. Such results could indicate over-fitting the HERMES2009 data which could be resolved in future work by incorporating further data sets. Performing the global fits with HERMES, COMPASS (SIDIS data) are currently ongoing, and will be published. The results indicate that the neural network representation of the quark contribution offers a promising alternative approach towards model independent nature, and could provide a path toward reducing uncertainties in the Sivers functions because there is a clear need for data and constraining using Drell-Yan process, and also for both Sivers and Boer-Mlders functions.

6 Acknowledgements

This work was supported by the Department of Energy (DOE), United States of America contract DE-FG02-96ER40950.

References

- [1] J. C. Collins and D. E. Soper, *Back-to-back jets in qcd*, Nuclear Physics B **193**(2), 381 (1981), doi:[https://doi.org/10.1016/0550-3213\(81\)90339-4](https://doi.org/10.1016/0550-3213(81)90339-4).
- [2] J. C. Collins and D. E. Soper, *Back-to-back jets: Fourier transform from b to kt*, Nuclear Physics B **197**(3), 446 (1982), doi:[https://doi.org/10.1016/0550-3213\(82\)90453-9](https://doi.org/10.1016/0550-3213(82)90453-9).

- [3] J. Collins, D. E. Soper and G. Sterman, *Transverse momentum distribution in drell-yan pair and w and z boson production*, Nuclear Physics B **250**(1), 199 (1985), doi:[https://doi.org/10.1016/0550-3213\(85\)90479-1](https://doi.org/10.1016/0550-3213(85)90479-1).
- [4] A. A. et al., *Electron ion collider: The next qcd frontier - understanding the glue that binds us all*, The European Physical Journal A **52**(9), 268 (2016).
- [5] D. Sivers, *Single-spin production asymmetries from the hard scattering of pointlike constituents*, Phys. Rev. D **41**, 83 (1990), doi:[10.1103/PhysRevD.41.83](https://doi.org/10.1103/PhysRevD.41.83).
- [6] D. Sivers, *Hard-scattering scaling laws for single-spin production asymmetries*, Phys. Rev. D **43**, 261 (1991), doi:[10.1103/PhysRevD.43.261](https://doi.org/10.1103/PhysRevD.43.261).
- [7] J. Collins, *Fragmentation of transversely polarized quarks probed in transverse momentum distributions*, Nuclear Physics B **396**(1), 161–182 (1993), doi:[10.1016/0550-3213\(93\)90262-n](https://doi.org/10.1016/0550-3213(93)90262-n).
- [8] M. Anselmino, M. Boglione, U. D’Alesio, F. Murgia and A. Prokudin, *Study of the sign change of the sivers function from star collaboration w/z production data*, Journal of High Energy Physics **2017**(4), 46 (2017), doi:[10.1007/JHEP04\(2017\)046](https://doi.org/10.1007/JHEP04(2017)046).
- [9] M. Anselmino, M. Boglione, U. D’Alesio, A. Kotzinian, S. Melis, F. Murgia, A. Prokudin and C. Türk, *Sivers effect for pion and kaon production in semi-inclusive deep inelastic scattering*, The European Physical Journal A **39**(1), 89–100 (2009), doi:[10.1140/epja/i2008-10697-y](https://doi.org/10.1140/epja/i2008-10697-y).
- [10] A. Buckley, J. Ferrando, S. Lloyd, K. Nordström, B. Page, M. Rüfenacht, M. Schönherr and G. Watt, *Lhapdf6: parton density access in the lhc precision era*, The European Physical Journal C **75**(3) (2015), doi:[10.1140/epjc/s10052-015-3318-8](https://doi.org/10.1140/epjc/s10052-015-3318-8).
- [11] V. B. et al, *A determination of the fragmentation functions of pions, kaons, and protons with faithful uncertainties*, The European Physical Journal C **77**, 516 (2017), doi:[10.1140/epjc/s10052-017-5088-y](https://doi.org/10.1140/epjc/s10052-017-5088-y).
- [12] P. O. et al., *iminuit - minuit from python: <https://github.com/iminuit/iminuit>* (2012).
- [13] A. Airapetian, N. Akopov, Z. Akopov, E. C. Aschenauer, W. Augustyniak, A. Avetissian, E. Avetisyan, A. Bacchetta, B. Ball, N. Bianchi and et al., *Observation of the naive-odd sivers effect in deep-inelastic scattering*, Physical Review Letters **103**(15) (2009), doi:[10.1103/physrevlett.103.152002](https://doi.org/10.1103/physrevlett.103.152002).
- [14] A. Airapetian, N. Akopov, Z. Akopov, E. C. Aschenauer, W. Augustyniak, R. Avakian, A. Bacchetta, S. Belostotski, V. Bryzgalov, et al. and T. H. Collaboration, *Azimuthal single- and double-spin asymmetries in semi-inclusive deep-inelastic lepton scattering by transversely polarized protons*, Journal of High Energy Physics **2020**(12), 10 (2020), doi:[10.1007/JHEP12\(2020\)010](https://doi.org/10.1007/JHEP12(2020)010).
- [15] G. Cybenko, *Approximation by superpositions of a sigmoidal function*, Math. Control Signals Systems **2**, 303 (1989), doi:<https://doi.org/10.1007/BF02551274>.