

Energy magnetization and transport in systems with a non-zero Berry curvature in a magnetic field

Archisman Panigrahi¹ and Subroto Mukerjee¹

¹*Dept. of Physics, Indian Institute of Science, Bangalore 560012, India*

(Dated: April 28, 2022)

We demonstrate that the well-known expression for the charge magnetization of a sample with a non-zero Berry curvature can be obtained by demanding that the Einstein relation holds for the electric transport current. We extend this formalism to the transport energy current and show that the energy magnetization must satisfy a particular condition. We provide a physical interpretation of this condition and relate the energy magnetization to circulating energy currents due to chiral edge states. We further obtain an expression for the energy magnetization analogous to the one previously obtained for the charge magnetization. We also solve the Boltzmann Transport Equation for the non-equilibrium distribution function in 2D for systems with a non-zero Berry curvature in a magnetic field. This distribution function can be used to obtain the regular Hall response in time-reversal invariant samples with a non-zero Berry curvature, for which there is no anomalous Hall response.

I. INTRODUCTION

The effect of the Berry curvature on thermoelectric transport in crystals has received a lot of attention in recent years. Following the seminal work of Berry on the adiabatic evolution of quantum states¹, it was realized that the geometric phase identified by him has important consequences for the semiclassical dynamics of electron wavepackets in crystals. In particular, the Berry curvature associated with this phase contributes an anomalous term to the velocity of the wavepacket²⁻⁷. This anomalous velocity can give rise to a Hall response without an external magnetic field, resulting in the anomalous Hall effect⁸, the Magnus Hall Effect⁹⁻¹¹, as well as many other interesting electronic transport phenomena¹². Similarly, in response to a temperature gradient, without any external magnetic field, it generate a transverse Hall voltage, known as the anomalous Nernst effect^{9,13-15}. Coupled with the Boltzmann transport theory, the modified semiclassical equations have been employed to study transport in topological insulators^{16,17}, Chern Insulators¹⁸, Weyl Semi-Metals^{14,15,19-25}, Kondo Insulators²⁶, Rashba systems^{27,28}, triple-component Fermionic systems²⁹, optical lattices and quasicrystals^{30,31}, superconductors³², non-Hermitian systems^{33,34}, as well as in various other systems³⁵⁻⁴¹. Non-linear effects in transport have also been studied within this formalism⁴²⁻⁵¹.

In the linear response regime of thermoelectric transport, the electric current and heat current are given by the expressions,

$$\begin{aligned} \mathbf{j}^e &= \overleftrightarrow{L}_{11} \cdot \left(\mathbf{E} + \frac{\nabla\mu}{e} \right) + \overleftrightarrow{L}_{12} \cdot (-\nabla T) \\ \mathbf{j}^Q &= \overleftrightarrow{L}_{21} \cdot \left(\mathbf{E} + \frac{\nabla\mu}{e} \right) + \overleftrightarrow{L}_{22} \cdot (-\nabla T), \end{aligned} \quad (1)$$

where the heat current \mathbf{j}^Q is related to the energy current \mathbf{j}^E and the number density current \mathbf{j}^N by the relation $\mathbf{j}^Q = \mathbf{j}^E - \mu\mathbf{j}^N$ ⁵², μ being the chemical potential, and

the electric current \mathbf{j}^e is related to the number density current \mathbf{j}^N by the relation⁵³ $\mathbf{j}^e = -e\mathbf{j}^N$. Here $\overleftrightarrow{L}_{11}$ is the electric conductivity tensor, $\overleftrightarrow{L}_{22}$, the thermal conductivity tensor⁵⁴, and $\overleftrightarrow{L}_{12}$ and $\overleftrightarrow{L}_{21}$ are the Peltier conductivity coefficients. The coefficients $\overleftrightarrow{L}_{12}$ and $\overleftrightarrow{L}_{21}$ are related via the Onsager relation⁵⁵⁻⁵⁷,

$$\overleftrightarrow{L}_{21} = T \overleftrightarrow{L}_{12}. \quad (2)$$

It is important to note that the Onsager relation holds only for the coefficients that relate *transport* currents to the applied gradients and not the *total* currents. The total currents for systems with broken time reversal symmetry typically have diamagnetic contributions, which need to be subtracted in order to obtain the transport currents⁵⁷. This has been explicitly demonstrated for systems with a non-zero Berry curvature^{12,58}.

An additional set of relations are the Einstein relations which require the transport currents generated by an electric field \mathbf{E} to be equal to those due to a chemical potential gradient $\nabla\mu$ of strength $e\mathbf{E}$ ^{57,58}. It is well known that the bound electric current in a magnetic sample can be expressed as the curl of the charge magnetization⁵⁹. Similarly, there can be circulating energy currents in a sample, which can be expressed as the curl of a quantity called the energy magnetization⁵⁷. It has been demonstrated that the Einstein relation holds for the electric, heat, and energy currents in systems with a non-zero Berry curvature^{58,60}, by employing various interesting techniques like introduction of a fictitious inhomogeneous disorder field. However, as shown by Onsager^{55,56}, the Einstein relation should always hold due to the principle of detailed balance, and should not depend on the microscopic details of the sample. In this paper, we show that assuming the Einstein relation holds, one can conveniently find the forms of the charge magnetization and the energy magnetization, without introducing an inhomogeneous disorder field, as was done in⁶⁰. Here we show that the energy magnetization has to satisfy a certain

specific condition, and provide an interpretation of this condition for a Chern insulator in terms of the number of chiral edge modes.

As will be shown in section IV, the transport currents contain pieces which depend on the equilibrium and the non-equilibrium distribution functions. The equilibrium distribution function (Fermi function) contributes to the intrinsic anomalous Hall and Nernst responses, which occur without any external magnetic field, for a system with non-zero Berry curvature. The non-equilibrium distribution function, which is calculated in section IV up to leading order in the external potential and temperature gradients for a two-dimensional system, is responsible for the regular Hall and Nernst responses and captures the effects of Berry curvature on these. Similar expressions for the non-equilibrium part of the distribution were obtained in several papers^{21,61,62}, but only in the context of chiral magnetic effects, which are absent in two dimensions. When the Berry curvature $\mathbf{\Omega} = 0$, the non-equilibrium parts of the distributions obtained in the above-mentioned papers only lead to regular Ohmic transport, but not the regular Hall effect. Neglecting parts of the non-equilibrium distribution function is justified for systems like Weyl semimetals, where the anomalous Hall effect is much stronger than the regular Hall effect. However, there are systems (e.g., bilayer graphene) with non-zero Berry curvature, which do not show the anomalous Hall effect due to intrinsic time reversal symmetry. In such samples, the Berry curvature modifies the regular Hall effect, which can be calculated with the solution (Eq. (18)) of the Boltzmann Transport Equation obtained in this paper.

There are two main results of this paper. The first, obtained through the calculations of sections II-III, is a derivation of the charge and energy magnetization assuming the validity of the Einstein relation, and the interpretation of a condition on the energy magnetization. The second result, obtained in section IV, is a complete solution of the Boltzmann Transport Equation in two-dimensions in the linear response regime, which can be used to calculate transport currents for a two-dimensional system with a non-zero Berry curvature and in the presence of a magnetic field.

The paper is organized as follows: We describe the overall formalism of calculating currents from the semiclassical equations in section II, and further discuss how the orbital magnetization affects the electric and energy currents. While the effects of orbital magnetization on these currents have been addressed in the literature before^{43,58}, we emphasize some of the salient aspects of the physics which are important for us to derive the central results of our paper described in Secs. III B and IV. We first illustrate how the validity of the Einstein relation for the charge and energy currents can be exploited to obtain expressions for the charge and energy magnetizations. While the expressions for these magnetizations have been obtained from microscopics recently^{60,63}, our approach has the virtue of simplicity. Our focus is the en-

ergy magnetization but as a warm-up, we first employ our method in section III A, to obtain the known expression for the more commonly studied, charge magnetization. Section III B contains one of the two central results of this paper. Here we employ the same method as for the charge magnetization to find a condition that the energy magnetization has to obey, which has a physical intuitive interpretation. We then use it to find the expression of the energy magnetization. In section IV, we derive the complete expressions for the transport heat current density, and solve the Boltzmann transport equation for the electron distribution function up to linear order in the potential and temperature gradient in the presence of a magnetic field and non-zero Berry curvature. As mentioned above, the distribution function can be used to obtain the regular Hall and Nernst responses.

II. FORMALISM

The semiclassical equations of motion for the position and crystal momentum of a Bloch wavepacket are^{64,3,4,7},

$$\begin{aligned}\dot{\mathbf{r}} &= \frac{1}{\hbar} \frac{\partial \varepsilon_{\mathbf{k}}}{\partial \mathbf{k}} - \dot{\mathbf{k}} \times \mathbf{\Omega}(\mathbf{k}) \\ \hbar \dot{\mathbf{k}} &= -e(\mathbf{E} + \dot{\mathbf{r}} \times \mathbf{B})\end{aligned}\quad (3)$$

Here, $\mathbf{\Omega}(\mathbf{k}) = i \langle \nabla_{\mathbf{k}} u_{n,\mathbf{k}} | \times | \nabla_{\mathbf{k}} u_{n,\mathbf{k}} \rangle$ is the Berry curvature in the reciprocal space, and $u_{n,\mathbf{k}}$ is the periodic part of the Bloch wavefunction. The energy eigenvalues are modified due to the orbital magnetic moment⁵⁸ $\mathbf{m}_{\mathbf{k}}$ of an wavepacket, $\varepsilon_{\mathbf{k}} = \varepsilon_0(\mathbf{k}) - \mathbf{m}_{\mathbf{k}} \cdot \mathbf{B}$, where $\varepsilon_0(\mathbf{k})$ is the original band structure energy at zero magnetic field.

It has been shown that the equations of motion (Eq. (3)) violate Liouville's theorem, and for a phase space volume element ΔV , the quantity $\Delta V (1 + \frac{e}{\hbar} \mathbf{B} \cdot \mathbf{\Omega}(\mathbf{k}))$ remains a constant of motion⁶⁵. As a result, the calculation of the expectation value of any operator \hat{O} over all states requires the introduction of an additional factor of $(1 + \frac{e}{\hbar} \mathbf{B} \cdot \mathbf{\Omega}(\mathbf{k}))$ in the integrand.

$$\langle \hat{O} \rangle = 2 \int \frac{d\mathbf{k}}{(2\pi)^d} \left(1 + \frac{e}{\hbar} \mathbf{B} \cdot \mathbf{\Omega}(\mathbf{k})\right) \langle \hat{O} \rangle_{\mathbf{k}} \tilde{f}_{\mathbf{k}} \quad (4)$$

The factor of 2 is for the spin degeneracy⁶⁶. Here, $\tilde{f}_{\mathbf{k}}$ is the distribution function and in thermodynamic equilibrium, it reduces to the Fermi distribution function, $f_{\mathbf{k}} = \frac{1}{e^{\beta(\varepsilon_{\mathbf{k}} - \mu)} + 1}$. When an external electromagnetic field, chemical potential gradient or temperature gradient is applied, the distribution function is modified to $\tilde{f}_{\mathbf{k}} = f_{\mathbf{k}} + g_{\mathbf{k}}$, where $g_{\mathbf{k}}$ is the non-equilibrium contribution. We calculate $g_{\mathbf{k}}$ for a two dimensional system within the Boltzmann transport formalism in Section IV. Up to linear order in the external fields, $g_{\mathbf{k}}$ contributes to regular Ohmic conduction, the regular Hall effect, and the regular Nernst effect. In the presence of a non-zero Berry curvature, the equilibrium part of the distribution contributes to the anomalous Hall effect and the anomalous

Nernst effect, up to linear order in the external electric field, temperature gradient, and chemical potential gradient.

Let us briefly review the calculation of the orbital magnetic moment of a Bloch wavepacket, which is responsible for the circulating magnetization energy currents and electric currents. While a Bloch wavepacket^{4,7} is localized at a point (say, \mathbf{r}_0), the electron is not necessarily localized there, and can have an angular momentum due to the motion about the center of the wavepacket, giving rise to an orbital magnetic moment given by the expression^{58,67-69},

$$\mathbf{m}_{\mathbf{k}} = -\frac{e}{2m} \langle \psi_{\mathbf{k},\mathbf{r}_0} | (\hat{\mathbf{r}} - \mathbf{r}_0) \times \hat{\mathbf{p}} | \psi_{\mathbf{k},\mathbf{r}_0} \rangle. \quad (5)$$

Note that m is the bare electron mass, not the effective mass of the Bloch state.

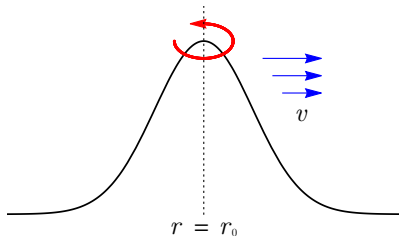


FIG. 1. In addition to its velocity, a Bloch wavepacket can have an angular momentum about its center, which gives rise to an orbital magnetic moment.

Since the Bloch wavepacket is not completely localized, the wavepacket centered at one point, can contribute to the currents at another point, and the orbital magnetic moment is involved in these part of the electric and energy currents. In the absence of an external magnetic field⁷⁰, the *total* electric current density^{12,40} and energy current density^{58,60} are given by⁷¹,

$$\mathbf{j}_{\text{total}}^e |_{\mathbf{B}=0} = -e \int \frac{2d\mathbf{k}}{(2\pi)^d} \left[g_{\mathbf{k}} \frac{1}{\hbar} \frac{\partial \varepsilon_0(\mathbf{k})}{\partial \mathbf{k}} + f_{\mathbf{k}} \frac{e}{\hbar} (\mathbf{E} \times \boldsymbol{\Omega}(\mathbf{k})) \right] + \nabla \times \int \frac{2d\mathbf{k}}{(2\pi)^d} f_{\mathbf{k}} \mathbf{m}_{\mathbf{k}} \quad (6a)$$

$$\mathbf{j}_{\text{total}}^E |_{\mathbf{B}=0} = \int \frac{2d\mathbf{k}}{(2\pi)^d} \varepsilon_0(\mathbf{k}) \left[g_{\mathbf{k}} \frac{1}{\hbar} \frac{\partial \varepsilon_0(\mathbf{k})}{\partial \mathbf{k}} + \frac{e}{\hbar} f_{\mathbf{k}} (\mathbf{E} \times \boldsymbol{\Omega}(\mathbf{k})) \right] - \mathbf{E} \times \int \frac{2d\mathbf{k}}{(2\pi)^d} f_{\mathbf{k}} \mathbf{m}_{\mathbf{k}} + \nabla \times \int \frac{2d\mathbf{k}}{(2\pi)^d} f_{\mathbf{k}} \varepsilon_0(\mathbf{k}) \left(\frac{\mathbf{m}_{\mathbf{k}}}{-e} \right) \quad (6b)$$

In both Equations (6a) and (6b), the terms in the first lines, those does not involve the energy magnetization $\mathbf{m}_{\mathbf{k}}$ can be considered as the contribution due to the

movement of the center of the Bloch wavepacket, while the other terms are the contribution of the movement of the electron about the center of the wavepacket.

III. OBTAINING THE EXPRESSION FOR CHARGE AND ENERGY MAGNETIZATIONS FROM THE EINSTEIN RELATION OF THE TRANSPORT CURRENTS

A. Obtaining the expression for charge magnetization from the Einstein relation of the electric current

In this section we demonstrate that the known expression of the charge magnetization can be recovered by demanding that the Einstein relation holds for the electric transport current. The electric transport current can be obtained by subtracting the charge magnetization current from the total electric current. The magnetization electric current is the curl of the charge magnetization, whose expression has been obtained in Ref.⁵⁸. Here we show that the same expression of the charge magnetization can be obtained by demanding that the Einstein relation holds for the electric transport current. In the next section, we will employ the same strategy to find the expression for the energy magnetization (whose curl is the bound energy current). The expression for the electric magnetization current is,

$$\mathbf{j}_M^e = \nabla \times \mathbf{M}^e = \nabla \mu \times \frac{\partial \mathbf{M}^e}{\partial \mu} + \nabla T \times \frac{\partial \mathbf{M}^e}{\partial T}.$$

Consequently, we can calculate the transport current $\mathbf{j}_{\text{transport}}^e = \mathbf{j}_{\text{total}}^e - \mathbf{j}_M^e$, and demanding that the terms can only depend on the combination $(e\mathbf{E} + \nabla\mu)$, we get the condition (see Appendix E),

$$\frac{\partial \mathbf{M}^e}{\partial \mu} = \int \frac{2d\mathbf{k}}{(2\pi)^d} \left[\frac{\partial f_{\mathbf{k}}}{\partial \mu} \mathbf{m}_{\mathbf{k}} + f_{\mathbf{k}} \frac{e}{\hbar} \boldsymbol{\Omega}(\mathbf{k}) \right]. \quad (7)$$

After integrating and applying appropriate boundary conditions⁷², we get,

$$\mathbf{M}^e = \int \frac{2d\mathbf{k}}{(2\pi)^d} \left[\mathbf{m}(\mathbf{k}) f_{\mathbf{k}} + k_B T \frac{e\boldsymbol{\Omega}}{\hbar} \log \left(1 + e^{-\beta(\varepsilon_0(\mathbf{k}) - \mu)} \right) \right] \quad (8)$$

which is the same as the expression obtained in Ref.⁵⁸.

B. Obtaining the expression for energy magnetization from the Einstein relation of the energy current

The expression in Eq. (6) is the total energy current density, which is due to the sum of the transport and

magnetization parts of the energy current. The magnetization energy current is the curl of energy magnetization, which is⁵⁷, $\mathbf{M}^E = \mathbf{M}_0^E - (\mathbf{E} \cdot \mathbf{r})\mathbf{M}^e$. Here \mathbf{M}_0^E is the energy magnetization at zero external electric field, and \mathbf{M}^e is the usual charge magnetization⁷³ (whose curl is the bound electric current density).

In the presence of an electric field, we need to add this additional term because the charges carry the potential whose gradient gives rise to the field. Both the bare energy magnetization \mathbf{M}_0^E and the charge magnetization \mathbf{M}^e are functions of the chemical potential μ and temperature T . Then, the circulating, bound energy current density is,

$$\mathbf{j}_M^E = \nabla \times \mathbf{M}_0^E - \mathbf{E} \times \mathbf{M}^e - \underbrace{(\mathbf{E} \cdot \mathbf{r})\nabla \times \mathbf{M}^e}_{\text{2nd order quantity}} \quad (9)$$

Here $\nabla \times \mathbf{M}^e$ is already a function of $\nabla\mu$ and ∇T , and hence, the term $(\mathbf{E} \cdot \mathbf{r})\nabla \times \mathbf{M}^e$ is of second order, and we drop it. It follows that the transport energy current density is (see Appendix F),

$$\begin{aligned} \mathbf{j}_{\text{transport}}^E &= \mathbf{j}_{\text{total}}^E - \mathbf{j}_M^E \\ &= \int \frac{2d\mathbf{k}}{(2\pi)^d} \varepsilon_0(\mathbf{k}) \frac{1}{\hbar} \frac{\partial \varepsilon_0(\mathbf{k})}{\partial \mathbf{k}} g_{\mathbf{k}} \\ &\quad - \nabla\mu \times \frac{\partial}{\partial \mu} \int \frac{2d\mathbf{k}}{(2\pi)^d} \varepsilon_0(\mathbf{k}) f_{\mathbf{k}} \left(\frac{\mathbf{m}_{\mathbf{k}}}{e} \right) \\ &\quad - \nabla T \times \frac{\partial}{\partial T} \int \frac{2d\mathbf{k}}{(2\pi)^d} \varepsilon_0(\mathbf{k}) f_{\mathbf{k}} \left(\frac{\mathbf{m}_{\mathbf{k}}}{e} \right) \\ &\quad + e\mathbf{E} \times \mathbf{V}_1 - \nabla\mu \times \frac{\partial \mathbf{M}_0^E}{\partial \mu} - \nabla T \times \frac{\partial \mathbf{M}_0^E}{\partial T} \end{aligned} \quad (10)$$

where

$$\mathbf{V}_1 = \int \frac{2d\mathbf{k}}{(2\pi)^d} \frac{\boldsymbol{\Omega}(\mathbf{k})}{\hbar} \left[\varepsilon_0 f_{\mathbf{k}} + k_B T \log \left(1 + e^{-\beta(\varepsilon_0(\mathbf{k}) - \mu)} \right) \right].$$

In Eq. (10), there is an asymmetry between $e\mathbf{E}$ and $\nabla\mu$. For the *Einstein relation* to hold for the energy current, the allowed terms can only depend on the combination $(e\mathbf{E} + \nabla\mu)$. As shown in Sec.IV, $g_{\mathbf{k}}$ is proportional to this particular combination. Thus, for the Einstein relation to hold,

$$\begin{aligned} -\frac{\partial \mathbf{M}_0^E}{\partial \mu} &= \int \frac{2d\mathbf{k}}{(2\pi)^d} \varepsilon_0(\mathbf{k}) \frac{\partial f_{\mathbf{k}}}{\partial \mu} \left(\frac{\mathbf{m}_{\mathbf{k}}}{e} \right) \\ &\quad + \int \frac{2d\mathbf{k}}{(2\pi)^d} \frac{\boldsymbol{\Omega}(\mathbf{k})}{\hbar} \left[\varepsilon_0(\mathbf{k}) f_{\mathbf{k}} \right. \\ &\quad \left. + k_B T \log \left(1 + e^{-\beta(\varepsilon_0(\mathbf{k}) - \mu)} \right) \right]. \end{aligned} \quad (11)$$

When the temperature scale ($k_B T$) is negligible compared to the chemical potential μ (more precisely, negligible compared to $(\mu - \varepsilon_{\min})$, where ε_{\min} is the band minima), which happens for ordinary metals in room temperature, and there are more than one bands, it can be

shown that (See Appendix G) up to leading order (zeroth order) in temperature,

$$\begin{aligned} -\frac{\partial \mathbf{M}_0^E}{\partial \mu} \Big|_{T \rightarrow 0} &\approx \sum_n \frac{\mu}{\hbar} \int \frac{2d\mathbf{k}}{(2\pi)^d} \left[\boldsymbol{\Omega}_n(\mathbf{k}) f_{n\mathbf{k}} \right. \\ &\quad \left. + \delta(\varepsilon_{0,n}(\mathbf{k}) - \mu) \left(\frac{\hbar \mathbf{m}_{\mathbf{k}}}{e} \right) \right], \end{aligned} \quad (12)$$

where n is the band index. This has a particularly simple interpretation in a *two-dimensional* Chern Insulator, where the chemical potential falls on a band gap and hence, the term containing the Dirac Delta function can be dropped. The magnitude of the circulating, bound energy current along an edge (not to be confused with the energy current density \mathbf{j}^E , which resides in the bulk) is given by $I_0^E = \Delta z |\mathbf{M}_0^E \times \hat{n}|$ (see Fig. 2).

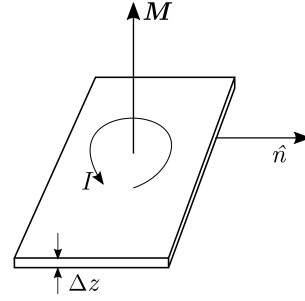


FIG. 2. The circulating current and the magnetization in an effectively two-dimensional sample of thickness Δz are related as $I = \Delta z |\mathbf{M} \times \hat{n}|$.

Then, the result can be rewritten as, $\frac{\Delta I_0^E}{\Delta \mu} \Big|_{\text{Chern}} = \Delta z \sum_n \frac{\mu}{\hbar} \int \frac{2d\mathbf{k}}{(2\pi)^2} \boldsymbol{\Omega}_n(\mathbf{k}) f_{n\mathbf{k}}$. A similar result for the charge magnetization and the circulating electric current was shown in Refs.^{68,74}, using the known expression^{58,67,68} for the charge magnetization. Note that we obtained this condition on the energy magnetization current from a necessary condition (Eq. (11)) so that the Einstein relation would hold. Let us discuss several cases, similar to the discussion on the circulating electric current by R. Resta⁷⁴.

For a Chern insulator, the integral of the Berry curvature over the filled bands (with all the factors of 2π included) is the sum of the Chern numbers of those bands, which can be interpreted as the number of chiral edge states^{75,76}. We get,

$$\frac{\Delta I_0^E}{\Delta \mu} \Big|_{\text{Chern}} = \Delta z \left(\frac{\mu}{\hbar} \right) |N_{\odot} - N_{\ominus}|, \quad (13)$$

where N_{\odot} (N_{\ominus}) is the number of chiral edge states circulating along the anti-clockwise (clockwise) direction. As the chemical potential is varied, per unit change in chemical potential, each of the chiral edge states contributes to the circulating energy current by an amount $\frac{\mu}{\hbar}$ per unit thickness of the sample⁷⁷.

When there are no chiral edge states (e.g. in a trivial insulator), this quantity is zero. Also, when there are equal number of chiral edge states circulating in the clockwise and counter-clockwise direction, their contributions cancel.

In a metallic sample, the result would be similar to Eq. (13) for the filled bands, but the Fermi surface would contribute (through the delta function term), and if the conduction band (which is partially filled) is of topological nature, it would also partially contribute.

It has been shown^{69,74} that the derivative of the charge magnetization with respect to the chemical potential has a term, $\frac{e}{\hbar} \sum_n \int \frac{d\mathbf{k}}{(2\pi)^d} f_{n\mathbf{k}} \boldsymbol{\Omega}_n(\mathbf{k})$. The sign difference with Eq. (12) is because, when an electron moves, the local energy current density and the electric current density would be in opposite directions, as the electron bears a negative charge.

The expression for the bare energy magnetization can be calculated by numerically integrating Eq. (11),

$$\begin{aligned} M_0^E &= \sum_n \left[\int \frac{2d\mathbf{k}}{(2\pi)^d} \varepsilon_0(\mathbf{k}) f_{n\mathbf{k}} \left(\frac{\mathbf{m}_{\mathbf{k}}}{-e} \right) \right. \\ &\quad - \int \frac{2d\mathbf{k}}{(2\pi)^d} \frac{\boldsymbol{\Omega}_n(\mathbf{k})}{\hbar} \int_{\tilde{\mu}=-\infty}^{\mu} d\tilde{\mu} \left\{ \varepsilon_{0,n}(\mathbf{k}) f_{n\mathbf{k}}(\tilde{\mu}) \right. \\ &\quad \left. \left. + k_B T \log \left(1 + e^{-\beta(\varepsilon_{0,n}(\mathbf{k}) - \tilde{\mu})} \right) \right\} \right], \end{aligned} \quad (14)$$

with the initial condition that the energy magnetization would be zero when the chemical potential is at negative infinity, as then there would be no electrons to generate the circulating currents. Here, the first term can be regarded as the contribution of the individual orbital magnetic moments of the Bloch wavepackets, and the second term involving the Berry curvature arises due to the modification of the phase space volume. This expression matches the results obtained from gauge theories of gravity⁷⁸, that obtained by introducing an inhomogeneous disorder field⁶⁰, and that obtained by introducing a gravitomagnetic field⁶³.

IV. COMPLETE EXPRESSIONS FOR TRANSPORT CURRENTS IN A TWO-DIMENSIONAL SAMPLE WITH NON-ZERO BERRY CURVATURE

The electric transport current density can be obtained by subtracting the curl of the charge magnetization from the total electric current density⁵⁸. The expression for the transport electric current density, and the heat current density⁷⁹ (See Appendix F) are,

$$\begin{aligned} \mathbf{j}_{\text{transport}}^e &= -e \int \frac{2d\mathbf{k}}{(2\pi)^d} g_{\mathbf{k}} \frac{1}{\hbar} \frac{\partial \varepsilon_0(\mathbf{k})}{\partial \mathbf{k}} \\ &\quad - \int \frac{2d\mathbf{k}}{(2\pi)^d} f_{\mathbf{k}} \frac{e^2}{\hbar} \left(\left[\mathbf{E} + \frac{\nabla \mu}{e} \right] \times \boldsymbol{\Omega}(\mathbf{k}) \right) \\ &\quad - \frac{\nabla T}{T} \times e \mathbf{V}_2 \end{aligned} \quad (15a)$$

$$\begin{aligned} \mathbf{j}_{\text{transport}}^Q &= \mathbf{j}_{\text{transport}}^E - \mu \mathbf{j}_{\text{transport}}^N \\ &= \int \frac{2d\mathbf{k}}{(2\pi)^d} (\varepsilon_0(\mathbf{k}) - \mu) \frac{1}{\hbar} \frac{\partial \varepsilon_0(\mathbf{k})}{\partial \mathbf{k}} g_{\mathbf{k}} \\ &\quad + (e\mathbf{E} + \nabla \mu) \times \mathbf{V}_2 + \nabla T \times \frac{\partial \mathbf{V}_3}{\partial T} \end{aligned} \quad (15b)$$

where

$$\begin{aligned} \mathbf{V}_2 &= \int \frac{2d\mathbf{k}}{(2\pi)^d} \frac{\boldsymbol{\Omega}(\mathbf{k})}{\hbar} \left[(\varepsilon_0(\mathbf{k}) - \mu) f_{\mathbf{k}} \right. \\ &\quad \left. + k_B T \log \left(1 + e^{-\beta(\varepsilon_0(\mathbf{k}) - \mu)} \right) \right], \end{aligned}$$

and

$$\begin{aligned} \mathbf{V}_3 &= \int \frac{2d\mathbf{k}}{(2\pi)^d} \frac{\boldsymbol{\Omega}(\mathbf{k})}{\hbar} \left[-\mu k_B T \log \left(1 + e^{-\beta(\varepsilon_0(\mathbf{k}) - \mu)} \right) \right. \\ &\quad \left. + \int_{\tilde{\mu}=-\infty}^{\mu} d\tilde{\mu} \left[\varepsilon_0(\mathbf{k}) f_{\mathbf{k}}(\tilde{\mu}) + k_B T \log \left(1 + e^{-\beta(\varepsilon_0(\mathbf{k}) - \tilde{\mu})} \right) \right] \right]. \end{aligned}$$

These expressions match with those previously obtained by introducing an inhomogeneous disorder field⁶⁰. Note that $\mathbf{V}_2 \rightarrow 0$ as $T \rightarrow 0$, implying $\overleftrightarrow{L}_{21} = 0$ at $T = 0$, which is consistent with the Onsager relation, Eq. (2). Once the band structure is known, the value of $\boldsymbol{\Omega}(\mathbf{k})$ can be obtained from the Bloch wavefunctions. Then, if we can find the expression of the out of equilibrium part of the distribution function, $g_{\mathbf{k}}$, the transport parts of the electric and the heat currents can be calculated up to linear order. We can calculate $g_{\mathbf{k}}$ with the Boltzmann transport equation⁸⁰. When the external fields are time independent, we can drop the explicit partial derivatives with respect to time, and the equation takes the form,

$$\frac{g_{\mathbf{k}}}{\tau_{\mathbf{k}}} + \dot{\mathbf{k}} \cdot \frac{\partial}{\partial \mathbf{k}} g_{\mathbf{k}} + \dot{\mathbf{r}} \cdot \frac{\partial}{\partial \mathbf{r}} g_{\mathbf{k}} = -\dot{\mathbf{k}} \cdot \frac{\partial}{\partial \mathbf{k}} f_{\mathbf{k}} - \dot{\mathbf{r}} \cdot \frac{\partial}{\partial \mathbf{r}} f_{\mathbf{k}} \quad (16)$$

In general, the scattering timescale $\tau_{\mathbf{k}}$ may depend on the crystal momentum of the electron. However, only the electrons near the Fermi surface can be effectively scattered, and if the scattering timescale only depends on the energy of the Bloch wavefunction, then we can consider it to be a constant. The following calculation remains valid even when $\tau_{\mathbf{k}}$ varies with the crystal momentum. Using the decoupled equations of motion in two-dimensions (Eq. (B3) and Eq. (B4)), the right hand side of the above equation simplifies to (see Appendix I1),

$$\frac{\partial f_{\mathbf{k}}}{\partial \varepsilon_{\mathbf{k}}} \frac{1}{1 + \frac{e}{\hbar} \mathbf{B} \cdot \boldsymbol{\Omega}(\mathbf{k})} \frac{1}{\hbar} \frac{\partial \varepsilon_{\mathbf{k}}}{\partial \mathbf{k}} \cdot \left[e\mathbf{E} + \nabla \mu + \nabla T \frac{\varepsilon_{\mathbf{k}} - \mu}{T} \right].$$

Here we can exchange $e\mathbf{E} \leftrightarrow \nabla\mu$, i.e., the Einstein relation holds for the currents generated by the non-equilibrium distribution. We will show that the Onsager relation holds as well. We assume that the fields are constant in space, and *drop the term* containing $\frac{\partial g_{\mathbf{k}}}{\partial \mathbf{r}}$ ⁸¹. Then, the BTE takes the form,

$$\frac{g_{\mathbf{k}}}{\tau_{\mathbf{k}}} - \frac{\frac{e}{\hbar}\mathbf{E} + \frac{e}{\hbar^2}\frac{\partial \varepsilon_{\mathbf{k}}}{\partial \mathbf{k}} \times \mathbf{B}}{1 + \frac{e}{\hbar}\mathbf{B} \cdot \boldsymbol{\Omega}} \cdot \frac{\partial}{\partial \mathbf{k}} g_{\mathbf{k}} = \frac{\partial f}{\partial \varepsilon_{\mathbf{k}}} \frac{1}{1 + \frac{e}{\hbar}\mathbf{B} \cdot \boldsymbol{\Omega}} \frac{1}{\hbar} \frac{\partial \varepsilon_{\mathbf{k}}}{\partial \mathbf{k}} \cdot \left[e\mathbf{E} + \nabla\mu + \nabla T \frac{\varepsilon_{\mathbf{k}} - \mu}{T} \right].$$

We can further simplify this equation. If we neglect the term $\mathbf{E} \cdot \frac{\partial g_{\mathbf{k}}}{\partial \mathbf{k}}$ in the LHS, we would find (in the next section) that $g_{\mathbf{k}}$ is a linear function of the electric field, the chemical potential gradient, and the temperature gradient. Then, $\mathbf{E} \cdot \frac{\partial g_{\mathbf{k}}}{\partial \mathbf{k}}$ would be quadratic in the applied fields, and the solution would remain self-consistent up to the first order if we neglect it. Finally, the equation takes the form,

$$\frac{g_{\mathbf{k}}}{\tau_{\mathbf{k}}} - \underbrace{\frac{\frac{e}{\hbar^2}\frac{\partial \varepsilon_{\mathbf{k}}}{\partial \mathbf{k}} \times \mathbf{B}}{1 + \frac{e}{\hbar}\mathbf{B} \cdot \boldsymbol{\Omega}} \cdot \frac{\partial}{\partial \mathbf{k}} g_{\mathbf{k}}}_{\text{treated as a perturbation}} = \frac{\partial f}{\partial \varepsilon_{\mathbf{k}}} \frac{1}{1 + \frac{e}{\hbar}\mathbf{B} \cdot \boldsymbol{\Omega}} \frac{1}{\hbar} \frac{\partial \varepsilon_{\mathbf{k}}}{\partial \mathbf{k}} \cdot \left[e\mathbf{E} + \nabla\mu + \nabla T \frac{\varepsilon_{\mathbf{k}} - \mu}{T} \right] \quad (17)$$

We treat the second term in the LHS as a perturbation. An order of the magnitude estimate in Appendix J shows that the magnetic field needs to be of the order of hundreds of Tesla for this term to be of the same magnitude as the other term, $\frac{g_{\mathbf{k}}}{\tau_{\mathbf{k}}}$. Since the magnetic field in the laboratories are much less than that, we can treat it as a perturbation. We would see that this term gives rise to the (ordinary) Hall effect in samples with a non-zero Berry curvature, and that is why we would not completely neglect it. Up to linear order in external fields, the solution of Eq. (17) is (see Appendix I),

$$g_{\mathbf{k}} = \frac{\partial f}{\partial \varepsilon_{\mathbf{k}}} \frac{1}{1 + \frac{e}{\hbar}\mathbf{B} \cdot \boldsymbol{\Omega}} \frac{\tau_{\mathbf{k}}}{\hbar} \frac{\partial \varepsilon_{\mathbf{k}}}{\partial \mathbf{k}} \cdot \mathbf{S} + \frac{\frac{e\tau_{\mathbf{k}}}{\hbar^2}}{1 + \frac{e}{\hbar}\mathbf{B} \cdot \boldsymbol{\Omega}} \frac{\partial \varepsilon_{\mathbf{k}}}{\partial \mathbf{k}} \cdot \mathbf{B} \times \left[\frac{\partial}{\partial \mathbf{k}} \left[\frac{\frac{\partial f}{\partial \varepsilon_{\mathbf{k}}} \tau_{\mathbf{k}}}{1 + \frac{e}{\hbar}\mathbf{B} \cdot \boldsymbol{\Omega}} \right] \left(\frac{\mathbf{S}}{\hbar} \cdot \frac{\partial \varepsilon_{\mathbf{k}}}{\partial \mathbf{k}} \right) \right] + \frac{\frac{e\tau_{\mathbf{k}}}{\hbar^2}}{1 + \frac{e}{\hbar}\mathbf{B} \cdot \boldsymbol{\Omega}} \frac{\partial \varepsilon_{\mathbf{k}}}{\partial \mathbf{k}} \cdot \mathbf{B} \times \left[\frac{\frac{\partial f}{\partial \varepsilon_{\mathbf{k}}} \tau_{\mathbf{k}}}{1 + \frac{e}{\hbar}\mathbf{B} \cdot \boldsymbol{\Omega}} \left[\left(\frac{1}{\hbar} \mathbf{S} \cdot \frac{\partial}{\partial \mathbf{k}} \right) \frac{\partial \varepsilon_{\mathbf{k}}}{\partial \mathbf{k}} \right] \right] \quad (18)$$

where $\mathbf{S} = e\mathbf{E} + \nabla\mu + \frac{\varepsilon_{\mathbf{k}} - \mu}{T} \nabla T$ ⁸². Having obtained Eq. (18), $g_{\mathbf{k}}$ has to be substituted in the expressions of transport currents, Eq. (15a) and Eq. (15b), and the transport coefficients $\overset{\leftrightarrow}{L}_{11}$, $\overset{\leftrightarrow}{L}_{12}$, $\overset{\leftrightarrow}{L}_{21}$ and $\overset{\leftrightarrow}{L}_{22}$ can be read off. However, the actual computation will require the band structure and the Bloch eigenfunctions (to calculate the Berry curvature).

In this solution, ∇T is always multiplied with a factor of $\frac{\varepsilon_{\mathbf{k}} - \mu}{T}$, and the expression of heat current has a factor of $(\varepsilon_{\mathbf{k}} - \mu)$ (Eq. (15b)), from which it follows that the Onsager relation holds for the contribution due to the non-equilibrium part of the distribution function in presence of Berry curvature. It has previously been demonstrated in Ref.⁵⁸ that the Onsager relation holds for the contribution due to the equilibrium part of the distribution.

V. CONCLUSIONS

The Einstein relation has been shown to hold from certain microscopic theories for the electric, energy, and heat transport current in systems with non-zero Berry curvature^{58,60}. In this paper, we employ a complementary approach to first demonstrate that, assuming that the Einstein relation holds (whose validity can be established from thermodynamic arguments^{55,56}, irrespective of the underlying microscopic theory), an expression for the charge magnetization can be obtained in a relatively straightforward manner which agrees with the expression obtained for this quantity previously. We then extend this argument to the transport energy current and the heat current, to obtain a condition that the energy magnetization has to obey. We have used it to obtain an expression for the energy magnetization, analogous to the one that exists for the charge magnetization. Moreover, we have found a physical interpretation of this condition, in terms of the circulating chiral edge modes in a Chern insulator. We have also solved the Boltzmann transport equation up to linear order in potential and temperature gradients for a two-dimensional system, which can be used to obtain the regular Hall response in systems like bilayer graphene, which possess a non-zero Berry curvature, but display no anomalous Hall Effect due to time reversal invariance.

ACKNOWLEDGMENTS

A. P. acknowledges support from the KVPY programme and S. M. thanks the Department of Science and Technology, Government of India for support. We thank Vijay Shenoy for discussions regarding the absolute value of the chemical potential appearing in several expressions.

Appendix A: About the heat conductivity tensor

Here we denoted thermal conductivity as the heat current per unit temperature gradient, at zero electric field or zero chemical potential gradient. Sometimes, thermal conductivity is denoted as heat current per unit temperature gradient, when the net electric current is zero (an internal electrochemical potential gradient is generated to maintain zero electric current, but that internal electrochemical potential gradient in turn contributes to the heat current). In that case, it can be shown that (see Eq. (13.56) of Ref.⁵²) the heat current (which is the heat conductivity, because we set $\nabla T = 1$) is $\overleftrightarrow{L}_{22} - \overleftrightarrow{L}_{21} (\overleftrightarrow{L}_{11})^{-1} \overleftrightarrow{L}_{12}$. But this additional term is a small correction, it is of the order $\left(\frac{k_B T}{\varepsilon_F}\right)^2$.

Appendix B: Decoupling of the equations of motion and their simplification in two dimensions

The coupled differential equations of motion for $\dot{\mathbf{r}}$ and $\dot{\mathbf{k}}$ can be decoupled with some simple vector algebra⁶¹, and the resulting decoupled equations are,

$$\dot{\mathbf{r}} = \frac{\frac{1}{\hbar} \frac{\partial \varepsilon_{\mathbf{k}}}{\partial \mathbf{k}} + \frac{e}{\hbar} (\mathbf{E} \times \boldsymbol{\Omega}) + \frac{e}{\hbar^2} (\boldsymbol{\Omega} \cdot \frac{\partial \varepsilon_{\mathbf{k}}}{\partial \mathbf{k}}) \mathbf{B}}{1 + \frac{e}{\hbar} \mathbf{B} \cdot \boldsymbol{\Omega}} \quad (\text{B1})$$

$$\dot{\mathbf{k}} = -\frac{\frac{e}{\hbar} \mathbf{E} + \frac{e}{\hbar^2} \frac{\partial \varepsilon_{\mathbf{k}}}{\partial \mathbf{k}} \times \mathbf{B} + \frac{e^2}{\hbar^2} (\mathbf{E} \cdot \mathbf{B}) \boldsymbol{\Omega}}{1 + \frac{e}{\hbar} \mathbf{B} \cdot \boldsymbol{\Omega}} \quad (\text{B2})$$

In a two-dimension sample, the Berry curvature $\boldsymbol{\Omega}$ is along the z axis, while $\frac{\partial \varepsilon_{\mathbf{k}}}{\partial \mathbf{k}}$ is in the xy plane, then the quantity $\boldsymbol{\Omega} \cdot \frac{\partial \varepsilon_{\mathbf{k}}}{\partial \mathbf{k}} = 0$. Also, in two-dimensions, $\boldsymbol{\Omega}$ is along the z axis, whereas \mathbf{k} is restricted to the xy plane. Then we can neglect the term $(\mathbf{E} \cdot \mathbf{B}) \boldsymbol{\Omega}$ in the expression of $\dot{\mathbf{k}}$. Then the equations (B1) and (B2) simplify to,

$$\dot{\mathbf{r}} = \frac{\frac{1}{\hbar} \frac{\partial \varepsilon_{\mathbf{k}}}{\partial \mathbf{k}} + \frac{e}{\hbar} (\mathbf{E} \times \boldsymbol{\Omega})}{1 + \frac{e}{\hbar} \mathbf{B} \cdot \boldsymbol{\Omega}} \quad (\text{B3})$$

$$\dot{\mathbf{k}} = -\frac{\frac{e}{\hbar} \mathbf{E} + \frac{e}{\hbar^2} \frac{\partial \varepsilon_{\mathbf{k}}}{\partial \mathbf{k}} \times \mathbf{B}}{1 + \frac{e}{\hbar} \mathbf{B} \cdot \boldsymbol{\Omega}} \quad (\text{B4})$$

Appendix C: Self contained derivation of Eq. (6a)

The wavefunction of a Bloch wavepacket located at r_0 , and peaked at crystal momentum k_0 is^{4,7} (here we follow the notation from⁷),

$$\psi(\mathbf{r})_{n, \mathbf{k}_0} = \int d\mathbf{k} w(\mathbf{k} - \mathbf{k}_0) e^{i\mathbf{A}(\mathbf{k}_0) \cdot (\mathbf{k} - \mathbf{k}_0)} e^{-i\mathbf{k} \cdot \mathbf{r}_0} (e^{i\mathbf{k} \cdot \mathbf{r}} u_{n, \mathbf{k}}(\mathbf{r})). \quad (\text{C1})$$

Here $w(\mathbf{k} - \mathbf{k}_0)$ is an (arbitrary) weight function sharply peaked at $\mathbf{k} = \mathbf{k}_0$, $u_{n, \mathbf{k}}(\mathbf{r})$ is the periodic part of the Bloch wavefunction with crystal momentum \mathbf{k} and band index n , and $\mathbf{A}(\mathbf{k}) = i \langle u_{n, \mathbf{k}} | \nabla_{\mathbf{k}} | u_{n, \mathbf{k}} \rangle$ is the Berry connection. $u_{n, \mathbf{k}}(\mathbf{r})$ is normalized such that $\langle u_{n, \mathbf{k}} | u_{n, \mathbf{k}} \rangle = \int_{\text{unit cell}} d\mathbf{r} |u_{n, \mathbf{k}}(\mathbf{r})|^2 = 1$. It is to be noted that the calculations in Appendix D does not depend on the actual form of the weight function $w(\mathbf{k} - \mathbf{k}_0)$.

An electron in a Bloch wavepacket centered at \mathbf{r}_0 may be found at another point \mathbf{r}_1 ($\neq \mathbf{r}_0$), and it can contribute to the local current density at \mathbf{r}_1 . As an analogy, the total electron density near an atom in an insulator is not just the electron density of that atom, but the sum of electron densities belonging to all the atoms, evaluated at that point. Of course, atoms far away from the point would contribute very less, but nearby atoms can contribute significantly. Let us try write down the expectation value of a general operator $\hat{\mathcal{O}}$ at a point \mathbf{r}_1 . We would consider the sum of the contributions from all the wavepackets centered at a point \mathbf{r}_0 , and sum over all \mathbf{r}_0 ¹². That is,

$$\langle \hat{\mathcal{O}} \rangle(\mathbf{r}_1) = \int d\mathbf{r}_0 \int \frac{2d\mathbf{k}}{(2\pi)^d} (f + g) \left(1 + \frac{e}{\hbar} \mathbf{B} \cdot \boldsymbol{\Omega}\right) \langle \psi_{\mathbf{k}, \mathbf{r}_0} | \frac{1}{2} \{\hat{\mathcal{O}}, \delta(\hat{\mathbf{r}} - \mathbf{r}_1)\} | \psi_{\mathbf{k}, \mathbf{r}_0} \rangle$$

Here $\hat{\mathbf{r}}$ is the position operator that acts on the states. \mathbf{r}_1 is just a parameter, and here \mathbf{r}_1 acting on a state has to be understood as the operator $\mathbf{r}_1\hat{\mathcal{I}}$, with $\hat{\mathcal{I}}$ being the identity operator. And, $\frac{1}{2}\{\hat{\mathcal{O}}, \delta(\hat{\mathbf{r}} - \mathbf{r}_0)\}$ denotes the Hermitized operator $\frac{\hat{\mathcal{O}}\delta(\hat{\mathbf{r}} - \mathbf{r}_1) + \delta(\hat{\mathbf{r}} - \mathbf{r}_1)\hat{\mathcal{O}}}{2}$, in case $\hat{\mathbf{r}}$ and $\hat{\mathcal{O}}$ do not commute (for example, to calculate the electric current, we need to find the expectation value of the velocity operator, which does not commute with the position operator).

Now, since the state is centered around \mathbf{r}_0 , we can take that into account by expanding the delta function (up to leading order)⁸³,

$$\begin{aligned}\delta(\mathbf{r}_1 - \hat{\mathbf{r}}) &= \delta((\mathbf{r}_1 - \mathbf{r}_0) - (\hat{\mathbf{r}} - \mathbf{r}_0)) \approx \delta(\mathbf{r}_1 - \mathbf{r}_0) - (\hat{\mathbf{r}} - \mathbf{r}_0) \cdot \nabla_{\mathbf{r}_1} \delta(\mathbf{r}_1 - \mathbf{r}_0) \\ &= \delta(\mathbf{r}_1 - \mathbf{r}_0) - \nabla_{\mathbf{r}_1} \cdot [(\hat{\mathbf{r}} - \mathbf{r}_0) \delta(\mathbf{r}_1 - \mathbf{r}_0)]\end{aligned}$$

Using this, we get,

$$\begin{aligned}\langle \hat{\mathcal{O}} \rangle(\mathbf{r}_1) &= \int \frac{2d\mathbf{k}}{(2\pi)^d} (f + g) \left(1 + \frac{e}{\hbar} \mathbf{B} \cdot \boldsymbol{\Omega}\right) \langle \psi_{\mathbf{k}, \mathbf{r}_1} | \hat{\mathcal{O}} | \psi_{\mathbf{k}, \mathbf{r}_1} \rangle \\ &\quad - \nabla_{\mathbf{r}_1} \cdot \int \frac{2d\mathbf{k}}{(2\pi)^d} (f + g) \left(1 + \frac{e}{\hbar} \mathbf{B} \cdot \boldsymbol{\Omega}\right) \langle \psi_{\mathbf{k}, \mathbf{r}_1} | \frac{1}{2} \{\hat{\mathcal{O}}, (\hat{\mathbf{r}} - \mathbf{r}_1)\} | \psi_{\mathbf{k}, \mathbf{r}_1} \rangle\end{aligned}\tag{C2}$$

We would work with this leading order expansion of the Delta function. For the current density operator, we need to separately take the three components of $\hat{\mathbf{j}} = -e\frac{\hat{\mathbf{p}}}{m}$ to be $\hat{\mathcal{O}}$.

Let us define the tensor,

$$\mathcal{M}_{ij} = \langle \psi_{\mathbf{k}, \mathbf{r}_1} | \frac{1}{2} \{-e\frac{\hat{p}_j}{m}, (\hat{\mathbf{r}} - \mathbf{r}_1)_i\} | \psi_{\mathbf{k}, \mathbf{r}_1} \rangle$$

where i, j runs from $1, 2, \dots, d$. It can be shown that (see Appendix D1) \mathcal{M}_{ij} is completely anti-symmetric⁴⁰. Then, in 3D universe (the sample can still be 2 dimensional), we can construct a vector, whose components are, $\tilde{m}_i = \frac{1}{2}\epsilon_{ijk}\mathcal{M}_{jk}$ ⁴⁰. It can be shown (see Appendix D2) that this is identical to the i -th component of the orbital magnetic moment $\mathbf{m}_{\mathbf{k}}$, defined in Eq. (5). We can also invert this relation, $\mathcal{M}_{jk} = \epsilon_{ijk}m_i$.

Note that we can rewrite the second term as,

$$\begin{aligned}-\nabla_{\mathbf{r}_1} \cdot \int \frac{2d\mathbf{k}}{(2\pi)^d} (f + g) \left(1 + \frac{e}{\hbar} \mathbf{B} \cdot \boldsymbol{\Omega}\right) \langle \psi_{\mathbf{k}, \mathbf{r}_1} | \frac{1}{2} \{\hat{\mathcal{O}}, (\hat{\mathbf{r}} - \mathbf{r}_1)\} | \psi_{\mathbf{k}, \mathbf{r}_1} \rangle \\ = -\partial_i \int \frac{2d\mathbf{k}}{(2\pi)^d} (f + g) \left(1 + \frac{e}{\hbar} \mathbf{B} \cdot \boldsymbol{\Omega}\right) \langle \psi_{\mathbf{k}, \mathbf{r}_1} | \frac{1}{2} \{\hat{\mathcal{O}}, (\hat{\mathbf{r}} - \mathbf{r}_1)_i\} | \psi_{\mathbf{k}, \mathbf{r}_1} \rangle,\end{aligned}$$

with sum over i implied. Then to get the μ -th component of $\langle \hat{\mathbf{j}}^e \rangle$, we take $\hat{\mathcal{O}} = -e\frac{\hat{p}_\mu}{m}$. We denote $[dk] = \frac{2d\mathbf{k}}{(2\pi)^d} (1 + \frac{e}{\hbar} \mathbf{B} \cdot \boldsymbol{\Omega})$. We get,

$$\begin{aligned}-\partial_i \int [dk] (f + g) \mathcal{M}_{i\mu} \\ = -\partial_i \int [dk] (f + g) m_\nu \epsilon_{\nu i \mu} \\ = +\partial_i \int [dk] (f + g) m_\nu \epsilon_{i \nu \mu}\end{aligned}$$

This is the μ -th component of $\nabla \times \int \frac{2d\mathbf{k}}{(2\pi)^d} (f + g) (1 + \frac{e}{\hbar} \mathbf{B} \cdot \boldsymbol{\Omega}) \mathbf{m}_{\mathbf{k}}$. When the electric field, the magnetic field, the chemical potential gradient and the temperature gradients are constant, we can drop the term $\nabla \times \int 2d\mathbf{k} g (1 + \frac{e}{\hbar} \mathbf{B} \cdot \boldsymbol{\Omega}) \mathbf{m}_{\mathbf{k}}$, because g is already a linear function in the constant fields \mathbf{E} , $\nabla\mu$ and ∇T .

The first term, $\int \frac{2d\mathbf{k}}{(2\pi)^d} (f + g) (1 + \frac{e}{\hbar} \mathbf{B} \cdot \boldsymbol{\Omega}) \langle \psi_{\mathbf{k}, \mathbf{r}_1} | \hat{\mathbf{j}}^e | \psi_{\mathbf{k}, \mathbf{r}_1} \rangle$ is the contribution of the center of the wavepacket, which is (up to linear order), $-e \int \frac{2d\mathbf{k}}{(2\pi)^d} \left[g \mathbf{k} \frac{1}{\hbar} \frac{\partial \epsilon_{\mathbf{k}}}{\partial \mathbf{k}} + f_{\mathbf{k}} \frac{e}{\hbar} (\mathbf{E} \times \boldsymbol{\Omega}(\mathbf{k})) \right]$ (note that the phase space correction factor $(1 + \frac{e}{\hbar} \mathbf{B} \cdot \boldsymbol{\Omega})$ gets canceled). Finally we get, up to linear order,

$$\mathbf{j}_{\text{total}}^e = \langle \hat{\mathbf{j}}^e \rangle = -e \int \frac{2d\mathbf{k}}{(2\pi)^d} \left[g \mathbf{k} \frac{1}{\hbar} \frac{\partial \epsilon_{\mathbf{k}}}{\partial \mathbf{k}} + f_{\mathbf{k}} \frac{e}{\hbar} (\mathbf{E} \times \boldsymbol{\Omega}(\mathbf{k})) \right] + \nabla \times \int \frac{2d\mathbf{k}}{(2\pi)^d} f_{\mathbf{k}} \left(1 + \frac{e}{\hbar} \mathbf{B} \cdot \boldsymbol{\Omega}\right) \mathbf{m}_{\mathbf{k}}.\tag{C3}$$

This equation has a simple interpretation. The net current is the contribution of the movement of the center the wavepackets, as well as due to the rotation about their individual centers. We want to calculate the properties of the anomalous Hall effect, where $\mathbf{B} = 0$. Then the expression simplifies to

$$\mathbf{j}_{\text{total}}^e |_{\mathbf{B}=0} = -e \int \frac{2d\mathbf{k}}{(2\pi)^d} \left[g \mathbf{k} \frac{1}{\hbar} \frac{\partial \epsilon_0(\mathbf{k})}{\partial \mathbf{k}} + f_{\mathbf{k}} \frac{e}{\hbar} (\mathbf{E} \times \boldsymbol{\Omega}(\mathbf{k})) \right] + \nabla \times \int \frac{2d\mathbf{k}}{(2\pi)^d} f_{\mathbf{k}} \mathbf{m}_{\mathbf{k}}.\tag{C4}$$

Appendix D: Certain calculations related to orbital magnetic moment

1. $\mathcal{M}_{ij} = \langle \psi_{\mathbf{k}, \mathbf{r}_1} | \frac{1}{2} \{ -e \frac{\hat{p}_i}{m}, (\hat{\mathbf{r}} - \mathbf{r}_1)_i \} | \psi_{\mathbf{k}, \mathbf{r}_1} \rangle$ is a totally antisymmetric tensor

The effective Hamiltonian⁵² acting on $u_{n, \mathbf{k}}$ in its effective Schrodinger equation is, $H(\mathbf{k}) = \left[\frac{\hbar^2}{2m} (\mathbf{k} - i\nabla)^2 + V(\mathbf{r}) \right] = e^{-i\mathbf{k}\cdot\mathbf{r}} \hat{H} e^{i\mathbf{k}\cdot\mathbf{r}}$, with \hat{H} being the original Hamiltonian.

Let us define $\tilde{\mathbf{P}}(\mathbf{k}) = \frac{m}{\hbar} \frac{\partial H(\mathbf{k})}{\partial \mathbf{k}} = \hbar(\mathbf{k} - i\nabla) = e^{-i\mathbf{k}\cdot\mathbf{r}} \hat{\mathbf{P}} e^{i\mathbf{k}\cdot\mathbf{r}}$. We would first prove some preliminary results which we would need later on.

a. Calculation of $\langle u_{\mathbf{k}} | \tilde{\mathbf{P}}(\mathbf{k}) | u_{\mathbf{k}} \rangle$

The idea of this calculation is based on⁴.

$$\begin{aligned} \langle \tilde{\mathbf{P}}(\mathbf{k}) \rangle &= \langle u_{\mathbf{k}} | \tilde{\mathbf{P}}(\mathbf{k}) | u_{\mathbf{k}} \rangle = \frac{m}{\hbar} \langle u_{\mathbf{k}} | \frac{\partial H(\mathbf{k})}{\partial \mathbf{k}} | u_{\mathbf{k}} \rangle \\ &= \frac{m}{\hbar} \left[\langle u | \frac{\partial}{\partial \mathbf{k}} (H(\mathbf{k}) | u) \rangle - \langle u | H(\mathbf{k}) \left| \frac{\partial}{\partial \mathbf{k}} u \right. \right] \\ &= \frac{m}{\hbar} \left[\langle u | \frac{\partial}{\partial \mathbf{k}} (\varepsilon_{\mathbf{k}} | u) \rangle - \varepsilon_{\mathbf{k}} \left\langle u \left| \frac{\partial}{\partial \mathbf{k}} u \right. \right\rangle \right] \\ &= \frac{m}{\hbar} \left[\langle u | \left(\varepsilon_{\mathbf{k}} \left| \frac{\partial}{\partial \mathbf{k}} u \right. \right) \right] + \langle u | \left(\frac{\partial \varepsilon_{\mathbf{k}}}{\partial \mathbf{k}} | u \right) \rangle - \varepsilon_{\mathbf{k}} \left\langle u \left| \frac{\partial}{\partial \mathbf{k}} u \right. \right\rangle \\ &= \frac{m}{\hbar} \frac{\partial \varepsilon_{\mathbf{k}}}{\partial \mathbf{k}} \end{aligned}$$

which is just the (bare) electron mass times its velocity. Note that the Berry curvature term does not appear here because we took a single Bloch eigenstate, not an wavepacket.

b. Calculation of $\left\langle \frac{\partial}{\partial \mathbf{k}} u_{\mathbf{k}} \left| \tilde{\mathbf{P}}(\mathbf{k}) \right| u_{\mathbf{k}} \right\rangle$

This calculation is based on⁴.

$$\begin{aligned} \left\langle \frac{\partial}{\partial k_{\mu}} u_{\mathbf{k}} \left| \tilde{P}_{\nu}(\mathbf{k}) \right| u_{\mathbf{k}} \right\rangle &= \frac{m}{\hbar} \left\langle \frac{\partial}{\partial k_{\mu}} u_{\mathbf{k}} \left| \frac{\partial H(\mathbf{k})}{\partial k_{\nu}} \right| u_{\mathbf{k}} \right\rangle \\ &= \frac{m}{\hbar} \left[\left\langle \frac{\partial}{\partial k_{\mu}} u \left| \frac{\partial}{\partial k_{\nu}} (H(\mathbf{k}) | u) \right. \right\rangle - \left\langle \frac{\partial}{\partial k_{\mu}} u \left| H(\mathbf{k}) \left| \frac{\partial}{\partial k_{\nu}} u \right. \right. \right] \\ &= \frac{m}{\hbar} \left[\left\langle \frac{\partial}{\partial k_{\mu}} u \left| \frac{\partial}{\partial k_{\nu}} (\varepsilon_{\mathbf{k}} | u) \right. \right\rangle - \left\langle \frac{\partial}{\partial k_{\mu}} u \left| H(\mathbf{k}) \left| \frac{\partial}{\partial k_{\nu}} u \right. \right. \right] \\ &= \frac{m}{\hbar} \left[\left\langle \frac{\partial}{\partial k_{\mu}} u \left| \left(\varepsilon_{\mathbf{k}} \left| \frac{\partial}{\partial k_{\nu}} u \right. \right) \right. \right] + \left\langle \frac{\partial}{\partial k_{\mu}} u \left| \left(\frac{\partial \varepsilon_{\mathbf{k}}}{\partial k_{\nu}} | u \right) \right. \right\rangle - \varepsilon_{\mathbf{k}} \left\langle \frac{\partial}{\partial k_{\mu}} u \left| \frac{\partial}{\partial k_{\nu}} u \right. \right\rangle \\ &= \frac{m}{\hbar} \left[\left\langle \frac{\partial}{\partial k_{\mu}} u \left| \varepsilon_{\mathbf{k}} - H(\mathbf{k}) \left| \frac{\partial}{\partial k_{\nu}} u \right. \right. \right] + \frac{m}{\hbar} \frac{\partial \varepsilon_{\mathbf{k}}}{\partial k_{\nu}} \left\langle \frac{\partial}{\partial k_{\mu}} u \left| u \right. \right\rangle \\ &= \frac{m}{\hbar} \left[\left\langle \frac{\partial}{\partial k_{\mu}} u \left| \varepsilon_{\mathbf{k}} - H(\mathbf{k}) \left| \frac{\partial}{\partial k_{\nu}} u \right. \right. \right] + iA_{\mu}(\mathbf{k}) \langle \tilde{P}_{\nu}(\mathbf{k}) \rangle \end{aligned}$$

c. Calculation of $\mathcal{S} = \int_{\text{all space}} \langle u_{\mathbf{k}_1} | e^{-i\mathbf{k}\cdot(\hat{\mathbf{r}}-\mathbf{r}_0)} (\mathbf{r} - \mathbf{r}_0)_{\mu} \hat{\mathbf{P}}_{\nu} e^{i\mathbf{k}\cdot(\mathbf{r}-\mathbf{r}_0)} | u_{\mathbf{k}_2} \rangle_{\text{all space}}$

Notation: $\int_{\text{all space}} \langle \psi_1 | \psi_2 \rangle_{\text{all space}} = \int_{\text{all space}} d\mathbf{r} \psi_1^* \psi_2$ and $\int_{\text{cell}} \langle \psi_1 | \psi_2 \rangle_{\text{cell}} = \int_{\text{unit cell}} d\mathbf{r} \psi_1^* \psi_2$. If ψ_1, ψ_2 are periodic over unit cells, then $\int_{\text{all space}} \langle \psi_1 | \psi_2 \rangle_{\text{all space}} = N \int_{\text{cell}} \langle \psi_1 | \psi_2 \rangle_{\text{cell}}$, where N is the number of unit cells.

We use the relation, $\hat{P}(e^{i\mathbf{k}\cdot(\mathbf{r}-\mathbf{r}_0)} |u_{\mathbf{k}_2}\rangle) = e^{i\mathbf{k}\cdot(\mathbf{r}-\mathbf{r}_0)} \tilde{P}(\mathbf{k}_2) |u_{\mathbf{k}_2}\rangle$. Then,

$$\begin{aligned} \mathcal{S} &= \text{all space} \langle u_{\mathbf{k}_1, n} | e^{-i\mathbf{k}\cdot(\hat{\mathbf{r}}-\mathbf{r}_0)} (\mathbf{r}-\mathbf{r}_0)_\mu \hat{P}_\nu e^{i\mathbf{k}\cdot(\mathbf{r}-\mathbf{r}_0)} |u_{\mathbf{k}_2, n}\rangle_{\text{all space}} \\ &= \text{all space} \langle u_{\mathbf{k}_1, n} | e^{i(\mathbf{k}_2-\mathbf{k}_1)\cdot(\hat{\mathbf{r}}-\mathbf{r}_0)} (\mathbf{r}-\mathbf{r}_0)_\mu \tilde{P}_\nu(\mathbf{k}_2) |u_{\mathbf{k}_2, n}\rangle_{\text{all space}} \end{aligned}$$

Since $|u_{\mathbf{k}_2, n}\rangle$ for different values of n are eigenstates of $H(\mathbf{k}_2)$ for fixed value of \mathbf{k}_2 , they form a complete set. Then, $\mathcal{I} = \sum_n |u_{\mathbf{k}_2, n}\rangle_{\text{cell}} \langle u_{\mathbf{k}_2, n}|$, and due to periodicity, $\frac{1}{N} \sum_n |u_{\mathbf{k}_2, n}\rangle_{\text{all space}} \langle u_{\mathbf{k}_2, n}|_{\text{all space}} = \mathcal{I}$. We insert this in the expression above.

$$\begin{aligned} \mathcal{S} &= \text{all space} \langle u_{\mathbf{k}_1, n} | e^{i(\mathbf{k}_2-\mathbf{k}_1)\cdot(\hat{\mathbf{r}}-\mathbf{r}_0)} (\mathbf{r}-\mathbf{r}_0)_\mu \tilde{P}_\nu(\mathbf{k}_2) |u_{\mathbf{k}_2, n}\rangle_{\text{all space}} \\ &= \text{all space} \langle u_{\mathbf{k}_1, n} | i \left(\frac{\partial}{\partial k_{1\mu}} e^{i(\mathbf{k}_2-\mathbf{k}_1)\cdot(\mathbf{r}-\mathbf{r}_0)} \right) \tilde{P}_\nu(\mathbf{k}_2) |u_{\mathbf{k}_2, n}\rangle_{\text{all space}} \\ &= \frac{1}{N} \sum_{n'} \text{all space} \langle u_{\mathbf{k}_1, n} | i \left(\frac{\partial}{\partial k_{1\mu}} e^{i(\mathbf{k}_2-\mathbf{k}_1)\cdot(\mathbf{r}-\mathbf{r}_0)} \right) |u_{\mathbf{k}_2, n'}\rangle_{\text{all space}} \text{all space} \langle u_{\mathbf{k}_2, n'} | \tilde{P}_\nu(\mathbf{k}_2) |u_{\mathbf{k}_2, n}\rangle_{\text{all space}} \end{aligned}$$

where we used the periodicity of the Bloch wavefunctions to absorb the normalization factor. Now we would manipulate the derivative with respect to $\mathbf{k}_{1\mu}$.

$$\begin{aligned} \mathcal{S} &= \frac{i}{N} \sum_{n'} \left(\frac{\partial}{\partial k_{1\mu}} \text{all space} \langle u_{\mathbf{k}_1, n} | e^{i(\mathbf{k}_2-\mathbf{k}_1)\cdot(\mathbf{r}-\mathbf{r}_0)} \right) |u_{\mathbf{k}_2, n'}\rangle_{\text{all space}} \text{all space} \langle u_{\mathbf{k}_2, n'} | \tilde{P}_\nu(\mathbf{k}_2) |u_{\mathbf{k}_2, n}\rangle_{\text{all space}} \\ &\quad - \frac{i}{N} \sum_{n'} \text{all space} \left\langle \frac{\partial}{\partial k_{1\mu}} u_{\mathbf{k}_1, n} \left| e^{i(\mathbf{k}_2-\mathbf{k}_1)\cdot(\mathbf{r}-\mathbf{r}_0)} \right. |u_{\mathbf{k}_2, n'}\rangle_{\text{all space}} \text{all space} \langle u_{\mathbf{k}_2, n'} | \tilde{P}_\nu(\mathbf{k}_2) |u_{\mathbf{k}_2, n}\rangle_{\text{all space}} \end{aligned}$$

In the first term, we use the relation $\frac{1}{N} \text{all space} \langle u_{\mathbf{k}_2, n'} | \tilde{P}_\nu(\mathbf{k}_2) |u_{\mathbf{k}_2, n}\rangle_{\text{all space}} = \text{cell} \langle u_{\mathbf{k}_2, n'} | \tilde{P}_\nu(\mathbf{k}_2) |u_{\mathbf{k}_2, n}\rangle_{\text{cell}}$ and in the second term, we again use $\frac{1}{N} \sum_n |u_{\mathbf{k}_2, n}\rangle_{\text{all space}} \langle u_{\mathbf{k}_2, n}|_{\text{all space}} = \mathcal{I}$.

$$\begin{aligned} \mathcal{S} &= i \sum_{n'} \frac{\partial}{\partial k_{1\mu}} \left(\text{all space} \langle u_{\mathbf{k}_1, n} | e^{i(\mathbf{k}_2-\mathbf{k}_1)\cdot(\mathbf{r}-\mathbf{r}_0)} |u_{\mathbf{k}_2, n'}\rangle_{\text{all space}} \right)_{\text{cell}} \langle u_{\mathbf{k}_2, n'} | \tilde{P}_\nu(\mathbf{k}_2) |u_{\mathbf{k}_2, n}\rangle_{\text{cell}} \\ &\quad - i \text{all space} \left\langle \frac{\partial}{\partial k_{1\mu}} u_{\mathbf{k}_1, n} \left| e^{i(\mathbf{k}_2-\mathbf{k}_1)\cdot(\mathbf{r}-\mathbf{r}_0)} \tilde{P}_\nu(\mathbf{k}_2) |u_{\mathbf{k}_2, n}\rangle_{\text{all space}} \right. \right. \end{aligned}$$

When the number of sites in a lattice is very large, the points in reciprocal space are dense, and we can approximate the sum over the real space lattice sites, $\sum_{\mathbf{R}} e^{i(\mathbf{k}_1-\mathbf{k}_2)\cdot\mathbf{R}} \rightarrow \frac{1}{V_c} \int d\mathbf{r} e^{i(\mathbf{k}_1-\mathbf{k}_2)\cdot\mathbf{r}} = \frac{(2\pi)^d}{V_c} \delta(\mathbf{k}_1-\mathbf{k}_2)$, where V_c is the volume of the d dimensional unit cell. We can further write $\frac{(2\pi)^d}{V_c} = V_{\text{BZ}}$, where V_{BZ} is the volume of the 1st Brillouin zone.

For any periodic function over the unit cells,

$$\int_{\text{all space}} e^{i(\mathbf{k}_1-\mathbf{k}_2)\cdot\mathbf{r}} f(\text{periodic}) = \left(\sum_{\mathbf{R} \in \text{lattice sites}} e^{i(\mathbf{k}_1-\mathbf{k}_2)\cdot\mathbf{R}} \right) \left(\int_{\text{unit cell}} f(\text{periodic}) \right) = [V_{\text{BZ}} \delta(\mathbf{k}_1-\mathbf{k}_2)] \left(\int_{\text{unit cell}} f(\text{periodic}) \right).$$

Now we choose units such that $V_{\text{BZ}} = 1$ for the simplicity of the subsequent calculations (anyway it can always be absorbed in the normalization). We get,

$$\begin{aligned} \mathcal{S} &= i \sum_{n'} \frac{\partial}{\partial k_{1\mu}} (\delta(\mathbf{k}_1-\mathbf{k}_2))_{\text{cell}} \langle u_{\mathbf{k}_1, n} | u_{\mathbf{k}_2, n'} \rangle_{\text{cell}} \text{cell} \langle u_{\mathbf{k}_2, n'} | \tilde{P}_\nu(\mathbf{k}_2) |u_{\mathbf{k}_2, n}\rangle_{\text{cell}} \\ &\quad - i \delta(\mathbf{k}_1-\mathbf{k}_2)_{\text{cell}} \left\langle \frac{\partial}{\partial k_{1\mu}} u_{\mathbf{k}_1, n} \left| \tilde{P}_\nu(\mathbf{k}_2) |u_{\mathbf{k}_2, n}\rangle_{\text{cell}} \right. \right. \\ &= i \sum_{n'} \frac{\partial}{\partial k_{1\mu}} (\delta(\mathbf{k}_1-\mathbf{k}_2))_{\text{cell}} \langle u_{\mathbf{k}_1, n} | u_{\mathbf{k}_2, n'} \rangle_{\text{cell}} \text{cell} \langle u_{\mathbf{k}_2, n'} | \tilde{P}_\nu(\mathbf{k}_2) |u_{\mathbf{k}_2, n}\rangle_{\text{cell}} \\ &\quad + i \sum_{n'} \delta(\mathbf{k}_1-\mathbf{k}_2)_{\text{cell}} \left\langle \frac{\partial}{\partial k_{1\mu}} u_{\mathbf{k}_1, n} \left| u_{\mathbf{k}_2, n'} \right. \right. \text{cell} \langle u_{\mathbf{k}_2, n'} | \tilde{P}_\nu(\mathbf{k}_2) |u_{\mathbf{k}_2, n}\rangle_{\text{cell}} \\ &\quad - i \delta(\mathbf{k}_1-\mathbf{k}_2)_{\text{cell}} \left\langle \frac{\partial}{\partial k_{1\mu}} u_{\mathbf{k}_1, n} \left| \tilde{P}_\nu(\mathbf{k}_2) |u_{\mathbf{k}_2, n}\rangle_{\text{cell}} \right. \right. \end{aligned}$$

After summing over n' in the second term of the above expression, the second and the third terms cancel each other.

$$\begin{aligned} \mathcal{S} &= i \sum_{n'} \left[\frac{\partial}{\partial k_{1\mu}} \delta(\mathbf{k}_1 - \mathbf{k}_2) \right]_{\text{cell}} \langle u_{\mathbf{k}_1, n'} | u_{\mathbf{k}_2, n'} \rangle_{\text{cell}} \text{cell} \langle u_{\mathbf{k}_2, n'} | \tilde{\mathbf{P}}_\nu(\mathbf{k}_2) | u_{\mathbf{k}_2, n} \rangle_{\text{cell}} \\ &= \boxed{i \left[\frac{\partial}{\partial k_{1\mu}} \delta(\mathbf{k}_1 - \mathbf{k}_2) \right]_{\text{cell}} \langle u_{\mathbf{k}_1, n} | \tilde{\mathbf{P}}_\nu(\mathbf{k}_2) | u_{\mathbf{k}_2, n} \rangle_{\text{cell}}} \end{aligned}$$

d. To show that $\langle \psi_{\mathbf{k}, \mathbf{r}_0} | \{(\hat{\mathbf{r}} - \mathbf{r}_0)_\mu, \hat{P}_\nu\} | \psi_{\mathbf{k}, \mathbf{r}_0} \rangle$ is antisymmetric in μ, ν for a Bloch wavepacket $\psi_{\mathbf{k}, \mathbf{r}_0}$, which implies \mathcal{M}_{ij} is totally antisymmetric

It is mentioned in Ref.⁴⁰ that $\mathcal{M}_{\mu\nu} = \langle \psi_{\mathbf{k}, \mathbf{r}_0} | \frac{1}{2} \{(\mathbf{r} - \mathbf{r}_0)_\mu, \hat{P}_\nu\} | \psi_{\mathbf{k}, \mathbf{r}_0} \rangle$ is a completely antisymmetric tensor. Here we prove it. A similar calculation to find the orbital angular momentum of a wavepacket can be found at Appendix B of Ref.⁴. First we calculate the quantity without the anticommutator.

$$\begin{aligned} &\langle \psi_{\mathbf{k}, \mathbf{r}_0} | (\mathbf{r} - \mathbf{r}_0)_\mu \hat{P}_\nu | \psi_{\mathbf{k}, \mathbf{r}_0} \rangle \\ &= \int \int d\mathbf{k}_1 d\mathbf{k}_2 w(\mathbf{k}_1 - \mathbf{k}) w(\mathbf{k}_2 - \mathbf{k}) e^{-i\mathbf{A}(\mathbf{k}) \cdot (\mathbf{k}_1 - \mathbf{k})} e^{i\mathbf{A}(\mathbf{k}) \cdot (\mathbf{k}_2 - \mathbf{k})} \\ &\quad \times \text{all space} \langle u_{\mathbf{k}_1} | e^{-i\mathbf{k} \cdot (\hat{\mathbf{r}} - \mathbf{r}_0)} (\mathbf{r} - \mathbf{r}_0)_\mu \hat{P}_\nu e^{i\mathbf{k} \cdot (\mathbf{r} - \mathbf{r}_0)} | u_{\mathbf{k}_2} \rangle_{\text{all space}} \end{aligned}$$

Now we use the boxed result from the previous section,

$$\begin{aligned} &= \int \int d\mathbf{k}_1 d\mathbf{k}_2 w(\mathbf{k}_1 - \mathbf{k}) w(\mathbf{k}_2 - \mathbf{k}) e^{-i\mathbf{A}(\mathbf{k}) \cdot (\mathbf{k}_1 - \mathbf{k})} e^{i\mathbf{A}(\mathbf{k}) \cdot (\mathbf{k}_2 - \mathbf{k})} \\ &\quad \times i \left[\frac{\partial}{\partial k_{1\mu}} \delta(\mathbf{k}_1 - \mathbf{k}_2) \right]_{\text{cell}} \langle u_{\mathbf{k}_1, n} | \tilde{\mathbf{P}}_\nu(\mathbf{k}_2) | u_{\mathbf{k}_2, n} \rangle_{\text{cell}} \end{aligned}$$

After integrating by parts to shift the derivative from the delta function to the other quantities,

$$\begin{aligned} &= \int \int d\mathbf{k}_1 d\mathbf{k}_2 w(\mathbf{k}_1 - \mathbf{k}) w(\mathbf{k}_2 - \mathbf{k}_0) e^{-i\mathbf{A}(\mathbf{k}) \cdot (\mathbf{k}_1 - \mathbf{k})} e^{i\mathbf{A}(\mathbf{k}) \cdot (\mathbf{k}_2 - \mathbf{k})} \\ &\quad \times i \left[\frac{\partial}{\partial k_{1\mu}} \delta(\mathbf{k}_1 - \mathbf{k}_2) \right]_{\text{cell}} \langle u_{\mathbf{k}_1, n} | \tilde{\mathbf{P}}_\nu(\mathbf{k}_2) | u_{\mathbf{k}_2, n} \rangle_{\text{cell}} \\ &= -i \int \int d\mathbf{k}_1 d\mathbf{k}_2 w(\mathbf{k}_1 - \mathbf{k}) w(\mathbf{k}_2 - \mathbf{k}) e^{-i\mathbf{A}(\mathbf{k}_0) \cdot (\mathbf{k}_1 - \mathbf{k}_0)} e^{i\mathbf{A}(\mathbf{k}) \cdot (\mathbf{k}_2 - \mathbf{k})} \\ &\quad \times \delta(\mathbf{k}_1 - \mathbf{k}_2) \left[\text{cell} \left\langle \frac{\partial}{\partial k_{1\mu}} u_{\mathbf{k}_1, n} \middle| \tilde{\mathbf{P}}_\nu(\mathbf{k}_2) \middle| u_{\mathbf{k}_2, n} \right\rangle_{\text{cell}} - i\mathbf{A}_\mu(\mathbf{k}) \text{cell} \langle u_{\mathbf{k}_1, n} | \tilde{\mathbf{P}}_\nu(\mathbf{k}_2) | u_{\mathbf{k}_2, n} \rangle_{\text{cell}} \right] \end{aligned}$$

Integrating over the delta function, and using the result $\text{cell} \left\langle \frac{\partial}{\partial k_{1\mu}} u_{\mathbf{k}_1, n} \middle| \tilde{\mathbf{P}}_\nu(\mathbf{k}_1) \middle| u_{\mathbf{k}_1, n} \right\rangle_{\text{cell}} = \frac{m}{\hbar} \left[\left\langle \frac{\partial}{\partial k_{1\mu}} u \middle| \varepsilon_{\mathbf{k}_1} - H(\mathbf{k}_1) \middle| \frac{\partial}{\partial k_{1\nu}} u \right\rangle \right] + i\mathbf{A}_\mu(\mathbf{k}_1) \langle P_\nu(\mathbf{k}_1) \rangle$ from the previous section, we get,

$$\begin{aligned} &-i \int d\mathbf{k}_1 [w(\mathbf{k}_1 - \mathbf{k})]^2 \frac{m}{\hbar} \left[\left\langle \frac{\partial}{\partial k_{1\mu}} u \middle| \varepsilon_{\mathbf{k}_1} - H(\mathbf{k}_1) \middle| \frac{\partial}{\partial k_{1\nu}} u \right\rangle \right] \\ &= \boxed{-i \frac{m}{\hbar} \left[\left\langle \frac{\partial}{\partial k_\mu} u \middle| \varepsilon_{\mathbf{k}} - H(\mathbf{k}) \middle| \frac{\partial}{\partial k_\nu} u \right\rangle \right]} \end{aligned}$$

The last line follows because $w(\mathbf{k}_1 - \mathbf{k})$ being sharply peaked at $\mathbf{k}_1 = \mathbf{k}$, picks up the value of the integrand at that point, and due to normalization of $\psi(\mathbf{r})_{n, \mathbf{k}}$ in Eq. (C1), $\int d\mathbf{k}_1 [w(\mathbf{k}_1 - \mathbf{k})]^2 = 1$ (In other words, $[w(\mathbf{k}_1 - \mathbf{k})]^2$ effectively behaves like $\delta(\mathbf{k}_1 - \mathbf{k})$).

Case: $\mu \neq \nu$.

In this case, $(\mathbf{r} - \mathbf{r}_0)_\mu \hat{P}_\nu$ Hermitian (because $(\mathbf{r} - \mathbf{r}_0)_\mu$ and \hat{P}_ν commute, and they are individually Hermitian), and its expectation value must be real. Then, $\left\langle \frac{\partial}{\partial k_\mu} u \middle| \varepsilon_{\mathbf{k}} - H(\mathbf{k}) \middle| \frac{\partial}{\partial k_\nu} u \right\rangle = \frac{i\hbar}{m} \langle \psi_{\mathbf{k}, \mathbf{r}_0} | \{(\mathbf{r} - \mathbf{r}_0)_\mu \hat{P}_\nu\} | \psi_{\mathbf{k}, \mathbf{r}_0} \rangle$ must be purely imaginary.

Now, $\varepsilon_{\mathbf{k}} - H(\mathbf{k})$ is Hermitian. Then, $\left\langle \frac{\partial}{\partial k_{\mu}} u \left| \varepsilon_{\mathbf{k}} - H(\mathbf{k}) \right| \frac{\partial}{\partial k_{\nu}} u \right\rangle^* = \left\langle \frac{\partial}{\partial k_{\nu}} u \left| \varepsilon_{\mathbf{k}} - H(\mathbf{k}) \right| \frac{\partial}{\partial k_{\mu}} u \right\rangle$.

But since this is purely imaginary, $\left\langle \frac{\partial}{\partial k_{\mu}} u \left| \varepsilon_{\mathbf{k}} - H(\mathbf{k}) \right| \frac{\partial}{\partial k_{\nu}} u \right\rangle^* = -\left\langle \frac{\partial}{\partial k_{\mu}} u \left| \varepsilon_{\mathbf{k}} - H(\mathbf{k}) \right| \frac{\partial}{\partial k_{\nu}} u \right\rangle$.

Combining the two, we get, $\left\langle \frac{\partial}{\partial k_{\mu}} u \left| \varepsilon_{\mathbf{k}} - H(\mathbf{k}) \right| \frac{\partial}{\partial k_{\nu}} u \right\rangle = -\left\langle \frac{\partial}{\partial k_{\nu}} u \left| \varepsilon_{\mathbf{k}} - H(\mathbf{k}) \right| \frac{\partial}{\partial k_{\mu}} u \right\rangle$.

Also, since $(\mathbf{r} - \mathbf{r}_0)_{\mu}$ and \hat{P}_{ν} commute, $(\mathbf{r} - \mathbf{r}_0)_{\mu} \hat{P}_{\nu} = \frac{1}{2} \{(\mathbf{r} - \mathbf{r}_0)_{\mu}, \hat{P}_{\nu}\}$.

Consequently, for $\mu \neq \nu$, $\langle \psi_{\mathbf{k}, \mathbf{r}_0} | \frac{1}{2} \{(\mathbf{r} - \mathbf{r}_0)_{\mu}, \hat{P}_{\nu}\} | \psi_{\mathbf{k}, \mathbf{r}_0} \rangle = -\langle \psi_{\mathbf{k}, \mathbf{r}_0} | \frac{1}{2} \{(\mathbf{r} - \mathbf{r}_0)_{\nu}, \hat{P}_{\mu}\} | \psi_{\mathbf{k}, \mathbf{r}_0} \rangle$, i.e., $\boxed{\mathcal{M}_{\mu\nu} = -\mathcal{M}_{\nu\mu}}$.

Case: $\mu = \nu$. In this subsection, no sum is implied for repeated indices

In this case, $(\mathbf{r} - \mathbf{r}_0)_{\mu} \hat{P}_{\mu}$ is not anymore Hermitian. However, $\left[\left\langle \frac{\partial}{\partial k_{\mu}} u \left| \varepsilon_{\mathbf{k}} - H(\mathbf{k}) \right| \frac{\partial}{\partial k_{\mu}} u \right\rangle \right]$ must be real. Consequently, $-i \frac{m}{\hbar} \left[\left\langle \frac{\partial}{\partial k_{\mu}} u \left| \varepsilon_{\mathbf{k}} - H(\mathbf{k}) \right| \frac{\partial}{\partial k_{\mu}} u \right\rangle \right] = \langle (\mathbf{r} - \mathbf{r}_0)_{\mu} \hat{P}_{\mu} \rangle$ is purely imaginary, say, iy . Then, $\langle \hat{P}_{\mu} (\mathbf{r} - \mathbf{r}_0)_{\mu} \rangle = -iy$, and

$$\langle (\mathbf{r} - \mathbf{r}_0)_{\mu} \hat{P}_{\mu} + \hat{P}_{\mu} (\mathbf{r} - \mathbf{r}_0)_{\mu} \rangle = 0.$$

Therefore, $\boxed{\mathcal{M}_{\mu\mu} = 0}$ for all μ .

Note: Since we know that $\langle (\mathbf{r} - \mathbf{r}_0)_{\mu} \hat{P}_{\mu} \rangle$ is purely imaginary, and also, $[(\mathbf{r} - \mathbf{r}_0)_{\mu} \hat{P}_{\mu} - \hat{P}_{\mu} (\mathbf{r} - \mathbf{r}_0)_{\mu}] = i\hbar$, it follows that $\langle (\mathbf{r} - \mathbf{r}_0)_{\mu} \hat{P}_{\mu} \rangle = \frac{i\hbar}{2}$.

Therefore, \mathcal{M} is a *completely antisymmetric* tensor.

2. $\tilde{m}_i = \frac{1}{2} \mathcal{M}_{jk} \epsilon_{ijk}$ is identical to the magnetic moment defined in Eq. (5)

Since only the $j \neq k$ terms contribute in $\mathcal{M}_{jk} \epsilon_{ijk}$, and \hat{p}_k commutes with \hat{r}_j for $j \neq k$, we can get rid of the anticommutator,

$$\begin{aligned} \tilde{m}_i &= \frac{1}{2} \langle \psi_{\mathbf{k}, \mathbf{r}_0} | \frac{1}{2} \{ -e \frac{\hat{p}_k}{m}, (\hat{\mathbf{r}} - \mathbf{r}_0)_j \} | \psi_{\mathbf{k}, \mathbf{r}_0} \rangle \epsilon_{ijk} = -\frac{e}{2m} \epsilon_{ijk} \langle \psi_{\mathbf{k}, \mathbf{r}_0} | (\hat{\mathbf{r}} - \mathbf{r}_0)_j \hat{p}_k | \psi_{\mathbf{k}, \mathbf{r}_0} \rangle \\ &= -\frac{e}{2m} \langle \psi_{\mathbf{k}, \mathbf{r}_0} | ((\hat{\mathbf{r}} - \mathbf{r}_0) \times \hat{\mathbf{p}})_i | \psi_{\mathbf{k}, \mathbf{r}_0} \rangle \end{aligned}$$

which is the i -th component of magnetic moment $\mathbf{m}_{\mathbf{k}}$, defined in Eq. (5), that is, $\tilde{m}_i = m_i$.

Appendix E: Derivation of the transport electric current density and derivation of the charge magnetization

The total electric current is,

$$\begin{aligned} \mathbf{j}_{\text{total}}^e &= -e \int \frac{2d\mathbf{k}}{(2\pi)^d} \left[g_{\mathbf{k}} \frac{1}{\hbar} \frac{\partial \varepsilon_0(\mathbf{k})}{\partial \mathbf{k}} + f_{\mathbf{k}} \frac{e}{\hbar} (\mathbf{E} \times \boldsymbol{\Omega}(\mathbf{k})) \right] \\ &\quad + \boldsymbol{\nabla} \times \int \frac{2d\mathbf{k}}{(2\pi)^d} f_{\mathbf{k}} \mathbf{m}_{\mathbf{k}} \\ &= -e \int \frac{2d\mathbf{k}}{(2\pi)^d} \left[g_{\mathbf{k}} \frac{1}{\hbar} \frac{\partial \varepsilon_0(\mathbf{k})}{\partial \mathbf{k}} + f_{\mathbf{k}} \frac{e}{\hbar} (\mathbf{E} \times \boldsymbol{\Omega}(\mathbf{k})) \right] \\ &\quad + \boldsymbol{\nabla} \mu \times \int \frac{2d\mathbf{k}}{(2\pi)^d} \frac{\partial f_{\mathbf{k}}}{\partial \mu} \mathbf{m}_{\mathbf{k}} + \boldsymbol{\nabla} T \times \int \frac{2d\mathbf{k}}{(2\pi)^d} \frac{\partial f_{\mathbf{k}}}{\partial T} \mathbf{m}_{\mathbf{k}} \end{aligned} \tag{E1}$$

The electric magnetization current is,

$$\mathbf{j}_M^e = \boldsymbol{\nabla} \times \mathbf{M}^e = \boldsymbol{\nabla} \mu \times \frac{\partial \mathbf{M}^e}{\partial \mu} + \boldsymbol{\nabla} T \times \frac{\partial \mathbf{M}^e}{\partial T} \tag{E2}$$

The electric transport current is,

$$\begin{aligned}
\mathbf{j}_{\text{transport}}^e &= \mathbf{j}_{\text{total}}^e - \mathbf{j}_M^e \\
&= -e \int \frac{2d\mathbf{k}}{(2\pi)^d} \left[g_{\mathbf{k}} \frac{1}{\hbar} \frac{\partial \varepsilon_0(\mathbf{k})}{\partial \mathbf{k}} + f_{\mathbf{k}} \frac{e}{\hbar} (\mathbf{E} \times \boldsymbol{\Omega}(\mathbf{k})) \right] \\
&\quad + \boldsymbol{\nabla} \mu \times \int \frac{2d\mathbf{k}}{(2\pi)^d} \frac{\partial f_{\mathbf{k}}}{\partial \mu} \mathbf{m}_{\mathbf{k}} + \boldsymbol{\nabla} T \times \int \frac{2d\mathbf{k}}{(2\pi)^d} \frac{\partial f_{\mathbf{k}}}{\partial T} \mathbf{m}_{\mathbf{k}} \\
&\quad - \boldsymbol{\nabla} \mu \times \frac{\partial M^e}{\partial \mu} - \boldsymbol{\nabla} T \times \frac{\partial M^e}{\partial T}
\end{aligned} \tag{E3}$$

It is shown in section IV that $g_{\mathbf{k}}$ is already a function of $(e\mathbf{E} + \boldsymbol{\nabla} \mu)$. Then, for the Einstein relation to hold for the electric transport current,

$$\frac{\partial M^e}{\partial \mu} = \int \frac{2d\mathbf{k}}{(2\pi)^d} \frac{\partial f_{\mathbf{k}}}{\partial \mu} \mathbf{m}_{\mathbf{k}} + \int \frac{2d\mathbf{k}}{(2\pi)^d} f_{\mathbf{k}} \frac{e}{\hbar} \boldsymbol{\Omega}(\mathbf{k}).$$

Integrating,

$$M^e = \int \frac{2d\mathbf{k}}{(2\pi)^d} \left[\mathbf{m}(\mathbf{k}) f_{\mathbf{k}} + k_B T \frac{e\boldsymbol{\Omega}}{\hbar} \log\left(1 + e^{-\beta(\varepsilon_0(\mathbf{k}) - \mu)}\right) + \mathbf{c}(\mathbf{k}, T) \right],$$

where $\mathbf{c}(\mathbf{k}, T)$ is a μ -independent function. Now, the magnetization should be zero for an empty band, i.e., at any temperature, $M^e \rightarrow 0$ as $\mu \rightarrow -\infty$. Applying this condition, we get $\mathbf{c}(\mathbf{k}, T) = 0$.

Appendix F: Derivation of transport heat current density

Since the energy magnetization M_0^E is a function of the temperature T and the chemical potential μ , it follows from Eq. (9) that the magnetization energy current is,

$$\begin{aligned}
\mathbf{j}_M^E &= \boldsymbol{\nabla} \mu \times \frac{\partial M_0^E}{\partial \mu} + \boldsymbol{\nabla} T \times \frac{\partial M_0^E}{\partial T} - \mathbf{E} \times M^e \\
&= \boldsymbol{\nabla} \mu \times \frac{\partial M_0^E}{\partial \mu} + \boldsymbol{\nabla} T \times \frac{\partial M_0^E}{\partial T} \\
&\quad - \mathbf{E} \times \int \frac{2d\mathbf{k}}{(2\pi)^d} \left[\mathbf{m}(\mathbf{k}) f_{\mathbf{k}} + k_B T \frac{e\boldsymbol{\Omega}}{\hbar} \log\left(1 + e^{-\beta(\varepsilon_0(\mathbf{k}) - \mu)}\right) \right]
\end{aligned}$$

Then, the transport energy current density is,

$$\begin{aligned}
\mathbf{j}_{\text{transport}}^E &= \mathbf{j}_{\text{total}}^E - \mathbf{j}_M^E \\
&= \int \frac{2d\mathbf{k}}{(2\pi)^d} \varepsilon_0(\mathbf{k}) \left[g_{\mathbf{k}} \frac{1}{\hbar} \frac{\partial \varepsilon_0(\mathbf{k})}{\partial \mathbf{k}} + \frac{e}{\hbar} f_{\mathbf{k}} (\mathbf{E} \times \boldsymbol{\Omega}(\mathbf{k})) \right] \\
&\quad + \mathbf{E} \times \int \frac{2d\mathbf{k}}{(2\pi)^d} k_B T \frac{e\boldsymbol{\Omega}}{\hbar} \log\left(1 + e^{-\beta(\varepsilon_0(\mathbf{k}) - \mu)}\right) \\
&\quad - \boldsymbol{\nabla} \mu \times \frac{\partial}{\partial \mu} \int \frac{2d\mathbf{k}}{(2\pi)^d} \varepsilon_0(\mathbf{k}) f_{\mathbf{k}} \left(\frac{\mathbf{m}_{\mathbf{k}}}{e} \right) \\
&\quad - \boldsymbol{\nabla} T \times \frac{\partial}{\partial T} \int \frac{2d\mathbf{k}}{(2\pi)^d} \varepsilon_0(\mathbf{k}) f_{\mathbf{k}} \left(\frac{\mathbf{m}_{\mathbf{k}}}{e} \right) \\
&\quad - \boldsymbol{\nabla} \mu \times \frac{\partial M_0^E}{\partial \mu} - \boldsymbol{\nabla} T \times \frac{\partial M_0^E}{\partial T}
\end{aligned} \tag{F1}$$

Substituting the expression of the bare energy magnetization,

$$M_0^E = \sum_n \left[\int \frac{2d\mathbf{k}}{(2\pi)^d} \varepsilon_0(\mathbf{k}) f_{n\mathbf{k}} \left(\frac{\mathbf{m}_{\mathbf{k}}}{-e} \right) - \int \frac{2d\mathbf{k}}{(2\pi)^d} \frac{\boldsymbol{\Omega}_n(\mathbf{k})}{\hbar} \int_{\tilde{\mu}=-\infty}^{\mu} d\tilde{\mu} \left\{ \varepsilon_{0,n}(\mathbf{k}) f_{n\mathbf{k}}(\tilde{\mu}) + k_B T \log\left(1 + e^{-\beta(\varepsilon_{0,n}(\mathbf{k}) - \tilde{\mu})}\right) \right\} \right],$$

we get,

$$\begin{aligned}
\mathbf{j}_{\text{transport}}^E &= \int \frac{2d\mathbf{k}}{(2\pi)^d} \varepsilon_0(\mathbf{k}) g_{\mathbf{k}} \frac{1}{\hbar} \frac{\partial \varepsilon_0(\mathbf{k})}{\partial \mathbf{k}} \\
&+ (e\mathbf{E} + \nabla\mu) \times \int \frac{2d\mathbf{k}}{(2\pi)^d} \frac{\boldsymbol{\Omega}}{\hbar} \left(\varepsilon_0(\mathbf{k}) f_{\mathbf{k}} + k_B T \log\left(1 + e^{-\beta(\varepsilon_0(\mathbf{k}) - \mu)}\right) \right) \\
&+ \nabla T \times \frac{\partial}{\partial T} \int \frac{2d\mathbf{k}}{(2\pi)^d} \frac{\boldsymbol{\Omega}}{\hbar} \int_{\tilde{\mu}=-\infty}^{\mu} \left(\varepsilon_0(\mathbf{k}) f_{\mathbf{k}}(\tilde{\mu}) + k_B T \log\left(1 + e^{-\beta(\varepsilon_0(\mathbf{k}) - \tilde{\mu})}\right) \right)
\end{aligned} \tag{F2}$$

The charge magnetization has been shown to be^{58,69}, $M^e = \frac{1}{\beta} \int \frac{2d\mathbf{k}}{(2\pi)^d} \frac{e}{\hbar} \boldsymbol{\Omega}(\mathbf{k}) \log\left(1 + e^{-\beta(\varepsilon_0(\mathbf{k}) - \mu)}\right) + \int \frac{2d\mathbf{k}}{(2\pi)^d} f_{\mathbf{k}} \mathbf{m}_{\mathbf{k}}$, and the corresponding circulating magnetization electric current is,

$$\begin{aligned}
\mathbf{j}_M^e &= \nabla \times M^e \\
&= \nabla \times \int \frac{2d\mathbf{k}}{(2\pi)^d} f_{\mathbf{k}} \mathbf{m}_{\mathbf{k}} + \nabla\mu \times \int \frac{2d\mathbf{k}}{(2\pi)^d} \frac{e}{\hbar} \boldsymbol{\Omega}(\mathbf{k}) f_{\mathbf{k}} + \frac{\nabla T}{T} \times \int \frac{2d\mathbf{k}}{(2\pi)^d} \frac{e}{\hbar} \boldsymbol{\Omega}(\mathbf{k}) f_{\mathbf{k}} (\varepsilon_0(\mathbf{k}) - \mu) \\
&+ \frac{\nabla T}{T} \times \int \frac{2d\mathbf{k}}{(2\pi)^d} \frac{e}{\hbar} \boldsymbol{\Omega}(\mathbf{k}) k_B T \log\left(1 + e^{-\beta(\varepsilon_0(\mathbf{k}) - \mu)}\right)
\end{aligned}$$

The electric transport current is⁵⁸,

$$\begin{aligned}
\mathbf{j}_{\text{transport}}^e &= \int \frac{2d\mathbf{k}}{(2\pi)^d} (-e) g_{\mathbf{k}} \frac{1}{\hbar} \frac{\partial \varepsilon_0(\mathbf{k})}{\partial \mathbf{k}} - f_{\mathbf{k}} \frac{e^2}{\hbar} \left(\left[\mathbf{E} + \frac{\nabla\mu}{e} \right] \times \boldsymbol{\Omega}(\mathbf{k}) \right) \\
&- \frac{\nabla T}{T} \times \int \frac{2d\mathbf{k}}{(2\pi)^d} \frac{e}{\hbar} \boldsymbol{\Omega}(\mathbf{k}) \left[f_{\mathbf{k}} (\varepsilon_0(\mathbf{k}) - \mu) + k_B T \log\left(1 + e^{-\beta(\varepsilon_0(\mathbf{k}) - \mu)}\right) \right] \\
&= \int \frac{2d\mathbf{k}}{(2\pi)^d} (-e) g_{\mathbf{k}} \frac{1}{\hbar} \frac{\partial \varepsilon_0(\mathbf{k})}{\partial \mathbf{k}} - f_{\mathbf{k}} \frac{e^2}{\hbar} \left(\left[\mathbf{E} + \frac{\nabla\mu}{e} \right] \times \boldsymbol{\Omega}(\mathbf{k}) \right) \\
&- \nabla T \times \frac{\partial}{\partial T} \int \frac{2d\mathbf{k}}{(2\pi)^d} \frac{e}{\hbar} \boldsymbol{\Omega}(\mathbf{k}) \left[k_B T \log\left(1 + e^{-\beta(\varepsilon_0(\mathbf{k}) - \mu)}\right) \right]
\end{aligned}$$

The number density transport current is $\mathbf{j}_{\text{transport}}^N = \frac{\mathbf{j}_{\text{transport}}^e}{-e}$, and the full expression for the transport heat current density (Eq. (15b)) is,

$$\begin{aligned}
\mathbf{j}_{\text{transport}}^Q &= \mathbf{j}_{\text{transport}}^E - \mu \mathbf{j}_{\text{transport}}^N \\
&= \int \frac{2d\mathbf{k}}{(2\pi)^d} (\varepsilon_0(\mathbf{k}) - \mu) \frac{1}{\hbar} \frac{\partial \varepsilon_0(\mathbf{k})}{\partial \mathbf{k}} g_{\mathbf{k}} \\
&+ (e\mathbf{E} + \nabla\mu) \times \int \frac{2d\mathbf{k}}{(2\pi)^d} \frac{\boldsymbol{\Omega}}{\hbar} \left(\varepsilon_0(\mathbf{k}) f_{\mathbf{k}} + k_B T \log\left(1 + e^{-\beta(\varepsilon_0(\mathbf{k}) - \mu)}\right) \right) \\
&+ \nabla T \times \frac{\partial}{\partial T} \int \frac{2d\mathbf{k}}{(2\pi)^d} \frac{\boldsymbol{\Omega}}{\hbar} \left[\left\{ \int_{\tilde{\mu}=-\infty}^{\mu} \left(\varepsilon_0(\mathbf{k}) f_{\mathbf{k}}(\tilde{\mu}) + k_B T \log\left(1 + e^{-\beta(\varepsilon_0(\mathbf{k}) - \tilde{\mu})}\right) \right) \right\} - \mu k_B T \log\left(1 + e^{-\beta(\varepsilon_0(\mathbf{k}) - \mu)}\right) \right]
\end{aligned}$$

Appendix G: Simplification of the condition on energy magnetization at low temperature

At very low temperature (in the limit $\beta\mu \gg 1$), for $|\mathbf{k}| < k_f$, we have $f_{\mathbf{k}} \approx 1$, and $\log\left(1 + e^{-\beta(\varepsilon_0(\mathbf{k}) - \mu)}\right) \approx \log\left(e^{-\beta(\varepsilon_0(\mathbf{k}) - \mu)}\right) = \beta(\mu - \varepsilon_0(\mathbf{k}))$.

Then, $\varepsilon_0(\mathbf{k}) f_{\mathbf{k}} + k_B T \log\left(1 + e^{-\beta(\varepsilon_0(\mathbf{k}) - \mu)}\right) \approx \mu$.

And for $|\mathbf{k}| > k_f$, $f_{\mathbf{k}} \approx e^{-\beta(\varepsilon_0(\mathbf{k}) - \mu)} \ll 1$, and $\log\left(1 + e^{-\beta(\varepsilon_0(\mathbf{k}) - \mu)}\right) \approx e^{-\beta(\varepsilon_0(\mathbf{k}) - \mu)} \ll 1$. Then, the quantity $[\varepsilon_0(\mathbf{k}) f_{\mathbf{k}} + k_B T \log\left(1 + e^{-\beta(\varepsilon_0(\mathbf{k}) - \mu)}\right)]$ is negligibly small compared to μ , and it can be neglected.

Combining both the relations, we can write

$$\varepsilon_0(\mathbf{k}) f_{\mathbf{k}} + k_B T \log\left(1 + e^{-\beta(\varepsilon_0(\mathbf{k}) - \mu)}\right) \approx \mu \Theta(\mu - \varepsilon_0(\mathbf{k})) \approx \mu f_{\mathbf{k}},$$

where Θ is the Heaviside step function.

Also, at very low temperatures, $\frac{\partial f_{\mathbf{k}}}{\partial \mu} \approx \delta(\varepsilon_0(\mathbf{k}) - \mu)$.

Appendix H: Discussion about the absolute value of the chemical potential in the expression of the circulating energy current at the edge

Note that the condition on the energy magnetization (Eq. (12)) depends on the absolute value of the chemical potential (not something like its relative value with respect to the minima of the band). However, this is not unphysical. When we change the chemical potential by a small amount (i.e. $|\frac{\Delta\mu}{\mu-\varepsilon_{\min}}| \ll 1$), new electrons are added to the system, and they have energy in the order of μ . Even if these newly added electrons belong to a bulk state (i.e., not a chiral edge state), the circulating energy currents due to these bulk states (which cancel in the bulk) would contribute to the change in the energy current circulating in the edges, and this change is in the order of (the absolute value of) μ , and the net contribution is, as if, only chiral edge states are contributing to the circulating current (A similar result holds for the circulating electric current⁷⁴). For example, if the chemical potential is at zero energy (then the band minima would be at some negative energy), and new electrons are added to the system, they would have zero energy, and the circulating energy current at the edges would not change, a result which agrees with Eq. (13).

Appendix I: Calculations for the Boltzmann Transport Equation

In this appendix, the subscripts \mathbf{k} of ε , g and τ are not explicitly written. It is to be understood that they are functions of the crystal momentum.

1. Simplification of RHS of Eq. (16)

Since $f = \frac{1}{e^{\beta(\varepsilon-\mu)}+1}$, it follows that $\frac{\partial f}{\partial \mathbf{r}} = \frac{\partial f}{\partial \varepsilon} [-\frac{\nabla T}{T}(\varepsilon - \mu) - \nabla \mu]$, and $\frac{\partial f}{\partial \mathbf{k}} = \frac{\partial f}{\partial \varepsilon} \frac{\partial \varepsilon}{\partial \mathbf{k}}$. Using $\dot{\mathbf{r}} = \frac{\frac{1}{\hbar} \frac{\partial \varepsilon}{\partial \mathbf{k}} + \frac{e}{\hbar} (\mathbf{E} \times \boldsymbol{\Omega})}{1 + \frac{e}{\hbar} \mathbf{B} \cdot \boldsymbol{\Omega}}$, and $\dot{\mathbf{k}} = -\frac{\frac{e}{\hbar} \mathbf{E} + \frac{e}{\hbar^2} \frac{\partial \varepsilon}{\partial \mathbf{k}} \times \mathbf{B}}{1 + \frac{e}{\hbar} \mathbf{B} \cdot \boldsymbol{\Omega}}$, we now calculate $\dot{\mathbf{r}} \cdot \frac{\partial}{\partial \mathbf{r}} f + \dot{\mathbf{k}} \cdot \frac{\partial}{\partial \mathbf{k}} f$. Here, $\frac{\partial f}{\partial \mathbf{r}}$ is linear in external fields, and $\dot{\mathbf{r}}$ has a term $\mathbf{E} \times \boldsymbol{\Omega}$, and we neglect the product of these terms, which is a second order quantity.

Then we get, $-\dot{\mathbf{r}} \cdot \frac{\partial}{\partial \mathbf{r}} f - \dot{\mathbf{k}} \cdot \frac{\partial}{\partial \mathbf{k}} f = \frac{1}{1 + \frac{e}{\hbar} \mathbf{B} \cdot \boldsymbol{\Omega}} \frac{1}{\hbar} \frac{\partial \varepsilon}{\partial \mathbf{k}} \cdot [e\mathbf{E} + \nabla \mu + \frac{\nabla T}{T}(\varepsilon - \mu)]$.

2. Solution of the BTE for $\mathbf{E} \neq 0$, $\nabla \mu = \nabla T = 0$

In this case, the equation becomes,

$$\frac{g}{\tau} - \frac{\frac{e}{\hbar^2} \frac{\partial \varepsilon}{\partial \mathbf{k}}}{1 + \frac{e}{\hbar} \mathbf{B} \cdot \boldsymbol{\Omega}} \times \mathbf{B} \cdot \frac{\partial}{\partial \mathbf{k}} g = \frac{\partial f}{\partial \varepsilon} \frac{1}{1 + \frac{e}{\hbar} \mathbf{B} \cdot \boldsymbol{\Omega}} \frac{1}{\hbar} \frac{\partial \varepsilon}{\partial \mathbf{k}} \cdot e\mathbf{E} \quad (11)$$

We solve this equation, treating the second term in LHS as a perturbation (See Appendix J for justification). We write $g = g_0 + g_1$, such that $\frac{g_0}{\tau} = \frac{\partial f}{\partial \varepsilon} \frac{1}{1 + \frac{e}{\hbar} \mathbf{B} \cdot \boldsymbol{\Omega}} \frac{1}{\hbar} \frac{\partial \varepsilon}{\partial \mathbf{k}} \cdot e\mathbf{E}$, and $\frac{g_1}{\tau} - \frac{\frac{e}{\hbar^2} \frac{\partial \varepsilon}{\partial \mathbf{k}}}{1 + \frac{e}{\hbar} \mathbf{B} \cdot \boldsymbol{\Omega}} \times \mathbf{B} \cdot \frac{\partial}{\partial \mathbf{k}} g_0 = 0$. Then, g_1 is a linear function of \mathbf{B} , and it is justified to discard the term $\frac{\frac{e}{\hbar^2} \frac{\partial \varepsilon}{\partial \mathbf{k}}}{1 + \frac{e}{\hbar} \mathbf{B} \cdot \boldsymbol{\Omega}} \times \mathbf{B} \cdot \frac{\partial}{\partial \mathbf{k}} g_1$, as it would be quadratic in \mathbf{B} .

Then, $g_0 = \frac{\partial f}{\partial \varepsilon} \frac{1}{1 + \frac{e}{\hbar} \mathbf{B} \cdot \boldsymbol{\Omega}} \frac{e\tau}{\hbar} \frac{\partial \varepsilon}{\partial \mathbf{k}} \cdot \mathbf{E}$. To find g_1 , we need to calculate $\frac{\partial g_0}{\partial \mathbf{k}}$, i.e., the quantity $\frac{\partial}{\partial \mathbf{k}} \left[\frac{\partial f}{\partial \varepsilon} \frac{1}{1 + \frac{e}{\hbar} \mathbf{B} \cdot \boldsymbol{\Omega}} \frac{e\tau}{\hbar} \frac{\partial \varepsilon}{\partial \mathbf{k}} \cdot \mathbf{E} \right]$.

To calculate it, let us first calculate $\nabla [\phi \mathbf{A} \cdot \mathbf{C}]$, where ϕ is a scalar function, \mathbf{A} is a vector function, and \mathbf{C} is a constant vector.

$\nabla [\phi \mathbf{A} \cdot \mathbf{C}] = (\nabla \phi)(\mathbf{A} \cdot \mathbf{C}) + \phi(\mathbf{C} \cdot \nabla) \mathbf{A} + \phi(\mathbf{C} \times (\nabla \times \mathbf{A}))$. In our calculation, $\phi \sim \frac{\partial f}{\partial \varepsilon} \frac{1}{1 + \frac{e}{\hbar} \mathbf{B} \cdot \boldsymbol{\Omega}} \frac{e\tau}{\hbar}$, $\mathbf{A} \sim \frac{\partial \varepsilon}{\partial \mathbf{k}}$, and $\mathbf{C} \sim \mathbf{E}$.

Then,

$$\frac{\partial}{\partial \mathbf{k}} \left[\frac{\partial f}{\partial \varepsilon} \frac{1}{1 + \frac{e}{\hbar} \mathbf{B} \cdot \boldsymbol{\Omega}} \frac{e\tau}{\hbar} \frac{\partial \varepsilon}{\partial \mathbf{k}} \cdot \mathbf{E} \right] = \frac{\partial}{\partial \mathbf{k}} \left[\frac{\frac{\partial f}{\partial \varepsilon} \tau}{1 + \frac{e}{\hbar} \mathbf{B} \cdot \boldsymbol{\Omega}} \right] \frac{e\mathbf{E}}{\hbar} \cdot \frac{\partial \varepsilon}{\partial \mathbf{k}} + \frac{\frac{\partial f}{\partial \varepsilon} \tau}{1 + \frac{e}{\hbar} \mathbf{B} \cdot \boldsymbol{\Omega}} \left[\left(\frac{e}{\hbar} \mathbf{E} \cdot \frac{\partial}{\partial \mathbf{k}} \right) \frac{\partial \varepsilon}{\partial \mathbf{k}} + \frac{e}{\hbar} \mathbf{E} \times \left(\frac{\partial}{\partial \mathbf{k}} \times \frac{\partial \varepsilon}{\partial \mathbf{k}} \right) \right].$$

The last term is zero because it is the curl of a gradient, $\frac{\partial}{\partial \mathbf{k}} \times \frac{\partial \varepsilon}{\partial \mathbf{k}} = \nabla_{\mathbf{k}} \times (\nabla_{\mathbf{k}} \varepsilon) = 0$.

Finally, the solution is, obtained by adding g_0 and g_1 ,

$$g = \frac{\partial f}{\partial \varepsilon} \frac{1}{1 + \frac{e}{\hbar} \mathbf{B} \cdot \boldsymbol{\Omega}} \frac{\tau}{\hbar} \frac{\partial \varepsilon}{\partial \mathbf{k}} \cdot e\mathbf{E} + \frac{\frac{e\tau}{\hbar^2} \frac{\partial \varepsilon}{\partial \mathbf{k}}}{1 + \frac{e}{\hbar} \mathbf{B} \cdot \boldsymbol{\Omega}} \cdot \mathbf{B} \times \left[\frac{\partial}{\partial \mathbf{k}} \left[\frac{\frac{\partial f}{\partial \varepsilon} \tau}{1 + \frac{e}{\hbar} \mathbf{B} \cdot \boldsymbol{\Omega}} \right] \left(\frac{e\mathbf{E}}{\hbar} \cdot \frac{\partial \varepsilon}{\partial \mathbf{k}} \right) + \frac{\frac{\partial f}{\partial \varepsilon} \tau}{1 + \frac{e}{\hbar} \mathbf{B} \cdot \boldsymbol{\Omega}} \left[\left(\frac{e}{\hbar} \mathbf{E} \cdot \frac{\partial}{\partial \mathbf{k}} \right) \frac{\partial \varepsilon}{\partial \mathbf{k}} \right] \right] \quad (12)$$

3. Solution of the BTE for $E = 0$, $\nabla\mu \neq 0$, $\nabla T \neq 0$

Under these conditions, the equation becomes,

$$\frac{g}{\tau} - \frac{e}{\hbar^2} \frac{\partial \varepsilon}{\partial \mathbf{k}} \times \mathbf{B} \cdot \frac{\partial}{\partial \mathbf{k}} g = \frac{\partial f}{\partial \varepsilon} \frac{1}{1 + \frac{e}{\hbar} \mathbf{B} \cdot \boldsymbol{\Omega}} \frac{1}{\hbar} \frac{\partial \varepsilon}{\partial \mathbf{k}} \cdot \left[\nabla\mu + \nabla T \frac{\varepsilon - \mu}{T} \right]$$

Let $g = g_0 + g_1$, with $g_0 = \frac{\partial f}{\partial \varepsilon} \frac{1}{1 + \frac{e}{\hbar} \mathbf{B} \cdot \boldsymbol{\Omega}} \frac{\tau}{\hbar} \frac{\partial \varepsilon}{\partial \mathbf{k}} \cdot \left[\nabla\mu + \nabla T \frac{\varepsilon - \mu}{T} \right]$ and $\frac{g_1}{\tau} - \frac{e}{\hbar^2} \frac{\partial \varepsilon}{\partial \mathbf{k}} \times \mathbf{B} \cdot \frac{\partial}{\partial \mathbf{k}} g_0 = 0$.

The form is otherwise similar to the form of the equations in Appendix I2, but here we have a factor of $(\varepsilon - \mu)$ with ∇T . As a result, we would get *additional factors* like $\frac{\partial \varepsilon}{\partial \mathbf{k}} \cdot \frac{\nabla T}{T}$ when we calculate $\frac{\partial g_0}{\partial \mathbf{k}}$ in order to calculate g_1 . One might think that such additional factors may violate the Onsager relation. But such factors would cancel due to a vector triple product being zero, and the Onsager relation continues to hold.

We have,

$$\begin{aligned} \frac{\partial g_0}{\partial \mathbf{k}} &= \frac{\partial}{\partial \mathbf{k}} \left[\frac{\frac{\partial f}{\partial \varepsilon} \tau}{1 + \frac{e}{\hbar} \mathbf{B} \cdot \boldsymbol{\Omega}} \right] \frac{\nabla\mu + \frac{\varepsilon - \mu}{T}}{\hbar} \cdot \frac{\partial \varepsilon}{\partial \mathbf{k}} + \frac{\frac{\partial f}{\partial \varepsilon} \tau}{1 + \frac{e}{\hbar} \mathbf{B} \cdot \boldsymbol{\Omega}} \left[\left(\frac{\nabla\mu + \frac{\varepsilon - \mu}{T}}{\hbar} \cdot \frac{\partial}{\partial \mathbf{k}} \right) \frac{\partial \varepsilon}{\partial \mathbf{k}} + \frac{1}{\hbar} \left(\nabla\mu + \frac{\varepsilon - \mu}{T} \right) \times \underbrace{\left(\frac{\partial}{\partial \mathbf{k}} \times \frac{\partial \varepsilon}{\partial \mathbf{k}} \right)}_0 \right] \\ &+ \frac{\frac{\partial f}{\partial \varepsilon} \tau}{1 + \frac{e}{\hbar} \mathbf{B} \cdot \boldsymbol{\Omega}} \left[\frac{1}{\hbar} \left(\frac{\partial \varepsilon}{\partial \mathbf{k}} \cdot \frac{\partial}{\partial \mathbf{k}} \right) \left(\frac{\varepsilon \nabla T}{T} \right) + \frac{1}{\hbar} \frac{\partial \varepsilon}{\partial \mathbf{k}} \times \left(\frac{\partial}{\partial \mathbf{k}} \times \left(\frac{\varepsilon \nabla T}{T} \right) \right) \right] \end{aligned}$$

The term inside the last third bracket can be further simplified.

$$\begin{aligned} \left(\frac{\partial \varepsilon}{\partial \mathbf{k}} \cdot \frac{\partial}{\partial \mathbf{k}} \right) \left(\frac{\varepsilon \nabla T}{T} \right) + \frac{\partial \varepsilon}{\partial \mathbf{k}} \times \left(\frac{\partial}{\partial \mathbf{k}} \times \left(\frac{\varepsilon \nabla T}{T} \right) \right) &= \left(\frac{\partial \varepsilon}{\partial \mathbf{k}} \cdot \frac{\partial \varepsilon}{\partial \mathbf{k}} \right) \left(\frac{\nabla T}{T} \right) + \frac{\partial \varepsilon}{\partial \mathbf{k}} \times \left(\frac{\partial \varepsilon}{\partial \mathbf{k}} \times \left(\frac{\nabla T}{T} \right) \right) \\ &= \left(\frac{\partial \varepsilon}{\partial \mathbf{k}} \cdot \frac{\partial \varepsilon}{\partial \mathbf{k}} \right) \left(\frac{\nabla T}{T} \right) + \left(\frac{\partial \varepsilon}{\partial \mathbf{k}} \cdot \frac{\nabla T}{T} \right) \frac{\partial \varepsilon}{\partial \mathbf{k}} - \left(\frac{\partial \varepsilon}{\partial \mathbf{k}} \cdot \frac{\partial \varepsilon}{\partial \mathbf{k}} \right) \left(\frac{\nabla T}{T} \right) \\ &= \left(\frac{\partial \varepsilon}{\partial \mathbf{k}} \cdot \frac{\nabla T}{T} \right) \frac{\partial \varepsilon}{\partial \mathbf{k}}. \end{aligned}$$

When we calculate $g_1 = \tau \frac{e}{\hbar^2} \frac{\partial \varepsilon}{\partial \mathbf{k}} \times \mathbf{B} \cdot \frac{\partial}{\partial \mathbf{k}} g_0$, this term cancels because $(\frac{\partial \varepsilon}{\partial \mathbf{k}} \times \mathbf{B}) \cdot \frac{\partial \varepsilon}{\partial \mathbf{k}} = 0$.

Then, the full solution is, $g = g_0 + g_1$

$$\begin{aligned} &= \frac{\partial f}{\partial \varepsilon} \frac{1}{1 + \frac{e}{\hbar} \mathbf{B} \cdot \boldsymbol{\Omega}} \frac{\tau}{\hbar} \frac{\partial \varepsilon}{\partial \mathbf{k}} \cdot \left[\nabla\mu + \nabla T \frac{\varepsilon - \mu}{T} \right] \\ &+ \frac{\frac{e\tau}{\hbar^2}}{1 + \frac{e}{\hbar} \mathbf{B} \cdot \boldsymbol{\Omega}} \frac{\partial \varepsilon}{\partial \mathbf{k}} \cdot \mathbf{B} \times \left[\frac{\partial}{\partial \mathbf{k}} \left[\frac{\frac{\partial f}{\partial \varepsilon} \tau}{1 + \frac{e}{\hbar} \mathbf{B} \cdot \boldsymbol{\Omega}} \right] \frac{\nabla\mu + \nabla T \frac{\varepsilon - \mu}{T}}{\hbar} \cdot \frac{\partial \varepsilon}{\partial \mathbf{k}} + \frac{\frac{\partial f}{\partial \varepsilon} \tau}{1 + \frac{e}{\hbar} \mathbf{B} \cdot \boldsymbol{\Omega}} \left[\left(\frac{\nabla\mu + \nabla T \frac{\varepsilon - \mu}{T}}{\hbar} \cdot \frac{\partial}{\partial \mathbf{k}} \right) \frac{\partial \varepsilon}{\partial \mathbf{k}} \right] \right] \end{aligned}$$

Since Eq. (17) is linear, when the electric field, the temperature gradient and the chemical potential gradient are each non-zero, we can add the two solutions in appendix I2 and appendix I3, and we get the solution in Eq. (18).

Appendix J: Validity of the perturbation theory on Boltzmann Transport Equation

Let us do an order of the magnitude calculation of the term containing the magnetic field. Classically, $\dot{\mathbf{k}} \cdot \frac{\partial}{\partial \mathbf{k}} g \sim \dot{\mathbf{p}} \cdot \frac{\partial}{\partial \mathbf{p}} g \sim e(\mathbf{v} \times \mathbf{B}) \cdot \frac{\partial}{m\partial \mathbf{v}} g \sim \boldsymbol{\omega} \times \mathbf{v} \cdot \frac{\partial g}{\partial \mathbf{v}} \sim \omega g$.

Then, if $\omega \ll \frac{1}{\tau}$ (in the limit of low magnetic field), it is justified to treat ωg as a perturbation over $\frac{g}{\tau}$.

1. How low magnetic is ‘low’?

For $\omega = \frac{1}{\tau}$, $B_{crit} = \frac{m^*}{\tau e}$, and a magnetic field much lower than this qualifies as a “low” magnetic field. If we take $m^* = m_e$ (the free electron mass) and $\tau \sim 10^{-14}s$ (from chapter 3 of Ref.⁸⁴, for a typical metal), implies $B_{crit} \sim 570T$, which is order of magnitudes higher than the magnetic field accessible in labs. In typical metals, $m^* > m_e$, the bare electron mass, and the critical magnetic field is even higher.

In very clean samples, τ can be as high as $10^{-12}s$, and even there, the critical magnetic field would be $5.7T$, which too is hard to achieve in most labs. In less clean samples, the critical magnetic field is much more.

Conclusion: Unless the sample is very clean, the magnetic fields produced in labs qualify as “low”, and in this regime, this perturbation theory remains valid.

- ¹ M. V. Berry, *Proceedings of the Royal Society of London. A. Mathematical and Physical Sciences* **392**, 45 (1984).
- ² R. Karplus and J. M. Luttinger, *Phys. Rev.* **95**, 1154 (1954).
- ³ M.-C. Chang and Q. Niu, *Phys. Rev. Lett.* **75**, 1348 (1995).
- ⁴ M.-C. Chang and Q. Niu, *Phys. Rev. B* **53**, 7010 (1996).
- ⁵ G. Sundaram and Q. Niu, *Phys. Rev. B* **59**, 14915 (1999).
- ⁶ Y. D. Chong, *Phys. Rev. B* **81**, 052303 (2010).
- ⁷ D. C. Ralph, “Berry curvature, semiclassical electron dynamics, and topological materials: Lecture notes for introduction to solid state physics,” (2020), [arXiv:2001.04797 \[cond-mat.mes-hall\]](https://arxiv.org/abs/2001.04797).
- ⁸ N. Nagaosa, J. Sinova, S. Onoda, A. H. MacDonald, and N. P. Ong, *Rev. Mod. Phys.* **82**, 1539 (2010).
- ⁹ D. Mandal, K. Das, and A. Agarwal, *Phys. Rev. B* **102**, 205414 (2020).
- ¹⁰ R.-C. Xiao, Z. Wang, Z.-Q. Zhang, J. Liu, and H. Jiang, *Chinese Physics Letters* **38**, 057301 (2021).
- ¹¹ S. K. Das, T. Nag, and S. Nandy, *Phys. Rev. B* **104**, 115420 (2021).
- ¹² D. Xiao, M.-C. Chang, and Q. Niu, *Rev. Mod. Phys.* **82**, 1959 (2010).
- ¹³ K. Behnia and H. Aubin, *Reports on Progress in Physics* **79**, 046502 (2016).
- ¹⁴ H. Yang, W. You, J. Wang, J. Huang, C. Xi, X. Xu, C. Cao, M. Tian, Z.-A. Xu, J. Dai, and Y. Li, *Phys. Rev. Materials* **4**, 024202 (2020).
- ¹⁵ S. Saha and S. Tewari, *The European Physical Journal B* **91**, 4 (2018).
- ¹⁶ Y. V. Ivanov, A. T. Burkov, and D. A. Pshenay-Severin, *physica status solidi (b)* **255**, 1800020 (2018).
- ¹⁷ S. Nandy, A. Taraphder, and S. Tewari, *Scientific Reports* **8**, 14983 (2018).
- ¹⁸ M. D. Caio, N. R. Cooper, and M. J. Bhaseen, *Phys. Rev. B* **94**, 155104 (2016).
- ¹⁹ A. A. Burkov, *Phys. Rev. Lett.* **113**, 187202 (2014).
- ²⁰ H.-Z. Lu and S.-Q. Shen, *Frontiers of Physics* **12**, 127201 (2017).
- ²¹ R. M. A. Dantas, F. Peña-Benitez, B. Roy, and P. Surówka, *Journal of High Energy Physics* **2018**, 69 (2018).
- ²² K. Das and A. Agarwal, *Phys. Rev. B* **99**, 085405 (2019).
- ²³ D. Ma, H. Jiang, H. Liu, and X. C. Xie, *Phys. Rev. B* **99**, 115121 (2019).
- ²⁴ K. Das and A. Agarwal, *Phys. Rev. B* **100**, 085406 (2019).
- ²⁵ B. Sadhukhan and T. Nag, *Phys. Rev. B* **103**, 144308 (2021).
- ²⁶ E. J. König, P. M. Ostrovsky, M. Dzero, and A. Levchenko, *Phys. Rev. B* **94**, 041403 (2016).
- ²⁷ C. Xiao, D. Li, and Z. Ma, *Frontiers of Physics* **11**, 117201 (2016).
- ²⁸ P. Kapri, B. Dey, and T. K. Ghosh, *Phys. Rev. B* **103**, 165401 (2021).
- ²⁹ O. Pal, B. Dey, and T. K. Ghosh, “Berry curvature induced anisotropic magnetotransport in a quadratic triple-component fermionic system,” (2021), [arXiv:2110.12356 \[cond-mat.mes-hall\]](https://arxiv.org/abs/2110.12356).
- ³⁰ H. M. Price and N. R. Cooper, *Phys. Rev. A* **85**, 033620 (2012).
- ³¹ S. Spurrier and N. R. Cooper, *Phys. Rev. A* **97**, 043603 (2018).
- ³² Z. Wang, L. Dong, C. Xiao, and Q. Niu, *Phys. Rev. Lett.* **126**, 187001 (2021).
- ³³ B. Höckendorf, A. Alvermann, and H. Fehske, *Phys. Rev. Research* **2**, 023235 (2020).
- ³⁴ N. Silberstein, J. Behrends, M. Goldstein, and R. Ilan, *Phys. Rev. B* **102**, 245147 (2020).
- ³⁵ D. Xiao, W. Yao, and Q. Niu, *Phys. Rev. Lett.* **99**, 236809 (2007).
- ³⁶ P. M. Ostrovsky, I. V. Gornyi, and A. D. Mirlin, *Phys. Rev. B* **77**, 195430 (2008).
- ³⁷ C. Zhang, S. Tewari, and S. Das Sarma, *Phys. Rev. B* **79**, 245424 (2009).
- ³⁸ D. Xiao, G.-B. Liu, W. Feng, X. Xu, and W. Yao, *Phys. Rev. Lett.* **108**, 196802 (2012).
- ³⁹ C. Xiao and Q. Niu, *Phys. Rev. B* **96**, 045428 (2017).
- ⁴⁰ L. Dong, C. Xiao, B. Xiong, and Q. Niu, *Phys. Rev. Lett.* **124**, 066601 (2020).
- ⁴¹ A. Friedlan and M. M. Dignam, *Phys. Rev. B* **103**, 075414 (2021).
- ⁴² I. Sodemann and L. Fu, *Phys. Rev. Lett.* **115**, 216806 (2015).
- ⁴³ Y. Gao and D. Xiao, *Phys. Rev. B* **98**, 060402 (2018).
- ⁴⁴ Y. Zhang, J. van den Brink, C. Felser, and B. Yan, *2D Mater.* **5**, 044001 (2018).
- ⁴⁵ C. Xiao, H. Zhou, and Q. Niu, *Phys. Rev. B* **100**, 161403 (2019).
- ⁴⁶ C. Xiao, Z. Z. Du, and Q. Niu, *Phys. Rev. B* **100**, 165422 (2019).
- ⁴⁷ X.-Q. Yu, Z.-G. Zhu, J.-S. You, T. Low, and G. Su, *Phys. Rev. B* **99**, 201410 (2019).
- ⁴⁸ S. Nandy and I. Sodemann, *Phys. Rev. B* **100**, 195117 (2019).
- ⁴⁹ A. C. Balram, K. Flensberg, J. Paaske, and M. S. Rudner, *Phys. Rev. Lett.* **123**, 246803 (2019).
- ⁵⁰ C. Zeng, S. Nandy, and S. Tewari, *Phys. Rev. Research* **2**, 032066 (2020).
- ⁵¹ B. Sadhukhan and T. Nag, “Electronic structure and unconventional non-linear response in SrSi_2 ,” (2021), [arXiv:2104.01629 \[cond-mat.mes-hall\]](https://arxiv.org/abs/2104.01629).
- ⁵² N. W. Ashcroft and N. D. Mermin, *Solid State Physics* (Holt-Saunders, 1976).
- ⁵³ Charge of an electron is taken to be $-e$ in this paper.
- ⁵⁴ See Appendix A for more discussion about this quantity.
- ⁵⁵ L. Onsager, *Phys. Rev.* **37**, 405 (1931).
- ⁵⁶ L. Onsager, *Phys. Rev.* **38**, 2265 (1931).
- ⁵⁷ N. R. Cooper, B. I. Halperin, and I. M. Ruzin, *Phys. Rev. B* **55**, 2344 (1997).
- ⁵⁸ D. Xiao, Y. Yao, Z. Fang, and Q. Niu, *Phys. Rev. Lett.* **97**, 026603 (2006).
- ⁵⁹ J. D. Jackson, *Classical electrodynamics*, 3rd ed. (Wiley, New York, NY, 1999).
- ⁶⁰ C. Xiao and Q. Niu, *Phys. Rev. B* **101**, 235430 (2020).
- ⁶¹ K.-S. Kim, H.-J. Kim, and M. Sasaki, *Phys. Rev. B* **89**, 195137 (2014).
- ⁶² O. Pal, B. Dey, and T. K. Ghosh, *J. Phys.: Condens. Matter* **34**, 025702 (2022).
- ⁶³ Y. Zhang, Y. Gao, and D. Xiao, *Phys. Rev. B* **102**, 235161 (2020).
- ⁶⁴ In this paper, the charge of an electron is $-e$.
- ⁶⁵ D. Xiao, J. Shi, and Q. Niu, *Phys. Rev. Lett.* **95**, 137204 (2005).

- ⁶⁶ In principle, the energy eigenvalues will also be modified due to Zeeman coupling of the spin magnetic moment with the magnetic field. But that will not change any of the main results, and we can neglect it.
- ⁶⁷ T. Thonhauser, D. Ceresoli, D. Vanderbilt, and R. Resta, *Phys. Rev. Lett.* **95**, 137205 (2005).
- ⁶⁸ D. Ceresoli, T. Thonhauser, D. Vanderbilt, and R. Resta, *Phys. Rev. B* **74**, 024408 (2006).
- ⁶⁹ J. Shi, G. Vignale, D. Xiao, and Q. Niu, *Phys. Rev. Lett.* **99**, 197202 (2007).
- ⁷⁰ If there is a non-zero magnetic field, we only need to make a handful of changes to the equations (6). The energy eigenvalues of the Bloch eigenstates will be modified as $\varepsilon_{\mathbf{k}} = \varepsilon_0(\mathbf{k}) - \mathbf{m}_{\mathbf{k}} \cdot \mathbf{B}$, and the distribution functions $f_{\mathbf{k}}$ and $g_{\mathbf{k}}$ will also be modified (see section IV). Also, the Jacobian factor $(1 + \frac{e}{\hbar} \mathbf{B} \cdot \boldsymbol{\Omega})$ would not be canceled in the expressions containing $\mathbf{m}_{\mathbf{k}}$, and we would have terms like $\int \frac{2d\mathbf{k}}{(2\pi)^d} (1 + \frac{e}{\hbar} \mathbf{B} \cdot \boldsymbol{\Omega}) f_{\mathbf{k}} \mathbf{m}_{\mathbf{k}}$ in Equations (6a) and (6b), and the rest of the calculation would be identical up to leading order in the magnetic field.
- ⁷¹ See Appendix C and Appendix D for a self-contained derivation of how the orbital magnetic moment appears in Eq. (6a). Similar calculations produce the terms involving orbital magnetization in Eq. (6b).
- ⁷² The charge magnetization should be zero for an empty band.
- ⁷³ In Ref.⁵⁷, the authors use the notation $\mathbf{M}^E = \mathbf{M}_0^E + \phi(\mathbf{r})\mathbf{M}^N$, where \mathbf{M}^N (whose curl is bound number density current) is $\frac{\mathbf{M}^e}{-e}$, and $\phi(\mathbf{r}) = e\mathbf{E} \cdot \mathbf{r}$ is the potential energy due to the (constant) electric field.
- ⁷⁴ R. Resta, *Journal of Physics: Condensed Matter* **22**, 123201 (2010).
- ⁷⁵ Y. Hatsugai, *Phys. Rev. Lett.* **71**, 3697 (1993).
- ⁷⁶ R. S. K. Mong and V. Shivamoggi, *Phys. Rev. B* **83**, 125109 (2011).
- ⁷⁷ It is worthwhile to note that in Eq. (12) and Eq. (13), the absolute value of the chemical potential appears. Its implications are discussed in Appendix H.
- ⁷⁸ A. Shitade, *Progress of Theoretical and Experimental Physics*, Volume 2014, Issue 12, 123I01 (2014).
- ⁷⁹ In general, there is no “heat magnetization” analogous to the charge magnetization or the energy magnetization[?]. However, one can define such a quantity $\mathbf{M}^h = \mathbf{M}_0^E - \mu\mathbf{M}^N$, when the chemical potential throughout the sample is constant^{60,63,78?}.
- ⁸⁰ J. M. Ziman, *Principles of the theory of solids*, 2nd ed. (CUP, 1972).
- ⁸¹ When we solve the equation after discarding the term $\dot{\mathbf{r}} \cdot \frac{\partial g_{\mathbf{k}}}{\partial \mathbf{r}}$, and substitute the solution (see Eq. (18)) in this term, we would find that this term is second order in the applied fields. Then up to linear order, we can discard it self-consistently.
- ⁸² It can be easily verified that when there is no Berry curvature, and the band is parabolic with an effective mass m^* , and the scattering time τ is independent of \mathbf{k} , this solution produces the same electric conductivity tensor which is also obtained from the Drude model, $\overset{\leftrightarrow}{L}_{11} = \overset{\leftrightarrow}{\sigma} = \frac{ne^2\tau}{m^*} \begin{pmatrix} 1 & -\omega_c\tau \\ \omega_c\tau & 1 \end{pmatrix}$, where $\omega_c = \frac{eB}{m^*}$ is the cyclotron frequency.
- ⁸³ D. Culcer, J. Sinova, N. A. Sinitsyn, T. Jungwirth, A. H. MacDonald, and Q. Niu, *Phys. Rev. Lett.* **93**, 046602 (2004).
- ⁸⁴ S. H. Simon, *The Oxford Solid State Basics* (Oxford University Press, 2013).