

Quantum collider probes of the fermionic Higgs portal

U. Haisch,^{1*} M. Ruhdorfer,^{2*} K. Schmid^{3,4†} and A. Weiler^{4‡}

1 Werner-Heisenberg-Institut, Max-Planck-Institut für Physik,
Föhringer Ring 6, 80805 München, Germany

2 Laboratory for Elementary Particle Physics,
Cornell University, Ithaca, NY 14853, USA

3 Dipartimento di Fisica e Astronomia “G. Galilei”, Università di Padova,
Via Francesco Marzolo 8, 35131 Padova, Italy

4 Technische Universität München, Physik-Department,
James-Franck-Strasse 1, 85748 Garching, Germany

*haisch@mpp.mpg.de, *m.ruhdorfer@cornell.edu,
†konstantin.schmid@phd.unipd.it, ‡andreas.weiler@tum.de

March 14, 2024

Abstract

We explore the sensitivity of future hadron colliders to constrain the fermionic Higgs portal, with a focus on scenarios where the new fermions cannot be directly observed in exotic Higgs decays. This portal emerges in various models including twin-Higgs scenarios and dark matter models, posing significant challenges for collider tests. Working in an effective field theory (EFT), we determine the reach of the high-luminosity option of the Large Hadron Collider (HL-LHC), the high-energy upgrade of the LHC (HE-LHC) and a proposed Future Circular Collider (FCC) in probing the fermionic Higgs portal through off-shell and double-Higgs production. Notably, we find that quantum-enhanced indirect probes offer a better sensitivity than other direct Higgs measurements. We argue that this finding is valid in a wide class of ultraviolet realisations of the EFT. Our study presents a roadmap of a multifaceted search strategy for exploring the fermionic Higgs portal at forthcoming hadron machines.

Contents

1	Introduction	2
2	Calculation	4
2.1	RG evolution of the Wilson coefficients	4
2.2	Higgs tadpole	5
2.3	Higgs-boson self energy	6
2.4	Off-shell Higgs production	7
2.5	Double-Higgs production	8
3	Numerical analysis	11
3.1	Off-shell Higgs production	11
3.2	Double-Higgs production	13

3.3	VBF Higgs production	14
4	Collider reach: twin Higgs, $f = 3v$	16
5	Conclusions	20
A	Systematic uncertainties	23
B	Collider reach: twin Higgs, $f = 6v$	23
C	Collider reach: DM Higgs portal	26
D	Model dependence in twin-Higgs models	26
	References	28

1 Introduction

The discovery of a new spin-0 state at the Large Hadron Collider (LHC) by the ATLAS and CMS collaborations [1, 2] in 2012 has ushered in a new era in high-energy particle physics. In the last eleven years, it has been established by a concerted experimental effort that the discovered 125 GeV state has approximately the properties of the Higgs boson as predicted by the Standard Model (SM) of particle physics [3, 4]. This finding has opened up new avenues in the pursuit of physics beyond the SM (BSM) by performing Higgs precision measurements at the LHC similar to what has been done at LEP and SLD in the case of the Z boson [5].

Recent important examples of such LHC measurements include the latest constraints on the invisible and unobservable branching ratios of the Higgs boson, which are approximately 10% and 20%, respectively. Indeed, the obtained limits impose stringent restrictions on numerous BSM scenarios featuring either prompt or displaced exotic Higgs decays — see for example [6] for a recent comprehensive review. Specifically, these bounds apply when the masses of the new states are below approximately half of the Higgs-boson mass, around 62.5 GeV. Testing BSM scenarios becomes notably more challenging when dealing with new particles that primarily couple to the Higgs boson and have masses exceeding the kinematic threshold. In fact, there are only two identified categories of collider measurements offering sensitivity to such BSM model realisations. First, the pair-production of new particles in off-shell Higgs processes, including vector-boson fusion (VBF), $t\bar{t}h$, and the gluon-gluon-fusion channel [7–19]. Second, investigations into virtual effects stemming from the exchange of new particles in loops, contributing to processes like associated Zh , double-Higgs or off-shell Higgs production [20–27].

The goal of this work is to explore the sensitivity of future hadron collider measurements in constraining the fermionic Higgs portal

$$\mathcal{L}_{H\psi} = \frac{c_\psi}{f} |H|^2 \bar{\psi}\psi, \quad (1)$$

focusing on the case where the new fermions ψ are not accessible in exotic Higgs decays. Here H is the SM Higgs doublet and f is an energy scale needed to render the coupling constant c_ψ dimensionless. Effective interactions of the form (1) are known to arise in

Higgs-portal [28–33] and twin-Higgs models [34–38]. In the former case, the new fermion plays the role of a dark matter (DM) candidate, while in the latter case, the presence of ψ provides a solution to the hierarchy problem of the Higgs-boson mass in the form of an uncoloured top partner. In fact, in ultraviolet (UV) completions of (1) where the hierarchy problem is addressed, a light Higgs boson is natural if the coupling c_ψ satisfies [39]:

$$|c_\psi| \lesssim \frac{3y_t^2 f}{2N_\psi m_\psi}. \quad (2)$$

Here $y_t = \sqrt{2}m_t/v \simeq 0.94$ is the top-quark Yukawa coupling with $m_t \simeq 163$ GeV the top-quark $\overline{\text{MS}}$ mass and $v \simeq 246$ GeV is the vacuum expectation value (VEV) of the Higgs field, while m_ψ denotes the mass of the new fermion and we have assumed that ψ transforms under the fundamental representation of a $SU(N_\psi)$ gauge group. Notice that for $m_\psi \simeq y_t f/\sqrt{2}$ and $N_\psi = 3$ which holds in standard twin-Higgs models the naturalness condition (2) simply reads $|c_\psi| \lesssim y_t/\sqrt{2} \simeq 0.7$. This corresponds to a convention in which all Higgs couplings are modified by a factor $1 - v^2/(2f^2)$ relative to their SM predictions. Finally, it is important to realise that in twin-Higgs realisations of (1) the UV cut-off Λ of the theory is $\Lambda \simeq 4\pi f$, corresponding to the energy scale at which the theory becomes strongly coupled [34–38]. This is the relevant UV cut-off scale in most parts of our work (see Section 3, Section 4, Appendix A, Appendix B and Appendix D), and as it will become clear, all the considered observables are dominated by energies safely below this scale. In contrast, in weakly-coupled Higgs-portal models [28–33] the UV cut-off is $\Lambda \simeq f$, i.e. it is equal to the suppression scale appearing in the Lagrangian (1). Results for the latter case are relegated to Appendix C.

In order to provide a complete picture of the reach that hadron colliders have in the context of the fermionic Higgs portal (1) we consider the high-luminosity option of the LHC (HL-LHC), the high-energy upgrade of the LHC (HE-LHC) and a Future Circular Collider (FCC) with centre-of-mass (CM) energies of 14 TeV, 27 TeV and 100 TeV, respectively. Like in the previous publication [27] that considered the marginal Higgs portal, we focus our attention in the present study on the indirect constraints that measurements of $pp \rightarrow h^* \rightarrow ZZ$ and $pp \rightarrow hh$ production are expected to allow to set. Compared to the marginal Higgs portal we find that in the case of the fermionic Higgs portal the high-energy tails of the relevant kinematic distributions in both off-shell and double-Higgs production are enhanced. This is a result of the higher-dimensional nature of (1), which requires the inclusion of dimension-six operators in the calculation of the $gg \rightarrow h^* \rightarrow ZZ$ and $gg \rightarrow hh$ amplitudes to render them UV finite. The renormalisation group (RG) flow of the corresponding Wilson coefficients in turn leads to logarithmically enhanced corrections that modify the $gg \rightarrow h^* \rightarrow ZZ$ and $gg \rightarrow hh$ matrix elements and therefore the resulting kinematic distributions in a non-trivial fashion.

This logarithmic enhancement makes indirect probes, i.e. processes that test the quantum structure of the theory, in general more powerful than direct tests, i.e. measurements that dominantly test tree-level interactions, when constraining fermionic Higgs-portal interactions of the form (1). In order to emphasise this point we derive the direct constraints that searches for $\psi\bar{\psi}$ production in the VBF Higgs production channel may be able to set at future hadron machines and compare the obtained bounds to the limits that result from the various indirect Higgs probes.

This article is structured as follows: a detailed discussion of all the ingredients necessary to obtain the one-loop corrections to $pp \rightarrow h^* \rightarrow ZZ$ and $pp \rightarrow hh$ production in the context of the fermionic Higgs portal are provided in Section 2. In Section 3 we study the effects that (1) leave in the kinematic distributions of the off-shell and double-Higgs production channel as well as in pair production of portal fermions in the VBF Higgs

production channel. The numerical analysis of the HL-LHC, HE-LHC and FCC reach is performed in Section 4 and contains a comparison of the constraints on the model parameter space obtained via various indirect and direct Higgs probes. We conclude in Section 5. [Supplementary material is relegated to a number of appendices.](#)

2 Calculation

In this section, we describe the calculation of all the ingredients that are necessary to obtain predictions for the processes $gg \rightarrow h^* \rightarrow ZZ$ and $gg \rightarrow hh$. The actual generation and computation of the relevant amplitudes made use of the `Mathematica` packages `FeynArts` [40], `FeynRules` [41], `FormCalc` [42, 43] and `Package-X` [44].

The Lagrangian necessary for the further discussion takes the following form

$$\mathcal{L} = \bar{\psi} (i\mathcal{D} - m_\psi) \psi + \frac{c_\psi}{f} \left(|H|^2 - \frac{v^2}{2} \right) \bar{\psi} \psi + \sum_{i=6, H\Box} C_i Q_i, \quad (3)$$

where we have assumed that the fermion ψ transforms in the fundamental representation of a dark $SU(N_\psi)$ gauge group with the corresponding covariant derivative $\mathcal{D} \equiv D_\mu \gamma^\mu$. Notice that besides the portal coupling (1) the above Lagrangian contains the following two dimension-six operators

$$Q_6 = |H|^6, \quad Q_{H\Box} = \partial_\mu |H|^2 \partial^\mu |H|^2. \quad (4)$$

The associated Wilson coefficients C_6 and $C_{H\Box}$ carry mass dimension -2 . As we will explain in the next subsection, once radiative corrections on top of (1) are considered, the resulting quantum theory inevitably contains Q_6 and $Q_{H\Box}$. At the one-loop level and up to dimension six, only the latter two operators are generated, making the Lagrangian (3) the minimal effective field theory (EFT) that allows to consistently calculate off-shell and double-Higgs production in fermionic Higgs-portal models.

2.1 RG evolution of the Wilson coefficients

The appearance of the higher-dimensional terms entering (3) is readily understood by noticing that Feynman diagrams of the type shown in Figure 1 lead to UV divergent contributions proportional to the operators Q_6 and $Q_{H\Box}$. These UV divergences appear as $1/\epsilon$ poles if the respective scattering amplitudes are calculated using dimensional regularisation in $d = 4 - 2\epsilon$ space-time dimensions. They determine the RG evolution of the Wilson coefficients C_6 and $C_{H\Box}$. At leading-logarithmic order we find in the $\overline{\text{MS}}$ scheme the following result

$$C_i(\mu) = C_i(\mu_*) + \gamma_i \ln \left(\frac{\mu_*^2}{\mu^2} \right). \quad (5)$$

Here μ is a low-energy scale while μ_* denotes a high-energy matching scale. The relevant one-loop anomalous dimensions that appear in (5) are given by

$$\gamma_{H\psi,6} = \frac{N_\psi c_\psi^3 m_\psi}{4\pi^2 f^3}, \quad \gamma_{H\psi,H\Box} = \frac{N_\psi c_\psi^2}{16\pi^2 f^2}. \quad (6)$$

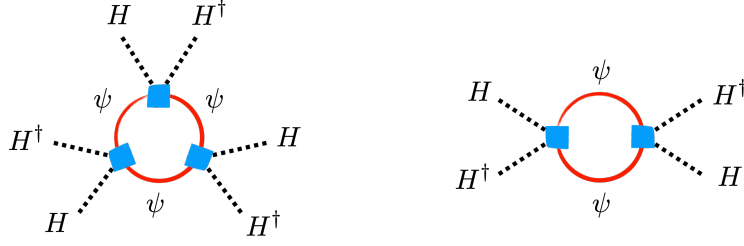


Figure 1: Exemplary graphs that lead to UV divergent contributions proportional to the operator Q_6 (left) and $Q_{H\Box}$ (right), respectively. Insertions of the portal coupling (1) are indicated by the blue squares.

2.2 Higgs tadpole

The presence of (3) affects the Higgs potential in such a way that its minimum is shifted. To correct for this shift, one has to perform a renormalisation of the Higgs tadpole

$$\hat{T} = T + \delta t, \quad (7)$$

which corresponds to a renormalisation of the Higgs VEV. Here T is the Higgs field one-point amputated Green's function while δt is the corresponding counterterm. It originates from the following definition of t in the Higgs potential

$$V \supset -v(\mu^2 - v^2\lambda)h \equiv -th, \quad (8)$$

where μ^2 and λ are the Higgs mass parameter and quartic coupling, respectively. At the tree level in the SM, one has $T = t = 0$. In our case, T receives contributions from the left one-loop diagram in Figure 2 as well as a tree-level contribution associated to the operator Q_6 . We obtain

$$T = \frac{N_\psi c_\psi m_\psi v}{4\pi^2 f} A_0(m_\psi^2) + \frac{3}{4} v^5 \left[C_6(\mu) - \frac{\gamma_{H\psi,6}}{\epsilon} \right], \quad (9)$$

where A_0 is the one-point Passarino-Veltman (PV) scalar integral defined as in [42, 43] and the expression $1/\epsilon$ is an abbreviation for $1/\epsilon - \gamma_E + \ln(4\pi)$ with $\gamma_E \simeq 0.577216$ the Euler constant. Notice that the normalisation of the PV one-loop integrals [42, 43] used here contains a factor $(4\pi)^\epsilon e^{-\gamma_E \epsilon} = 1 - \gamma_E + \ln(4\pi)$ which implies that if the $1/\epsilon$ poles cancel so do the additional γ_E and $\ln(4\pi)$ terms. This is the reason why in (9) we have not explicitly included these terms. We will do the same hereafter.

The standard renormalisation of the Higgs tadpole consists in defining δt such that

$$\hat{T} = 0, \quad (10)$$

order by order in perturbation theory. This choice minimises the effective potential of the Higgs field and in our case leads to the following expression

$$\begin{aligned} \delta t = & -\frac{N_\psi c_\psi m_\psi^3 v}{4\pi^2 f} \left[\frac{1}{\epsilon} + 1 + \ln\left(\frac{\mu^2}{m_\psi^2}\right) \right] \\ & - \frac{3}{4} v^5 \left\{ C_6(\mu_*) - \frac{N_\psi c_\psi^3 m_\psi}{4\pi^2 f^3} \left[\frac{1}{\epsilon} - \ln\left(\frac{\mu_*^2}{\mu^2}\right) \right] \right\}, \end{aligned} \quad (11)$$

for the tadpole counterterm.

2.3 Higgs-boson self energy

In the theory described by (3), the renormalised self-energy of the Higgs boson takes the following form

$$\begin{aligned} \hat{\Sigma}(\hat{s}) &= \Sigma(\hat{s}) + (\hat{s} - m_h^2) \delta Z_h - \delta m_h^2 \\ &+ \frac{15}{4} v^4 \left[C_6(\mu) - \frac{\gamma_{H\psi,6}}{\epsilon} \right] + 2v^2 \hat{s} \left[C_{H\Box}(\mu) - \frac{\gamma_{H\psi,H\Box}}{\epsilon} \right], \end{aligned} \quad (12)$$

where $\hat{s} = p^2$ with p the external four-momentum entering the Higgs-boson propagator and $m_h \simeq 125$ GeV is the Higgs mass. Furthermore, $\Sigma(\hat{s})$ denotes the bare one-loop Higgs-boson self energy, δZ_h and δm_h^2 represent the one-loop corrections to the Higgs wave function and mass counterterm and the terms in the second line are the tree-level $\overline{\text{MS}}$ counterterm contributions associated with the operators Q_6 and $Q_{H\Box}$. The results for the Wilson coefficients and the anomalous dimensions can be found in (5) and (6), respectively. Notice that in (12) we have not included a Higgs tadpole contribution because it is exactly cancelled by the respective counterterm for the choice (10) of tadpole renormalisation.

At the one-loop level the bare Higgs-boson self energy receives contributions from Feynman graphs such as the ones depicted on the right-hand side in Figure 2. We find

$$\Sigma(\hat{s}) = \frac{N_\psi c_\psi}{4\pi^2 f} \left(m_\psi - \frac{c_\psi v^2}{f} \right) A_0(m_\psi^2) + \frac{N_\psi c_\psi^2 v^2}{8\pi^2 f^2} (\hat{s} - 4m_\psi^2) B_0(\hat{s}, m_\psi^2, m_\psi^2), \quad (13)$$

where B_0 is the two-point PV scalar integral defined as in [42, 43].

The wave function renormalisation (WFR) constant δZ_h and the mass counterterm δm_h^2 are fixed by imposing the on-shell renormalisation conditions

$$\hat{\Sigma}(m_h^2) = 0, \quad \hat{\Sigma}'(m_h^2) = \left. \frac{d\hat{\Sigma}(\hat{s})}{d\hat{s}} \right|_{\hat{s}=m_h^2} = 0. \quad (14)$$

Using (12) and (13) as well as requiring (14), we obtain the following expressions

$$\begin{aligned} \delta Z_h &= -\frac{N_\psi c_\psi^2 v^2}{8\pi^2 f^2} \left\{ \left[B_0(m_h^2, m_\psi^2, m_\psi^2) - \frac{1}{\epsilon} + \ln \left(\frac{\mu_*^2}{\mu^2} \right) \right] \right. \\ &\quad \left. + (m_h^2 - 4m_\psi^2) B_0'(m_h^2, m_\psi^2, m_\psi^2) \right\} - 2v^2 C_{H\Box}(\mu_*), \\ \delta m_h^2 &= \frac{N_\psi c_\psi}{4\pi^2 f} \left(m_\psi - \frac{c_\psi v^2}{f} \right) A_0(m_\psi^2) + \frac{N_\psi c_\psi^2 v^2}{8\pi^2 f^2} (m_h^2 - 4m_\psi^2) B_0(m_h^2, m_\psi^2, m_\psi^2) \\ &+ \frac{15v^4}{4} \left\{ C_6(\mu_*) - \frac{N_\psi c_\psi^3 m_\psi}{4\pi^2 f^3} \left[\frac{1}{\epsilon} - \ln \left(\frac{\mu_*^2}{\mu^2} \right) \right] \right\} \\ &+ 2v^2 m_h^2 \left\{ C_{H\Box}(\mu_*) - \frac{N_\psi c_\psi^2}{16\pi^2 f^2} \left[\frac{1}{\epsilon} - \ln \left(\frac{\mu_*^2}{\mu^2} \right) \right] \right\}, \end{aligned} \quad (15)$$

where B_0' denotes the derivative of the two-point PV scalar integral with respect to the kinematic invariant as defined in (14). Notice that the sum of the three terms that appear in the square bracket of δZ_h are UV finite, because the explicit $1/\epsilon$ pole cancels against

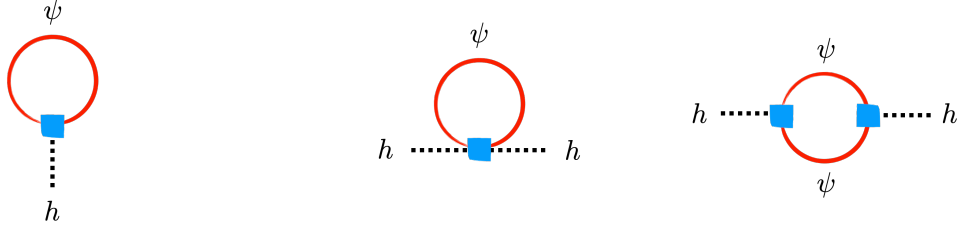


Figure 2: One-loop contributions to the Higgs tadpole (left) and Higgs-boson self energy (right). The blue squares indicate insertions of the portal coupling (1).

the UV divergence of the two-point PV scalar integral B_0 . Explicitly, we find

$$\delta Z_h = -\frac{N_\psi c_\psi^2 v^2}{8\pi^2 f^2} \left[\left(1 + \frac{2m_\psi^2}{m_h^2} \right) \Lambda(m_h^2, m_\psi, m_\psi) + 1 + \frac{4m_\psi^2}{m_h^2} + \ln \left(\frac{\mu_*^2}{m_\psi^2} \right) \right] - 2v^2 C_{H\Box}(\mu_*), \quad (16)$$

where $\Lambda(\hat{s}, m_0, m_1)$ represents the part of the $B_0(\hat{s}, m_0^2, m_1^2)$ integral containing the \hat{s} -plane branch cut

$$\Lambda(\hat{s}, m_0, m_1) = \frac{\sqrt{\lambda(m_0^2, m_1^2, \hat{s})}}{\hat{s}} \ln \left(\frac{m_0^2 + m_1^2 - \hat{s} + \sqrt{\lambda(m_0^2, m_1^2, \hat{s})}}{2m_0 m_1} \right), \quad (17)$$

with

$$\lambda(a, b, c) = a^2 - 2a(b+c) + (b-c)^2, \quad (18)$$

the Källén kinematic polynomial.

The results (13) and (15) can be combined to obtain the renormalised self-energy of the Higgs boson (12). In terms of (17) we arrive at

$$\hat{\Sigma}(\hat{s}) = \frac{N_\psi c_\psi^2 v^2}{8\pi^2 f^2} \left\{ (\hat{s} - 4m_\psi^2) \left[\Lambda(\hat{s}, m_\psi, m_\psi) - \Lambda(m_h^2, m_\psi, m_\psi) \right] - (\hat{s} - m_h^2) \left[\frac{2m_\psi^2}{m_h^2} \Lambda(m_h^2, m_\psi, m_\psi) - 1 + \frac{4m_\psi^2}{m_h^2} \right] \right\}. \quad (19)$$

Notice that our result for the renormalised Higgs-boson self energy is both μ_* and μ independent. In particular, the expression (19) does neither depend on the initial conditions $C_6(\mu_*)$ and $C_{H\Box}(\mu_*)$ of the Wilson coefficients nor on the logarithm $\ln(\mu_*^2/\mu^2)$.

2.4 Off-shell Higgs production

At the one-loop level the $gg \rightarrow h^* \rightarrow ZZ$ process receives contributions from Feynman graphs such as the one displayed in Figure 3 that contains a modified Higgs propagator with two insertions of the portal coupling (1). The full BSM amplitude for off-shell Higgs production in the $gg \rightarrow h^* \rightarrow ZZ$ channel can be factorised as follows

$$\mathcal{A}(gg \rightarrow h^* \rightarrow ZZ) = [1 + \sigma(\hat{s})] \mathcal{A}_{\text{SM}}(gg \rightarrow h^* \rightarrow ZZ), \quad (20)$$

where $\mathcal{A}_{\text{SM}}(gg \rightarrow h^* \rightarrow ZZ)$ is the corresponding SM amplitude. The \hat{s} -dependent form factor appearing in (20) receives a contribution from the Higgs WFR constant δZ_h and

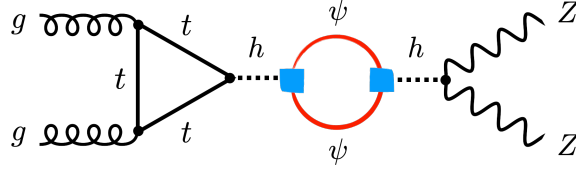


Figure 3: One-loop contribution to off-shell Higgs production in the $gg \rightarrow h^* \rightarrow ZZ$ channel. Insertions of the portal coupling (1) are indicated by the blue squares.

the renormalised self-energy of the Higgs boson $\hat{\Sigma}(\hat{s})$. Explicitly, one has

$$\begin{aligned} \sigma(\hat{s}) &= \delta Z_h - \frac{\hat{\Sigma}(\hat{s})}{\hat{s} - m_h^2} \\ &= -\frac{N_\psi c_\psi^2 v^2}{8\pi^2 f^2} \left[\frac{(\hat{s} - 4m_\psi^2) \Lambda(\hat{s}, m_\psi, m_\psi) - (m_h^2 - 4m_\psi^2) \Lambda(m_h^2, m_\psi, m_\psi)}{\hat{s} - m_h^2} \right. \\ &\quad \left. + 2 + \ln \left(\frac{\mu_*^2}{m_\psi^2} \right) \right] - 2v^2 C_{H\Box}(\mu_*), \end{aligned} \quad (21)$$

where in order to arrive at the final result we have used (16) and (19). Notice that the explicit contribution of the Higgs WFR constant δZ_h coming from the vertices exactly cancels against the δZ_h piece present in the renormalised self-energy of the Higgs boson $\hat{\Sigma}(\hat{s})$. In contrast, the Higgs WFR constant δZ_h does not drop out in the on-shell Higgs signal strengths to be discussed later.

It is important to realise that in the limit $\hat{s} \gg m_h^2, m_\psi^2$ the \hat{s} -dependent form factor (21) behaves as

$$\sigma(\hat{s}) \simeq -\frac{N_\psi c_\psi^2 v^2}{8\pi^2 f^2} \left[2 + \ln \left(\frac{\mu_*^2}{\hat{s}} \right) + i\pi \right] - 2v^2 C_{H\Box}(\mu_*), \quad (22)$$

which depends logarithmically on the high-energy matching scale μ_* and linearly on the initial condition $C_{H\Box}(\mu_*)$. This is a consequence of the RG flow of the operator $Q_{H\Box}$ discussed in Section 2.1. As we will see below the logarithmic enhancement of $\sigma(\hat{s})$ and therefore $\mathcal{A}(gg \rightarrow h^* \rightarrow ZZ)$ will play a crucial role in our numerical analysis of the constraints on (1) that future measurements of off-shell Higgs production are expected to be able to set.

2.5 Double-Higgs production

In Figure 4 two example graphs are shown that give rise to double-Higgs production via $gg \rightarrow hh$ in the presence of the portal coupling (1). The corresponding complete amplitude for double-Higgs production can be written as

$$\mathcal{A}(gg \rightarrow hh) = [1 + \delta Z_h] \mathcal{A}_{\text{SM}}^\Box(gg \rightarrow hh) + [1 + \delta(\hat{s})] \mathcal{A}_{\text{SM}}^\Delta(gg \rightarrow hh), \quad (23)$$

where $\mathcal{A}_{\text{SM}}^\Box(gg \rightarrow hh)$ and $\mathcal{A}_{\text{SM}}^\Delta(gg \rightarrow hh)$ denote the $gg \rightarrow hh$ amplitude arising from box and triangle diagrams in the SM, respectively. The \hat{s} -dependent form factor $\delta(\hat{s})$ encodes the one-loop and tree-level corrections associated with (3) and effectively corresponds to a modification of the trilinear Higgs self coupling. The box contribution to the amplitude instead only receives a correction from the Higgs wave function due to the two final-state Higgs bosons being on-shell.

The first ingredient needed to determine $\delta(\hat{s})$ is the renormalised trilinear Higgs vertex. It takes the following form

$$\begin{aligned} \hat{\Gamma}(\hat{s}) = & \Gamma(\hat{s}) - \frac{3}{v} \left[\frac{\delta t}{v} + \delta m_h^2 + \frac{3}{2} m_h^2 \delta Z_h \right] \\ & + 15 v^3 \left[C_6(\mu) - \frac{\gamma_{H\psi,6}}{\epsilon} \right] + 2v (\hat{s} + 2m_h^2) \left[C_{H\Box}(\mu) - \frac{\gamma_{H\psi,H\Box}}{\epsilon} \right], \end{aligned} \quad (24)$$

where $\Gamma(\hat{s})$ denotes the bare trilinear Higgs vertex, δt is the one-loop Higgs tadpole counterterm, δZ_h and δm_h^2 encode the one-loop corrections to the Higgs wave function and the mass counterterm, respectively, and the contributions in the second line are the one-loop $\overline{\text{MS}}$ counterterm corrections that arise from Q_6 and $Q_{H\Box}$. Note that the contribution from the tadpole counterterm can be found using its definition (8). The requirement $\hat{T} = 0$ preserves the tree-level relations between the Higgs VEV and the parameters in the Higgs potential, such that one finds that the counterterm for the Higgs quartic can be expressed as $\delta\lambda = \delta m_h^2/(2v^2) + \delta t/(2v^3)$. The bare trilinear Higgs vertex entering (24) is given by

$$\begin{aligned} \Gamma(\hat{s}) = & -\frac{N_\psi c_\psi^2 v}{8\pi^2 f^2} \left[6A_0(m_\psi^2) - 2(m_h^2 - 4m_\psi^2) B_0(m_h^2, m_\psi^2, m_\psi^2) \right. \\ & \left. - (\hat{s} - 4m_\psi^2) B_0(\hat{s}, m_\psi^2, m_\psi^2) \right] \\ & + \frac{N_\psi c_\psi^3 m_\psi v^3}{4\pi^2 f^3} \left[4B_0(m_h^2, m_\psi^2, m_\psi^2) + 2B_0(\hat{s}, m_\psi^2, m_\psi^2) \right. \\ & \left. - (\hat{s} + 2m_h^2 - 8m_\psi^2) C_0(\hat{s}, m_h^2, m_h^2, m_\psi^2, m_\psi^2, m_\psi^2) \right], \end{aligned} \quad (25)$$

where C_0 denotes the three-point PV scalar integral defined as in [42, 43]. Inserting the expressions (5), (11), (15) and (25) into (24) leads to

$$\begin{aligned} \hat{\Gamma}(\hat{s}) = & \frac{N_\psi c_\psi^2 v}{16\pi^2 f^2} \left[(7m_h^2 + 26m_\psi^2) \Lambda(m_h^2, m_\psi, m_\psi) + 2(\hat{s} - 4m_\psi^2) \Lambda(\hat{s}, m_\psi, m_\psi) \right. \\ & \left. + 4\hat{s} + 5m_h^2 + 36m_\psi^2 + (2\hat{s} + 7m_h^2) \ln \left(\frac{\mu_*^2}{m_\psi^2} \right) \right] \\ & + \frac{N_\psi c_\psi^3 m_\psi v^3}{4\pi^2 f^3} \left[4\Lambda(m_h^2, m_\psi, m_\psi) + 2\Lambda(\hat{s}, m_\psi, m_\psi) \right. \\ & \left. - (\hat{s} + 2m_h^2 - 8m_\psi^2) \Omega(\hat{s}, m_h, m_\psi) + 12 + 6 \ln \left(\frac{\mu_*^2}{m_\psi^2} \right) \right] \\ & + 6v^3 C_6(\mu_*) + v (2\hat{s} + 7m_h^2) C_{H\Box}(\mu_*), \end{aligned} \quad (26)$$

where

$$\Omega(\hat{s}, m_h, m_\psi) = \lim_{\epsilon \rightarrow 0^+} \int_0^1 dx \int_0^{1-x} dy \left[\hat{s}x(1-x-y) + m_h^2 y(1-y) - m_\psi^2 + i\epsilon \right]^{-1}. \quad (27)$$

Notice that our result (26) for the renormalised trilinear Higgs vertex is UV finite but depends on the high-energy matching scale μ_* both explicitly and through the initial conditions $C_6(\mu_*)$ and $C_{H\Box}(\mu_*)$. This is again a consequence of the RG evolution of the operators Q_6 and $Q_{H\Box}$ that has been discussed in Section 2.1.

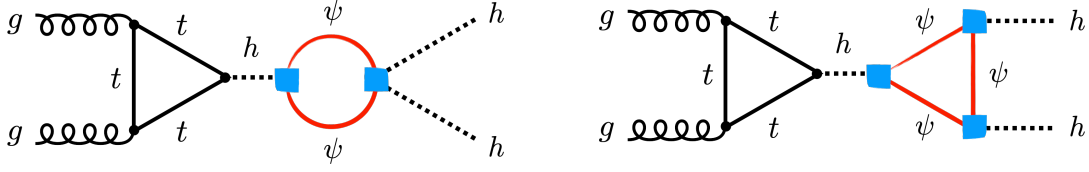


Figure 4: Two example one-loop diagrams that lead to double-Higgs production via $gg \rightarrow hh$. Each blue square represents an insertions of the portal coupling (1).

The \hat{s} -dependent form factor introduced in (24) receives contributions from the Higgs WFR constant δZ_h , the renormalised self-energy of the Higgs boson $\hat{\Sigma}(\hat{s})$ and the renormalised trilinear Higgs vertex $\hat{\Gamma}(\hat{s})$. To leading order we find the following expression

$$\begin{aligned}
\delta(\hat{s}) &= \frac{1}{2} \delta Z_h - \frac{\hat{\Sigma}(\hat{s})}{\hat{s} - m_h^2} - \frac{\hat{\Gamma}(\hat{s})}{6v\lambda_{\text{SM}}} \\
&= \frac{N_\psi c_\psi^2 v^2}{16\pi^2 f^2} \left[\frac{10m_h^4 - 4m_h^2(\hat{s} + m_\psi^2) - 20m_\psi^2 \hat{s}}{3m_h^2(\hat{s} - m_h^2)} \Lambda(m_h^2, m_\psi, m_\psi) \right. \\
&\quad - \frac{2(\hat{s} + 2m_h^2)(\hat{s} - 4m_\psi^2)}{3m_h^2(\hat{s} - m_h^2)} \Lambda(\hat{s}, m_\psi, m_\psi) \\
&\quad \left. - \frac{14}{3} - \frac{4(\hat{s} + 6m_\psi^2)}{3m_h^2} - \left(\frac{10}{3} + \frac{2\hat{s}}{3m_h^2} \right) \ln \left(\frac{\mu_*^2}{m_\psi^2} \right) \right] \\
&\quad - \frac{N_\psi c_\psi^3 m_\psi v^4}{4\pi^2 m_h^2 f^3} \left[\frac{4}{3} \Lambda(m_h^2, m_\psi, m_\psi) + \frac{2}{3} \Lambda(\hat{s}, m_\psi, m_\psi) \right. \\
&\quad \left. - \frac{1}{3} (\hat{s} + 2m_h^2 - 8m_\psi^2) \Omega(\hat{s}, m_h, m_\psi) + 4 + 2 \ln \left(\frac{\mu_*^2}{m_\psi^2} \right) \right] \\
&\quad - \frac{2v^4}{m_h^2} C_6(\mu_*) - \frac{2v^2}{3m_h^2} (\hat{s} + 5m_h^2) C_{H\Box}(\mu_*).
\end{aligned} \tag{28}$$

To arrive at the final result we have used that in the SM the Higgs trilinear self coupling is given by $\lambda_{\text{SM}} = m_h^2/(2v^2)$ and employed the expressions (16), (19) and (26).

It is again instructive to consider the limit $\hat{s} \gg m_h^2, m_\psi^2$ of the \hat{s} -dependent form factor (28). We obtain

$$\delta(\hat{s}) \simeq -\frac{N_\psi c_\psi^2 v^2 \hat{s}}{24\pi^2 m_h^2 f^2} \left[2 + \ln \left(\frac{\mu_*^2}{\hat{s}} \right) + i\pi \right] - \frac{2v^2 \hat{s}}{3m_h^2} C_{H\Box}(\mu_*). \tag{29}$$

Notice that this result grows linearly with \hat{s} and like (22) depends logarithmically on the high-energy matching scale μ_* and linearly on the initial condition $C_{H\Box}(\mu_*)$. In general terms the result (29) implies that the one-loop $gg \rightarrow hh$ amplitude in the fermionic Higgs-portal model (3) violates perturbative unitarity for sufficiently large \hat{s} . To mitigate this issue, we use in this article only the total $pp \rightarrow hh$ production cross section, which is dominated by the contributions close to the double-Higgs threshold $\hat{s} = 4m_h^2$, when constraining (1).

3 Numerical analysis

In this section, we discuss the kinematic distributions of off-shell, double- and VBF Higgs production that we will use to study the sensitivity of future hadron colliders to the fermionic Higgs portal. We perform our off-shell and double-Higgs analyses along the lines of the article [27], while in the case of pair production of the new fermions in the VBF Higgs production channel we rely on the publication [15].

3.1 Off-shell Higgs production

In order to compute kinematic distributions for $pp \rightarrow ZZ \rightarrow 4\ell$ production, we incorporated the formulas (20) and (21) into the event generator MCFM 8.0 [45]. In addition to the four-lepton invariant mass ($m_{4\ell}$) spectrum, our MCFM implementation can evaluate the following matrix-element (ME) based kinematic discriminant

$$D_S = \log_{10} \left(\frac{P_h}{P_{gg} + c P_{q\bar{q}}} \right), \quad (30)$$

which has also been employed for example in the publications [46–48]. Here, P_h represents the squared ME for the $gg \rightarrow h^* \rightarrow ZZ \rightarrow 4\ell$ process, while P_{gg} is the squared ME encompassing all gg -initiated channels, including the Higgs channel, the continuum background and their interference. Additionally, $P_{q\bar{q}}$ denotes the squared ME for the $q\bar{q} \rightarrow ZZ \rightarrow 4\ell$ process. Like in [46–48], the constant c in (30) is chosen as 0.1 to balance the contributions from $q\bar{q}$ - and gg -initiated processes. In the SM, over 99% of the total $pp \rightarrow ZZ \rightarrow 4\ell$ cross section is observed within the range of $-4.5 < D_S < 0.5$ [46]. Consequently, for BSM scenarios predicting events with $D_S < -4.5$ or $D_S > 0.5$, the variable D_S serves as a null test. See for example [49, 50] for BSM search strategies that exploit this feature.

Following the methodology outlined in [27, 49], we incorporate QCD corrections into our $pp \rightarrow ZZ \rightarrow 4\ell$ analysis. Specifically, for the two distinct production channels, we compute the so-called K -factor, defined as the ratio between the fiducial cross section at a given order in QCD and the corresponding leading order (LO) prediction. For the gg -initiated contribution, we rely on the results from [51–54]. The ratio between the next-to-leading (NLO) and LO gluon-gluon-fusion predictions remains essentially constant across $m_{4\ell}$, and through averaging, we determine $K_{gg}^{\text{NLO}} = 1.83$. In the case of the $q\bar{q}$ -initiated contribution, we utilise the next-to-next-to-leading order (NNLO) results obtained in [52, 55]. The relevant K -factor is also observed to be nearly flat in $m_{4\ell}$, with a central value of $K_{q\bar{q}}^{\text{NNLO}} = 1.55$. These K -factors are then employed to derive a QCD-improved prediction for the $pp \rightarrow ZZ \rightarrow 4\ell$ cross section differentially in the variable O by means of:

$$\frac{d\sigma_{pp}}{dO} = K_{gg}^{\text{NLO}} \left(\frac{d\sigma_{gg}}{dO} \right)_{\text{LO}} + K_{q\bar{q}}^{\text{NNLO}} \left(\frac{d\sigma_{q\bar{q}}}{dO} \right)_{\text{LO}}. \quad (31)$$

It is important to emphasise that (31) strictly holds only for the $m_{4\ell}$ spectrum. As shown in [49], when applying (31) to the D_S distribution one obtains a nearly constant K -factor of approximately 1.6 between the LO and the improved result. The inclusion of higher-order QCD corrections furthermore reduces the scale uncertainties of D_S by a factor of about 3 from around 7.5% to 2.5%. The quoted uncertainties rely on (31) in the case of the QCD-improved prediction of D_S and have been obtained from seven-point scale variations enforcing the constraint $1/2 \leq \mu_R/\mu_F \leq 2$ on the renormalisation and factorisation scales μ_R and μ_F . To which extent the small scale uncertainties of the QCD-improved prediction (31) provide a reliable estimate of the size of higher-order QCD effects in D_S is questionable. As a result, in our exploration of the collider reach

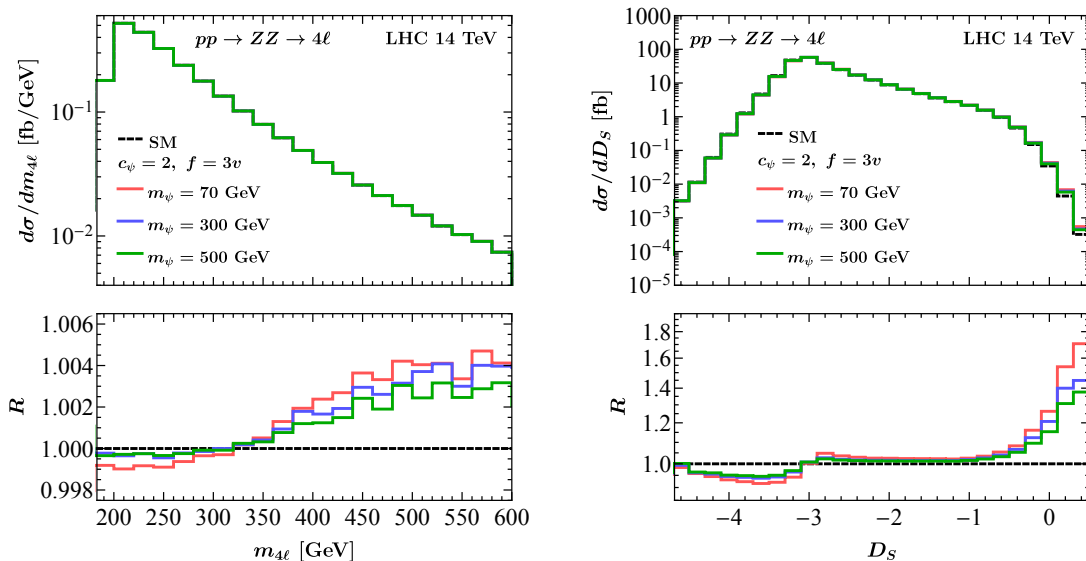


Figure 5: Comparison of off-shell Higgs production distributions for the SM (dashed black) and three distinct fermion Higgs-portal scenarios (1). These scenarios assume $c_\psi = 2$ and $f = 3v$, with fermion masses set to $m_\psi = 70$ GeV (solid red), $m_\psi = 300$ GeV (solid blue) and $m_\psi = 500$ GeV (solid green). The left (right) plot presents results for the four-lepton invariant mass ($m_{4\ell}$) and the discriminant variable (D_S), respectively, in $pp \rightarrow ZZ \rightarrow 4\ell$ production. All distributions are based on QCD-improved predictions and pertain to LHC collisions at a CM energy of $\sqrt{s} = 14$ TeV. The lower panels illustrate the ratios between the BSM distributions and their corresponding SM predictions. Further details are provided in the main text.

in Section 4, we will adopt different assumptions regarding the systematic uncertainties involved in our ME-based search strategy. It is worth noting that a similar approach is employed in the projections [56, 57] that assess the high-luminosity LHC (HL-LHC) potential for constraining off-shell Higgs-boson production and the Higgs-boson total width in $pp \rightarrow ZZ \rightarrow 4\ell$.

In our HL-LHC analysis of $pp \rightarrow ZZ \rightarrow 4\ell$ production, we focus on four-lepton invariant masses within the range of $140 \text{ GeV} < m_{4\ell} < 600 \text{ GeV}$. The charged leptons are required to satisfy the requirement $|\eta_\ell| < 2.5$ on their pseudorapidity. Additionally, the lepton with the highest transverse momentum (p_T) must obey $p_{T,\ell_1} > 20 \text{ GeV}$, while the second, third and fourth hardest leptons are required to meet the conditions $p_{T,\ell_2} > 15 \text{ GeV}$, $p_{T,\ell_3} > 10 \text{ GeV}$ and $p_{T,\ell_4} > 6 \text{ GeV}$, respectively. The lepton pair with an invariant mass closest to the Z -boson mass is constrained to lie in the range $50 \text{ GeV} < m_{12} < 106 \text{ GeV}$, while the remaining lepton pair must have an invariant mass within $50 \text{ GeV} < m_{34} < 115 \text{ GeV}$. We note that similar cuts have been employed in the ATLAS and CMS analyses [46–48, 56–59]. For the selected leptons, we assume a detection efficiency of 99% (95%) for muons (electrons). These efficiencies correspond to those reported in the latest ATLAS analysis of off-shell Higgs production [48]. As input we use $G_F = 1/(\sqrt{2}v^2) = 1.16639 \cdot 10^{-5}, \text{ GeV}^{-2}$, $m_Z = 91.1876, \text{ GeV}$, $m_h = 125 \text{ GeV}$ and $m_t = 173 \text{ GeV}$. The NNPDF40_nlo_as_01180 parton distribution functions (PDFs) [60] are employed. The renormalisation and factorisation scales are dynamically set to $m_{4\ell}$ on an event-by-event basis. Our $pp \rightarrow ZZ \rightarrow 4\ell$ predictions encompass both different-flavour ($e^+e^-\mu^+\mu^-$) and same-flavour ($2e^+2e^-$ and $2\mu^+2\mu^-$) decay channels.

In Figure 5, we compare the $m_{4\ell}$ (left) and D_S (right) distributions in $pp \rightarrow ZZ \rightarrow 4\ell$ production at $\sqrt{s} = 14, \text{TeV}$. The SM (dashed black) is contrasted with three distinct fermion Higgs-portal scenarios (1) featuring $c_\psi = 2$ and $f = 3v$, alongside the choices $m_\psi = 70 \text{ GeV}$ (solid red), $m_\psi = 300 \text{ GeV}$ (solid blue) and $m_\psi = 500 \text{ GeV}$ (solid green). The plots are generated using $N_\psi = 3$, $\mu_* = 4\pi f$ and $C_{H\Box}(\mu_*) = 0$ in (21). We note that $N_\psi = 3$ is characteristic of standard twin-Higgs models, while the other two choices imply the absence of a direct matching correction to $Q_{H\Box}$ at the UV cut-off scale $\Lambda = 4\pi f$, where the theory becomes strongly coupled. The displayed results therefore exclusively capture the model-independent logarithmic corrections associated with the RG evolution of the Wilson coefficient $C_{H\Box}$ from μ_* down to m_ψ (cf. (5) and (6)). Notice that these logarithmically enhanced effects represent the minimal contributions to any UV-finite $gg \rightarrow h^* \rightarrow ZZ$ amplitude of the form (20). The non-logarithmic contributions associated to $C_{H\Box}(\mu_*)$ are instead not determined by the UV-pole structure of $\mathcal{A}(gg \rightarrow h^* \rightarrow ZZ)$ which renders them model-dependent. By comparing the relative modifications in the panels of Figure 5, it becomes evident that the four-lepton invariant mass $m_{4\ell}$ has a much weaker discriminatory power compared to the variable D_S in constraining interactions of the form (1). This observation aligns with similar findings in the article [27], which investigated the marginal Higgs portal. However, for the fermionic Higgs portal, the largest relative modifications occur in the tails of the distributions for $m_{4\ell} \gtrsim 400 \text{ GeV}$ and $D_S \gtrsim -1$, resulting from the non-decoupling behaviour of (22). Notice also that for the parameters chosen in Figure 5, the upper limit of the probed four-lepton invariant masses $m_{4\ell} < 600 \text{ GeV}$ is safely below the UV cut-off $\Lambda = 4\pi f \simeq 9 \text{ TeV}$ of the twin-Higgs realisations of (1). Under the assumption that the UV completion that leads to the fermionic Higgs portal is strongly-coupled at the scale $\Lambda \simeq 4\pi f$, the tail of the $m_{4\ell}$ spectrum can therefore be reliably computed using the effective Lagrangian (3). Lastly, it is worth noting that the shapes of the $m_{4\ell}$ and D_S distributions obtained in the fermionic Higgs-portal model resemble, to a first approximation, the corresponding spectra in models where the total Higgs width Γ_h is modified but not the on-shell Higgs signal strengths — see Figure 8 in Appendix A of the publication [49].

3.2 Double-Higgs production

In order to be able to calculate cross sections for double-Higgs production the analytic results (16), (23) and (26) are implemented into MCFM 8.0. The relevant SM amplitudes are thereby taken from [61]. The graph depicted in Figure 6 illustrates how the signal strength (μ_{hh}) in the $pp \rightarrow hh$ channel varies with the Wilson coefficient c_ψ assuming a CM energy of $\sqrt{s} = 14 \text{ TeV}$. The used SM parameters and PDFs are identical to those employed in Section 3.1. However, in contrast to adjusting the renormalisation and factorisation scales individually for each event, we have set both scales to a constant value of $2m_h$. The presented fermion Higgs-portal models in (1) are based on the assumptions $f = 3v$ and m_ψ taking on values of 70 GeV (dashed red), 300 GeV (dashed blue) and 500 GeV (dashed green). The parameters $N_\psi = 3$, $\mu_* = 4\pi f$, $C_6(\mu_*) = C_{H\Box}(\mu_*) = 0$ in (16) and (26) were utilised to derive the plotted μ_{hh} values. It is important to stress again that the choice $C_6(\mu_*) = C_{H\Box}(\mu_*) = 0$ guarantees that the presented results remain unaffected by the particular UV completion of (1). This means that the results depend only on the logarithmically enhanced RG contributions, which are precisely calculable within the low-energy theory (3). In fact, the contributions to (16) and (26) solely arise from short-distance physics associated with scales between $\mu_* = 4\pi f$ and m_ψ . Notice finally that the total $pp \rightarrow hh$ cross section is dominated by the contributions close to the double-Higgs threshold $2m_h \simeq 250 \text{ GeV}$. Assuming that the UV completion that leads to (1) becomes strongly-coupled at $\Lambda \simeq 4\pi f \simeq 9 \text{ TeV}$, the signal strength μ_{hh} in double-Higgs production

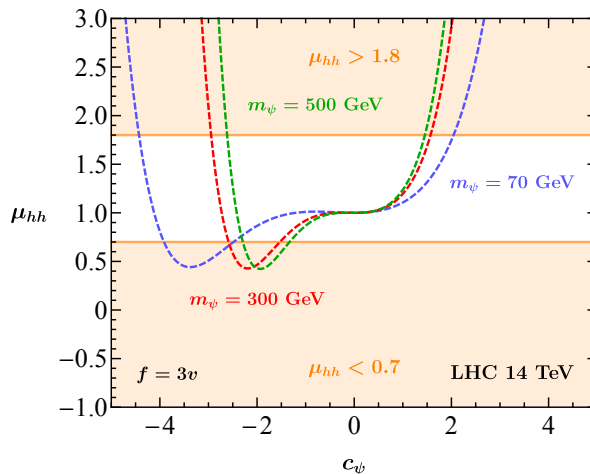


Figure 6: Signal strength for double-Higgs production at $\sqrt{s} = 14$ TeV as a function of the Wilson coefficient c_ψ in (1). The various coloured curves correspond to fermionic Higgs-portal scenarios with $f = 3v$ and the three different choices $m_\psi = 70$ GeV (dashed red), $m_\psi = 300$ GeV (dashed blue) and $m_\psi = 500$ GeV (dashed green). The orange-shaded regions represent areas excluded by the hypothetical experimental 95% CL constraint $\mu_{hh} \in [0.7, 1.8]$. Further details are provided in the main text.

can hence be calculated with confidence using the effective Lagrangian (3).

The orange regions are excluded by the CMS projection on the signal strength in double-Higgs production at the HL-LHC [62], implying $\mu_{hh} \in [0.7, 1.8]$ at the 95% confidence level (CL). Two notable features of the depicted $pp \rightarrow hh$ predictions warrant discussion. First, due to the c_ψ^3 and c_ψ^2 dependence of (26), the signal strengths are not symmetric under $c_\psi \leftrightarrow -c_\psi$. **Second, while the functional form of the signal strength in double-Higgs production depends on the precise value of the mass m_ψ , one can observe that in all depicted cases, μ_{hh} exhibits a pronounced minimum at negative c_ψ values and a shallow minimum at $c_\psi = 0$. It is important to realise that if the value of μ_{hh} at its minimum with $c_\psi < 0$ is incompatible with the experimentally allowed range, as is the case for all three m_ψ values shown in Figure 6, adjusting the value of c_ψ will always yield μ_{hh} values consistent with the experimental data. As we will see in Section 4, the functional dependence of μ_{hh} on both c_ψ and m_ψ leads to non-trivial shapes of the constraints on the fermionic Higgs portal (1) from future hadron collider measurements of $pp \rightarrow hh$ production. In particular, we find that for $c_\psi < 0$, there always exists a funnel in the $m_\psi - |c_\psi|$ plane which cannot be excluded by double-Higgs production because the signal strength μ_{hh} is SM-like.**

3.3 VBF Higgs production

Under the assumption that the additional fermions are stable on collider timescales or that they decay further into invisible particles, ψ pair production can be tested by looking for missing transverse energy ($E_{T,\text{miss}}$) signatures. In our work we focus on the VBF Higgs production channel since it was found to be more sensitive at hadron colliders than the mono-jet and $t\bar{t}h$ production modes for the marginal and derivative Higgs portals [12, 15, 19]. An example Feynman graph leading to the pair production of the new fermions in the VBF Higgs production channel is depicted in Figure 7.

We have generated both the signal and all the SM background processes at the parton

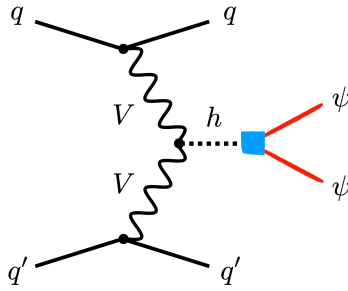


Figure 7: An example diagram leading to the pair production of the new fermions in the VBF Higgs production channel. The portal coupling (1) is indicated by the blue square.

level with `MadGraph5_aMCNLO` [63], showered the obtained events with `Pythia 8.2` [64] and passed them through the `Delphes 3` [65] fast detector simulation. The fermionic Higgs-portal predictions are generated at LO in QCD. The main background channels are $Z + \text{jets}$ and $W + \text{jets}$ production followed by the $Z \rightarrow \nu\bar{\nu}$ and $W \rightarrow \ell\nu$ decays, respectively. In both cases the jets can arise from QCD, like in the case of Drell-Yan (DY) production, or through electroweak (EW) interactions, like in the case of VBF gauge-boson production. For strong production we have generated $V + 2\text{jets}$ samples at NLO, while in the EW case our analysis relies on MLM matched [66] LO samples of $V + 2\text{jets}$ and $V + 3\text{jets}$ production. The interference between QCD and EW $V + \text{jets}$ production turns out to be tiny [67] and thus we have neglected it. Another relevant background is due to $t\bar{t}$ production. We have generated this background at LO including up to two jets using MLM matching. The normalisation of the $V + \text{jets}$ backgrounds is fixed by applying a rescaling factor that reproduces event yields of the CMS shape analysis [68] and the $t\bar{t}$ background is normalised to the state-of-the-art SM cross section computations [69, 70] that include NNLO and next-to-next-to-leading logarithmic effects. All LO and NLO samples have been generated with `NNPDF2.3LO` and `NNPDF2.3NLO` PDFs [71], respectively. For more information about the background simulation and validation see [15].

In our physics analysis we apply the following set of baseline cuts to both the signal and the background events:

$$E_{T,\text{miss}} > 80 \text{ GeV}, \quad N_j \geq 2, \quad p_{T,j_{1,2}} > 50 \text{ GeV}, \quad |\eta_{j_{1,2}}| < 4.7, \quad \eta_{j_1} \eta_{j_2} < 0, \quad (32)$$

$$N_\ell = 0, \quad N_j^{\text{central}} = 0, \quad \Delta\phi(\vec{p}_{T,j_1}, \vec{p}_{T,j_2}) < 2.2, \quad \Delta\phi(\vec{p}_{T,\text{miss}}, \vec{p}_{T,j}) > 0.5.$$

Here the number of light-flavoured jets and charged leptons is denoted by N_j and N_ℓ , respectively, j_1 and j_2 indicate the two jets with the largest p_T , $\Delta\phi$ denotes the azimuthal angular separation and $\vec{p}_{T,\text{miss}}$ is the vector sum of the transverse momenta of all invisible particles. The implementation of the lepton veto is identical to the one in the CMS analysis [68] and the central jet veto applies to additional jets with $p_{T,j} > 30 \text{ GeV}$ with $\min(\eta_{j_{1,2}}) < \eta_j < \max(\eta_{j_{1,2}})$ and the $\Delta\phi(\vec{p}_{T,\text{miss}}, \vec{p}_{T,j})$ cut affects any jet with $p_{T,j} > 30 \text{ GeV}$. We use the CMS card of `Delphes 3` for the fast detector simulation in our HL-LHC analysis.

The normalised distributions of the variables that provide the main handles to reject the SM backgrounds are shown in Figure 8. In the case of $E_{T,\text{miss}}$ we impose in our HL-LHC analysis $E_{T,\text{miss}} > 180 \text{ GeV}$ following the ATLAS search [67]. As can be seen from the upper left panel in the figure, the signal would prefer a milder cut on $E_{T,\text{miss}}$, however, we rely on $E_{T,\text{miss}}$ as a trigger and the trigger efficiency drops dramatically for lower values of $E_{T,\text{miss}}$. Notice that the shape of the $E_{T,\text{miss}}$ distribution of the signal is very similar to that of the dominant EW background. To separate the signal from the EW background

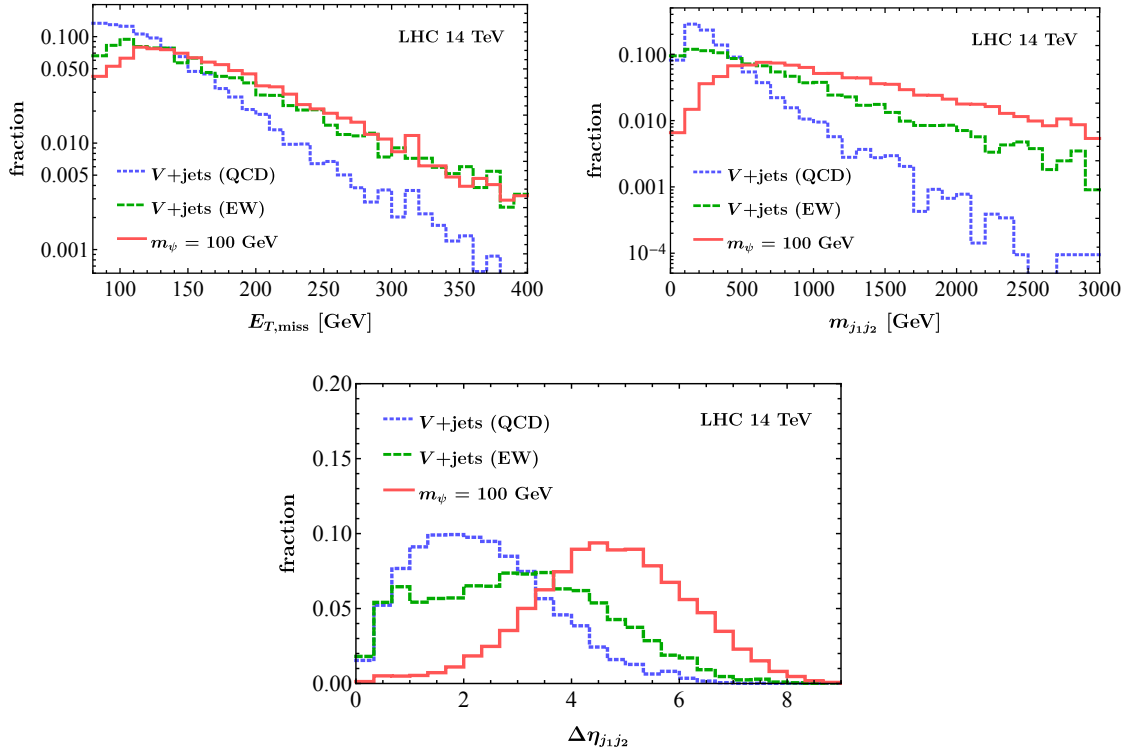


Figure 8: Normalised $E_{T,\text{miss}}$ (upper left), $m_{j_1j_2}$ (upper right) and $\Delta\eta_{j_1j_2}$ (lower) distributions for LHC collisions at a CM energy of $\sqrt{s} = 14$ TeV. The QCD V + jets (dashed blue) and EW V + jets (dotted green) backgrounds and the fermionic Higgs-portal signal with $m_\psi = 100$ GeV (solid red) are shown. Except for the $\Delta\eta_{j_1j_2}$ spectrum all distributions are subject to the basic selections (32). Additional details can be found in the main text.

we thus consider the invariant mass $m_{j_1j_2}$ and the pseudorapidity separation $\Delta\eta_{j_1j_2}$ of the two tagging jets characteristic for VBF-like signatures. The corresponding distributions are shown in the upper right and the lower panel of Figure 8, respectively. In order to exploit the discriminating power of $\Delta\eta_{j_1j_2}$ we require $\Delta\eta_{j_1j_2} > 4.2$ in our HL-LHC analysis and then optimise the $m_{j_1j_2}$ cut such that the significance is maximised, separately for each m_ψ hypothesis. Notice in this context that the differential $pp \rightarrow 2j + E_{T,\text{miss}}$ cross sections in the fermionic Higgs-portal model are all proportional to $N_\psi c_\psi^2 / f^2$ meaning that only the mass m_ψ of the new fermions changes the shape of the relevant kinematic distributions. After all cuts we typically end up with a sub-percent signal-to-background ratio implying that the analysis is systematics limited. In Section 4 where we study the collider reach of the VBF Higgs production channel, we will make different assumptions about the systematic uncertainties, following the methodology of the CERN Yellow report on the HL-LHC physics potential [72].

4 Collider reach: twin Higgs, $f = 3v$

Figure 9 provides a comparison of the HL-LHC reach of different search strategies in the $m_\psi - |c_\psi|$ plane, considering the full integrated luminosity of 3 ab^{-1} at $\sqrt{s} = 14$ TeV. We make the assumptions $N_\psi = 3$, $f = 3v$, $\mu_* = 4\pi f$ and $C_6(\mu_*) = C_{H\Box}(\mu_*) = 0$. In Appendix D we consider different non-zero initial conditions $C_6(\mu_*)$ and $C_{H\Box}(\mu_*)$. Notice

that the chosen f corresponds to the minimal value in twin-Higgs models that is consistent with existing experimental measurement, necessitating $v/f \lesssim 1/3$ [73]. Since the tuning amounts to roughly $2v^2/f^2$ in minimal twin-Higgs models [38, 74] the choice of $f = 3v$ implies only a very modest tuning of around 20% — we repeat our study for a more tuned twin-Higgs model in Appendix B. Notice that the used parameters correspond to a UV completion that becomes strongly-coupled at $\Lambda \simeq 4\pi f \simeq 9\text{ TeV}$, a scale that is well above the energies probed by the shown LHC search strategies. The solid blue line represents the 95% CL limits obtained from a binned-likelihood analysis of the ME-based kinematic discriminant (30), following the methodology of [27], with a systematic uncertainty assumed to be $\Delta = 4\%$. Conversely, the solid green line indicates the constraint derived from our investigation of off-shell Higgs-boson production in the VBF channel. Like in [72] our VBF analysis assumes a systematic uncertainty of $\Delta = 2\%$. For details on the statistical analyses see [15, 19, 27]. HL-LHC measurements of the global Higgs signal strength μ_h are anticipated to achieve an accuracy of $\Delta = 2.4\%$, accounting for the anticipated total systematic uncertainties [75]. Utilising the quoted precision together with $\mu_h = 1 + \delta Z_h$ and (16) leads at 95% CL to the solid red line. We note that the employed systematic uncertainties correspond to those called S2 in the CERN Yellow report on the HL-LHC physics potential [72]. In Appendix A we present results for the less optimistic scenario S1, which assumes that the HL-LHC systematic uncertainties are equal to those in LHC Run 2. The 95% CL bound $\kappa_\lambda \in [0.18, 3.6]$ on the modifications $\kappa_\lambda = \lambda/\lambda_{\text{SM}}$ of the trilinear Higgs coupling, as determined by the CMS projection [62], translates to $\mu_{hh} \in [0.7, 1.8]$ for the signal strength in $pp \rightarrow hh$ production at the HL-LHC. Based on our full one-loop calculation of double-Higgs production in the theory described by (3), we derive the solid and dashed orange lines corresponding to $c_\psi > 0$ and $c_\psi < 0$, respectively. Finally, the dashed black line represents the naturalness condition (2) while the black dot indicates the point $\{m_\psi, |c_\psi|\} = \{y_t f/\sqrt{2}, y_t/\sqrt{2}\} \simeq \{490\text{ GeV}, 0.7\}$, which corresponds to the naturalness bound (2) in the special case of a standard twin Higgs model.

A comparison of the 95% CL constraints displayed in Figure 9 shows that in twin-Higgs realisations of (3) the indirect probes, i.e. D_S , μ_{hh} and μ_h , provide notably more stringent bounds in the $m_\psi - |c_\psi|$ plane than the direct search for ψ pair production in the VBF Higgs production channel. This feature is a consequence of the higher-dimensional nature of (1) that leads to large logarithmic effects that are associated to the RG evolution of Q_6 and $Q_{H\Box}$ — cf. (5) and (6). These operators enter the quantum version (3) of the fermionic Higgs-portal Lagrangian and are needed to renormalise (1) at the one-loop level, and thus are necessary for a consistent computation of loop-induced processes such as $gg \rightarrow h^* \rightarrow ZZ$ or $gg \rightarrow hh$. Tree-level processes like $q\bar{q}' \rightarrow q\bar{q}' h^* \rightarrow q\bar{q}' \psi\bar{\psi}$ can, on the other hand, be consistently calculated using (1) and as a result, at the Born level, they remain insensitive to the logarithmically enhanced effects associated to the quantum structure of the theory. It is also evident from the figure that while the constraints arising from $pp \rightarrow h^* \rightarrow ZZ$ and $pp \rightarrow h$ decouple slowly with increasing m_ψ , the $pp \rightarrow hh$ limits tend to become stronger for larger m_ψ values. This behaviour is readily understood by noticing that while (16) and (21) contain logarithms of the form $c_\psi^2 \ln(\mu_*^2/m_\psi^2)$, the correction (28) entails terms that scale as $c_\psi^3 (m_\psi/f) \ln(\mu_*^2/m_\psi^2)$. **Notice that which indirect constraint provides the best bound depends on both the value of m_ψ and the sign of c_ψ .** In the case of $c_\psi > 0$ the limit from D_S (μ_h) turns out to be stronger for $m_\psi \lesssim 360\text{ GeV}$ ($m_\psi \lesssim 500\text{ GeV}$) while for larger masses the observable μ_{hh} represents the best constraint. For $c_\psi < 0$ the corresponding limits are $m_\psi \lesssim 340\text{ GeV}$ and $m_\psi \lesssim 400\text{ GeV}$, respectively. The dependence of the $gg \rightarrow hh$ amplitude on c_ψ and m_ψ furthermore leads for $c_\psi < 0$ to a funnel in the $m_\psi - |c_\psi|$ plane which cannot be excluded by double-Higgs production because the signal strength μ_{hh} is SM-like — for details see

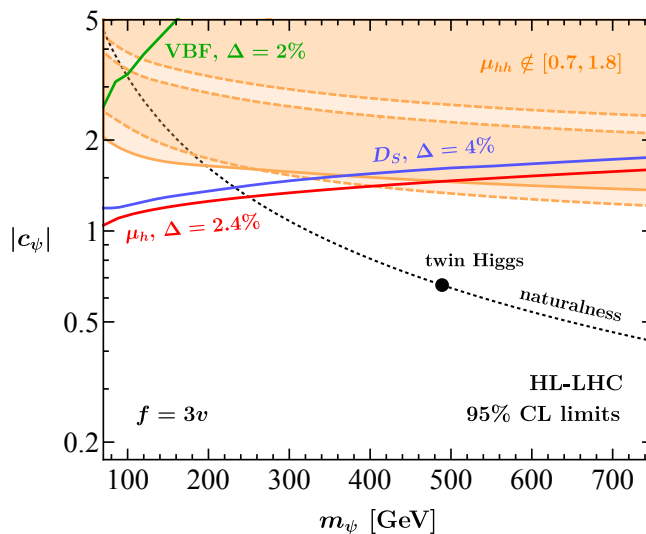


Figure 9: HL-LHC reach of different search strategies in the m_ψ - $|c_\psi|$ plane corresponding to the assumptions $N_\psi = 3$, $f = 3v$, $\mu_* = 4\pi f$ and $C_6(\mu_*) = C_{H\Box}(\mu_*) = 0$. The solid blue, solid green and solid red lines represent the 95% CL limits derived from our D_S analysis, our study of the VBF Higgs production channel and a hypothetical measurement of the global Higgs signal strength μ_h , respectively. The assumed systematic uncertainties or accuracies, when applicable, are indicated. Regions above the coloured lines are disfavoured. The region bound by the solid (dashed) orange line arises from imposing that the signal strength in double-Higgs production satisfies $\mu_{hh} \notin [0.7, 1.8]$ for $c_\psi > 0$ ($c_\psi < 0$). The naturalness bound (2) is represented by the dotted black line, while the point $\{m_\psi, |c_\psi|\} = \{y_t f / \sqrt{2}, y_t / \sqrt{2}\} \simeq \{490 \text{ GeV}, 0.7\}$, corresponding to (2) for the special case of a standard twin-Higgs model, is displayed as a black dot. More details are provided in the main text.

the discussion in Section 3.2. Notice finally that all constraints shown in Figure 9 depend in a non-negligible way on the assumed systematic uncertainties or accuracies. In view of these caveats one can conclude that to fully exploit the HL-LHC potential in probing fermionic Higgs-portal interactions of the form (1) one should consider all indirect and direct probes displayed in the figure. If this is done one sees that it should be possible to explore fermionic Higgs-portal models (1) that are compatible with the naturalness bound (2) for fermion masses in the range of $m_\psi \in [62.5, 250] \text{ GeV}$. Unfortunately, this implies that the point $\{m_\psi, |c_\psi|\} = \{y_t f / \sqrt{2}, y_t / \sqrt{2}\} \simeq \{490 \text{ GeV}, 0.7\}$, representing a natural standard twin-Higgs model with $f = 3v$, cannot be probed at the HL-LHC.

In our HE-LHC (FCC) study, we consider pp collisions at $\sqrt{s} = 27 \text{ TeV}$ ($\sqrt{s} = 100 \text{ TeV}$) and an integrated luminosity of 15 ab^{-1} (30 ab^{-1}). While we expand the $m_{4\ell}$ window to 1000 GeV (1500 GeV) at the HE-LHC (FCC), the selection cuts and detection efficiencies in our analyses mirror those outlined in Section 2.4. Technical improvements in the HE-LHC and FCC detectors, such as extended pseudorapidity coverages [76, 77], which could enhance the reach of the off-shell Higgs-boson production channel, are not considered in what follows. Additionally, we use the values of the K -factors provided in Section 2.4, obtained for LHC collisions, to calculate QCD-improved predictions for the kinematic variable D_S à la (31). Given that the assumed systematic uncertainties play a significant role in determining the HE-LHC and FCC reach for constraining fermionic Higgs-portal interactions of the form (1), we consider these simplifications fully justified. In our HE-

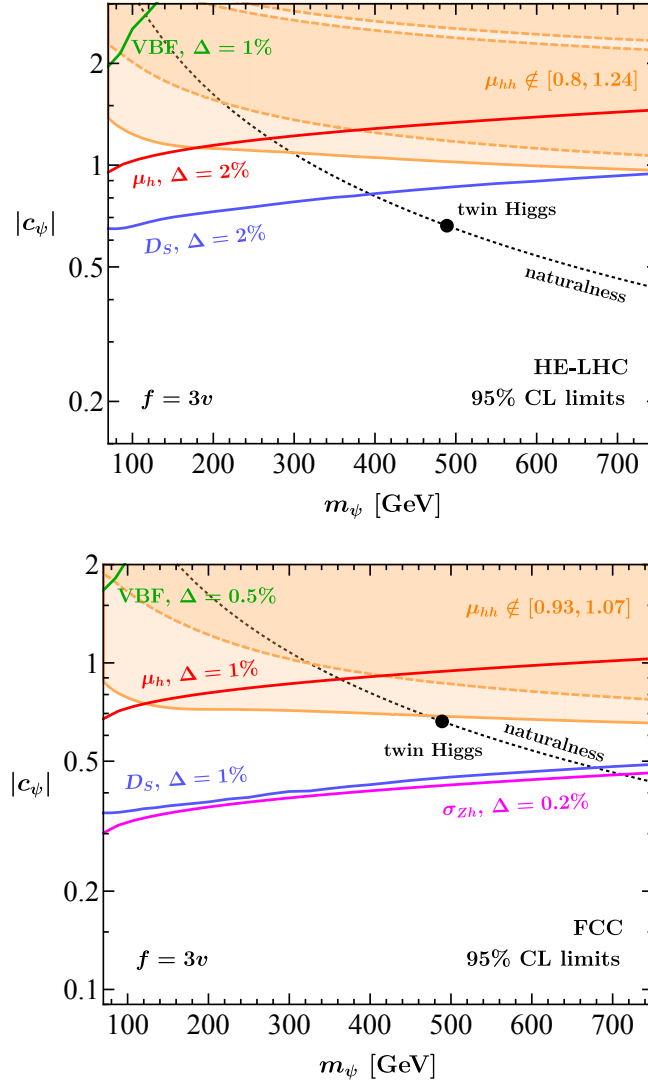


Figure 10: Projected reach of different search strategies in the m_ψ - $|c_\psi|$ plane for the HE-LHC (upper panel) and FCC (lower panel). The presented constraints are based on $N_\psi = 3$, $f = 3v$, $\mu_* = 4\pi f$ and $C_6(\mu_*) = C_{H\Box}(\mu_*) = 0$. In addition to the constraints illustrated in Figure 9, the FCC case features an additional solid magenta line representing the 95% CL limit derived from a precision measurement of the Zh production cross section (σ_{Zh}). The colour scheme and interpretation of the remaining constraints mirror those presented in the previous figure. Consult the main text for additional explanations.

LHC analysis of VBF off-shell Higgs production the baseline cuts (32) remain unchanged with the exception that we now require $|\eta_{j_{1,2}}| < 4.9$. We additionally increase the missing transverse energy cut to $E_{T,\text{miss}} > 200$ GeV. The selections imposed in the FCC VBF analysis resemble those used at the HE-LHC apart from that we allow for tagging jets up to $|\eta_{j_{1,2}}| < 6$. Our fast detector simulation at the HE-LHC (FCC) employs the HL-LHC (FCC) Delphes 3 card.

The HE-LHC and FCC sensitivities of various search strategies for the fermionic Higgs-portal coupling (1) are presented in the two panels of Figure 10. Similar to our HL-LHC study, different systematic uncertainties are assumed for individual search channels. For our $gg \rightarrow h^* \rightarrow ZZ$ analysis, we consider $\Delta = 2\%$ and $\Delta = 1\%$ as the systematic

uncertainties at the HE-LHC and FCC, respectively. Given a target precision at the FCC of 1.8% in the $pp \rightarrow ZZ \rightarrow 4\ell$ channel [78], and considering potential advancements in theory and experiment, a final systematic uncertainty of 2% (1%) at the HE-LHC (FCC) appears conceivable. Regarding the global Higgs signal strength μ_h , we employ $\Delta = 2\%$ and $\Delta = 1\%$ [78] at the HE-LHC and FCC, respectively. The anticipated 95% CL bounds on modifications of the trilinear Higgs coupling at these two colliders are expected to be $\kappa_\lambda \in [0.7, 1.3]$ and $\kappa_\lambda \in [0.9, 1.1]$ — see for example [72, 79, 80] for detailed discussions. These constraints translate into limits of $\mu_{hh} \in [0.80, 1.24]$ and $\mu_{hh} \in [0.93, 1.07]$ on the signal strength in double-Higgs production. In the case of the VBF off-shell Higgs production study we instead employ $\Delta = 1\%$ and $\Delta = 0.5\%$ at the HE-LHC and the FCC, respectively. In Appendix A we present HE-LHC and FCC projections for $pp \rightarrow h^* \rightarrow ZZ$ and $pp \rightarrow 2jh^* \rightarrow 2j\psi\bar{\psi}$, making less optimistic assumptions about the future systematic uncertainties of these two search channels.

The first take-home message from Figure 10 is that the reach of the studied direct search strategy is in general not competitive with the considered indirect tests. The basic reason is again that the loop-induced processes receive logarithmically enhanced effects from Q_6 and $Q_{H\Box}$ which are absent in all tree-level transitions that only probe (1) directly. Another interesting feature that one observes from Figure 10 is that for the same systematic uncertainties the constraints arising from the off-shell Higgs-boson measurements are more stringent than the limits that follow from the on-shell Higgs-boson signal strength. The enhanced sensitivity from D_S compared to μ_h originates from the fact that the former observable is sensitive to events that lie in the tails of the kinematic distributions, while such events have only a limited weight in the total Higgs production cross sections. To further illustrate the latter feature we show in the case of the FCC the exclusion that follows from an extraction of the signal strength in $e^+e^- \rightarrow Zh$ with an accuracy of $\Delta = 0.2\%$ as a solid magenta line. It is conceivable that an electron-positron (e^+e^-) precursor of the FCC, operating at a CM energy of $\sqrt{s} = 240$ GeV with an integrated luminosity of 5 ab^{-1} [81], could achieve this accuracy. From the lower panel in Figure 10 it is evident that only such a precision e^+e^- measurement would allow to set stronger bounds than the hypothetical FCC measurement of off-shell Higgs production in pp collisions considered by us. Notice finally that in the case of $f = 3v$ the HE-LHC (FCC) is likely to be able to provide coverage of the $|c_\psi|$ values of natural fermionic Higgs-portal models of the form (1) for $m_\psi \in [62.5, 400]$ GeV ($m_\psi \in [62.5, 700]$ GeV). As a result, only the FCC is expected to allow to test the point $\{m_\psi, |c_\psi|\} = \{y_t f / \sqrt{2}, y_t / \sqrt{2}\} \simeq \{490 \text{ GeV}, 0.7\}$, which represents the case of a natural standard twin-Higgs model with $f = 3v$. Further studies of the collider reach employing two different choices for N_ψ , f and μ_* are presented in Appendix B and Appendix C, respectively.

5 Conclusions

In this article, we have investigated the extent to which upcoming measurements from hadron colliders can detect and limit the strength of the fermionic Higgs portal (1). Our focus lies on scenarios where the new fermions cannot be observed through exotics decays of the 125 GeV Higgs boson. These portals emerge in models of neutral naturalness such as twin-Higgs scenarios as well as in Higgs-portal DM models, presenting significant challenges for detections at colliders. To keep the discussion as model-independent as possible, we worked in the context of an EFT in which the fermionic Higgs portal is augmented by the dimension-six operators Q_6 and $Q_{H\Box}$ — see (3) and (4). As we have explained in detail, once radiative corrections are considered in the context of (1), the resulting

quantum theory unavoidably contains Q_6 and $Q_{H\Box}$. In fact, at the one-loop level and up to dimension six, only the latter two operators emerge, making (3) the minimal EFT that allows to consistently calculate off-shell and double-Higgs production in fermionic Higgs-portal models.

Our one-loop computations of the $gg \rightarrow h^* \rightarrow ZZ \rightarrow 4\ell$ and $gg \rightarrow hh$ processes in the context of (3) have been implemented into MCFM 8.0. This Monte Carlo generator has then been used to study the reach of the HL-LHC, the HE-LHC and the FCC in constraining the fermionic Higgs portal via off-shell and double-Higgs production. We found that in the fermionic Higgs-portal scenario, the high-energy tails of relevant kinematic distributions in both off-shell and double-Higgs production are enhanced. This enhancement stems from the higher-dimensional nature of (1), necessitating the inclusion of dimension-six operators in the computation of $gg \rightarrow h^* \rightarrow ZZ$ and $gg \rightarrow hh$ amplitudes to ensure UV finiteness. Consequently, the RG flow of the corresponding Wilson coefficients induces logarithmically enhanced corrections, altering the $gg \rightarrow h^* \rightarrow ZZ$ and $gg \rightarrow hh$ matrix elements and thereby influencing the resulting kinematic distributions in a non-trivial manner. As a result, quantum enhanced indirect probes such as off-shell and double-Higgs production in general provide a better sensitivity to interactions of the form (1) than direct probes like VBF Higgs production. This observation holds particularly true for low-energy realisations of (1), which originate from theories like twin-Higgs models that are characterised by a strong-coupling UV regime. **The sensitivity of off-shell and double-Higgs production to the initial conditions of the Wilson coefficients of Q_6 and $Q_{H\Box}$ is discussed in Appendix D.**

Before drawing the curtain let us compare the main findings obtained in this work to the global picture of constraints that emerges in the case of the marginal Higgs-portal model [11, 12, 15, 19, 24–27]. The main difference between the collider phenomenology in the fermionic and the marginal Higgs-portal model is that in the latter BSM model the direct constraints that arise from processes such as $pp \rightarrow 2jh^* \rightarrow 2j\psi\bar{\psi}$ and $pp \rightarrow t\bar{t}h^* \rightarrow t\bar{t}\psi\bar{\psi}$ are often more important than those that stem from indirect tests associated to loop processes such as $pp \rightarrow h^* \rightarrow ZZ \rightarrow 4\ell$ or $pp \rightarrow hh$. This is a simple consequence of the fact that unlike (1) the marginal Higgs-portal model can be renormalised without the need to introduce higher-dimensional operators. The large logarithmic effects that appear in the calculation of Higgs-boson observables in the context of the fermionic Higgs portal are therefore not present in the marginal case. Notice that on general grounds, the logarithmic enhancement of loop effects is also expected in the case of the vector or kinetic Higgs-portal model. We leave studies of the loop-induced collider phenomenology in these models for future research.

Acknowledgements

We thank Ennio Salvioni for collaboration in the initial stage of this project. His useful comments concerning the first version of this manuscript are also acknowledged. MR is supported in part by the NSF grant PHY-2014071 and by a Feodor-Lynen Research Fellowship awarded by the Humboldt Foundation. The work of KS and AW has been partially supported by the DFG Cluster of Excellence 2094 ORIGINS, the Collaborative Research Center SFB1258 and the BMBF grant 05H18WOCA1.

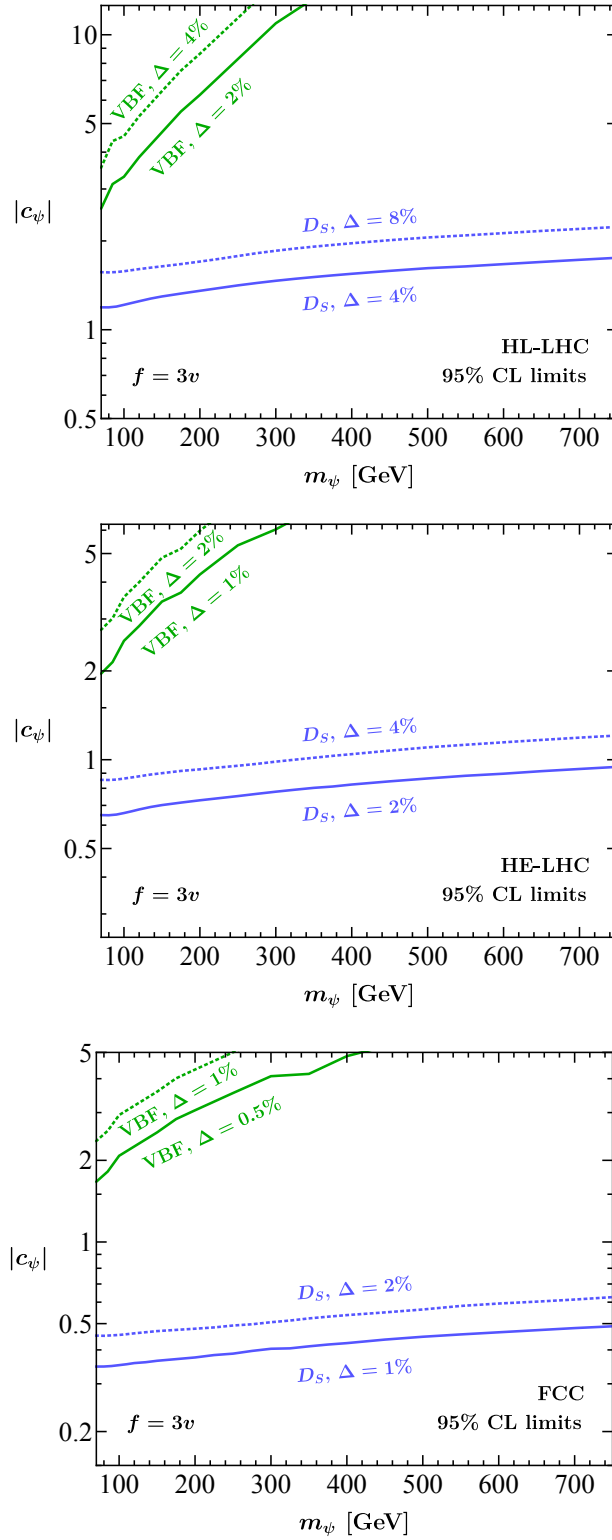


Figure 11: Reach of off-shell (blue) and VBF (green) Higgs production in the m_ψ - $|c_\psi|$ plane for the HL-LHC (upper panel), HE-LHC (middle panel) and FCC (lower panel). The shown results are based on $N_\psi = 3$, $f = 3v$, $\mu_* = 4\pi f$ and $C_6(\mu_*) = C_{H\Box}(\mu_*) = 0$. The assumed systematic uncertainties are indicated in each case.

A Systematic uncertainties

In this appendix, we examine how different assumptions on the systematic uncertainties in the off-shell and VBF Higgs production channels affect the constraints on the parameter space of the fermionic Higgs-portal model (1). The fact that the assumptions on the systematic uncertainties Δ play a crucial role in constraining the m_ψ - $|c_\psi|$ parameter space using both off-shell and VBF Higgs production is illustrated in Figure 11. The shown results are based on $N_\psi = 3$, $f = 3v$, $\mu_* = 4\pi f$ and $C_6(\mu_*) = C_{H\Box}(\mu_*) = 0$, i.e. the very same parameters studied before in Section 4. In the case of the HL-LHC the employed systematic uncertainties correspond to the scenarios called S1 and S2 in the CERN Yellow report on the HL-LHC physics potential [72], while for what concerns the HE-LHC and FCC we rely on the FCC physics opportunities study [78]. The first observation is that the gain in sensitivity when halving the assumed systematic uncertainties is to first approximation independent of the mass m_ψ for both the D_S analysis of $pp \rightarrow ZZ \rightarrow 4\ell$ as well as our $pp \rightarrow 2j\psi\bar{\psi}$ search strategy. Second, the impact of reducing the systematic uncertainties is also largely independent of the considered collider. Numerically, halving Δ leads to relative improvements in the bounds on $|c_\psi|$ of around 20% and 30% in the case of off-shell and VBF Higgs production, respectively. Finally, it is worth noting that the constraints on the m_ψ - $|c_\psi|$ plane derived from off-shell and VBF Higgs production both exhibit a noticeable sensitivity to the assumed systematic uncertainties. However, regardless of the uncertainty scenario considered, the limits derived from $pp \rightarrow ZZ \rightarrow 4\ell$ are consistently stronger than those originating from $pp \rightarrow 2j\psi\bar{\psi}$.

B Collider reach: twin Higgs, $f = 6v$

In Section 4, we have performed a comprehensive study of the collider reach for the fermionic Higgs-portal model (1) assuming parameters that are appropriate to capture the phenomenology of a twin-Higgs model with a low value of f and a very modest tuning of about 20%. Below we repeat our analysis for the choices $N_\psi = 3$, $f = 6v$, $\mu_* = 4\pi f$ and $C_6(\mu_*) = C_{H\Box}(\mu_*) = 0$. These parameters correspond to a twin-Higgs model with a tuning of about $2v^2/f^2 \simeq 5\%$. Note that the parameters employed describe a UV completion, which becomes strongly coupled at $\Lambda \simeq 4\pi f \simeq 18$ TeV, a scale significantly higher than the energies probed by the relevant LHC search strategies. Our projections of the HL-LHC (upper panel), HE-LHC (middle panel) and FCC (lower panel) reach are summarised in Figure 12. Compared to the results shown in Figure 9 and Figure 10 that employ $f = 3v$, one observes that for $f = 6v$ the parameter region in the m_ψ - $|c_\psi|$ plane that can be explored at a given hadron collider is significantly reduced. In fact, in the case of the VBF limits the bounds on $|c_\psi|$ are weaker by a factor of 2, while in the case of D_S , μ_h and σ_{Zh} the constraints are less stringent by a factor of around 1.8. This difference is easy to understand qualitatively by noticing that the former observable scales as $c_\psi^2 (v^2/f^2)$ while the latter observables involve terms of the form $c_\psi^2 (v^2/f^2) \ln(\mu_*^2/m_\psi^2)$. **Another feature that is clearly visible in all panels is that the constraints from double-Higgs production become more stringent with increasing fermion mass m_ψ . This behaviour is again a result of (28) containing terms that scale as $c_\psi^3 (m_\psi/f) \ln(\mu_*^2/m_\psi^2)$ which provide the dominant contribution to $pp \rightarrow hh$ production if m_ψ approaches f . Notice furthermore that the obtained direct limits are not competitive with the indirect constraints. The three panels also show that for $f = 6v$ it should be possible to explore fermionic Higgs-portal models (1) that are compatible with the naturalness bound (2) for fermion masses in the range of $m_\psi \in [62.5, 300]$ GeV, $m_\psi \in [62.5, 420]$ GeV and $m_\psi \in [62.5, 800]$ GeV at the HL-LHC, the**

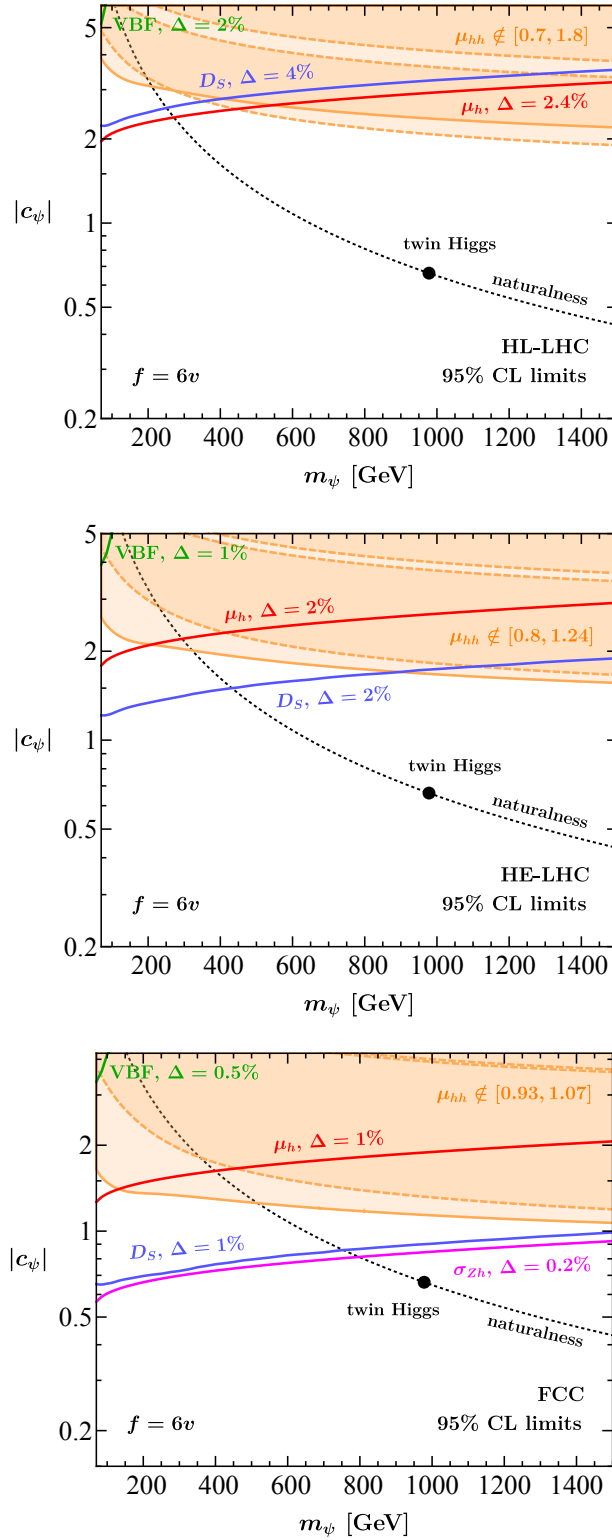


Figure 12: As Figure 9 and Figure 10 but assuming $N_\psi = 3$, $f = 6v$, $\mu_* = 4\pi f$ and $C_6(\mu_*) = C_{H\Box}(\mu_*) = 0$. Notice that all constraints following from VBF off-shell Higgs production include only statistical uncertainties. Additional details can be found in the main text.

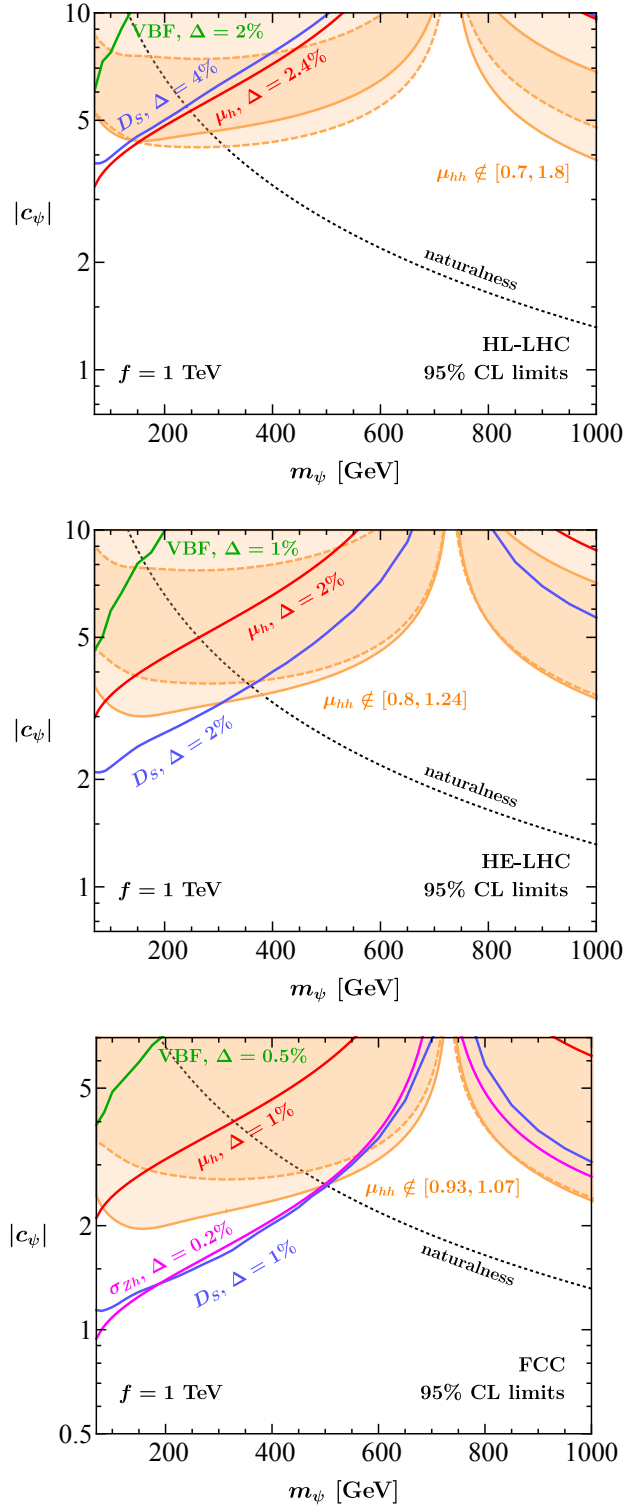


Figure 13: As Figure 12 but with $N_\psi = 1$, $f = 1$ TeV, $\mu_* = f$ and $C_6(\mu_*) = C_{H\Box}(\mu_*) = 0$. The assumed systematic uncertainties or accuracies are indicated. See the main text for more explanations.

HE-LHC and the FCC, respectively. These results imply that even the FCC will probably not be able to test the point $\{m_\psi, |c_\psi|\} = \{y_t f / \sqrt{2}, y_t / \sqrt{2}\} \simeq \{980 \text{ GeV}, 0.7\}$, which

represents the case of a natural standard twin-Higgs model with $f = 6v$. In this context, it is important to recall that our analysis of double-Higgs production depends entirely on the signal strength of the fully inclusive cross section. By performing measurements of differential distributions in $pp \rightarrow hh$, such as the invariant di-Higgs mass m_{hh} , it might be possible to improve the bounds derived from double-Higgs production. However, such an analysis is beyond the scope of our article.

C Collider reach: DM Higgs portal

In Section 4 and Appendix B, we have studied two realisations of (1) employing choices of N_ψ , f and μ_* that allow to model the dynamics of standard twin-Higgs scenarios. In both cases we have made the choices $\mu_* = 4\pi f$ and $C_6(\mu_*) = C_{H\Box}(\mu_*) = 0$. We now give up on the assumption that the UV cut-off scale Λ is larger than f by a loop factor as naturally expected in strongly-coupled theories. For weakly-coupled models one instead expects $\Lambda \simeq f$, and therefore we choose $f = 1$ TeV, $\mu_* = f$ and $C_6(\mu_*) = C_{H\Box}(\mu_*) = 0$ to model this case. In order to make contact with the fermionic Higgs-portal models considered in invisible Higgs-boson decays at the LHC — see [82, 83] for the latest ATLAS and CMS searches of this kind — we furthermore employ $N_\psi = 1$. The HL-LHC (upper panel), HE-LHC (middle panel) and FCC (lower panel) projections corresponding to the above parameter choices are displayed in Figure 13. Compared to the results shown in Figures 9, 10 and 12 one obvious difference is the shape of the D_S , μ_h , σ_{Zh} and μ_{hh} constraints. While in the studied twin-Higgs scenarios these observables are fully dominated by the logarithmically enhanced corrections of the form $c_\psi^2 (v^2/f^2) \ln(\mu_*^2/m_\psi^2)$ or $c_\psi^3 (m_\psi/f) \ln(\mu_*^2/m_\psi^2)$ this is not the case in the considered DM Higgs-portal model because the UV cut-off scale is only taken to be $\mu_* = f$ and not $\mu_* = 4\pi f$. In fact, for the parameter choices $N_\psi = 1$, $f = 1$ TeV, $\mu_* = f$ and $C_6(\mu_*) = C_{H\Box}(\mu_*) = 0$ the individual terms in (16), (21) and (28) tend to cancel for $m_\psi \simeq 700$ GeV, and this explains why the D_S , μ_h , σ_{Zh} and μ_{hh} constraints weaken notably for ψ masses in this vicinity. It is also evident from all three panels that the obtained direct limits are in general weaker than the constraints that stem from the studied quantum enhanced indirect probes. One furthermore sees that fermionic DM Higgs-portal models (1) that comply with the naturalness condition (2) can be explored for $m_\psi \in [62.5, 300]$ GeV, $m_\psi \in [62.5, 400]$ GeV and $m_\psi \in [62.5, 500]$ GeV at the HL-LHC, the HE-LHC and the FCC, respectively. Given the complementarity of the indirect constraints shown in the three panels of Figure 13, it should be clear that in order to exploit the full potential of the HL-LHC, HE-LHC and FCC in testing fermionic Higgs-portal interactions requires a multi-prong approach that consists in studying various Higgs observables such as D_S , μ_h , σ_{Zh} and μ_{hh} .

D Model dependence in twin-Higgs models

Until now we have always assumed that the Wilson coefficients of the operators Q_6 and $Q_{H\Box}$ introduced in (4) vanish identically at the high-energy matching scale μ_* , meaning that we have always taken $C_6(\mu_*) = C_{H\Box}(\mu_*) = 0$ in our numerical analyses. In order to study the model dependence of our twin-Higgs predictions, we are now abandoning this assumption.

In the case that the interactions (3) arise from the UV embedding into a minimal twin-Higgs model, one can calculate the initial conditions $C_6(\mu_*)$ and $C_{H\Box}(\mu_*)$. Including all tree-level effects as well as the loop corrections that are enhanced by either the top-quark

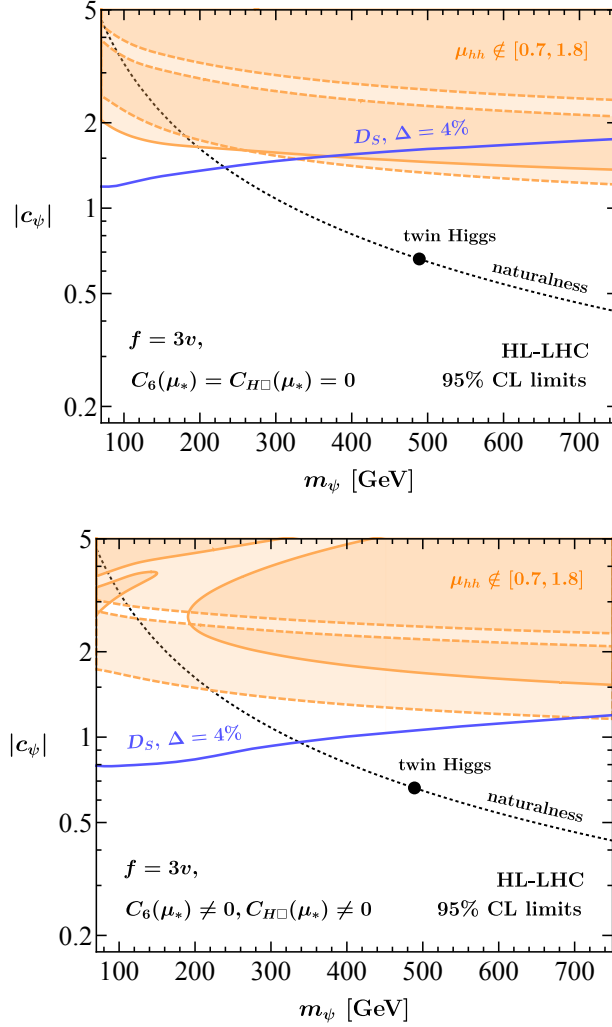


Figure 14: HL-LHC reach of the variable D_S and the signal strength μ_{hh} . All displayed constraints utilise $N_\psi = 3$, $f = 3v$ and $\mu_* = 4\pi f$. In the upper panel, we furthermore assume that $C_6(\mu_*) = C_{H\Box}(\mu_*) = 0$, while in the lower panel, we instead employ the initial conditions (33). Consult the main text for more details.

Yukawa coupling y_t or the fermionic Higgs-portal coupling c_ψ , we find

$$C_6(\mu_*) = \frac{1}{f^2} \left[\frac{2m_h^2}{3v^2} + \frac{y_t^4 - 2c_\psi^4}{4\pi^2} \right], \quad C_{H\Box}(\mu_*) = \frac{1}{2f^2}. \quad (33)$$

Note that in the above initial conditions, we have separated the contribution from top-quark loops, which are proportional to y_t^4 , and top-quark partner loops, which are proportional to $\hat{y}_t^4 = 4c_\psi^4$, to the effective potential. In a natural twin-Higgs model, one has $\hat{y}_t = y_t$. However, since $c_\psi = -\hat{y}_t/\sqrt{2}$, a modification of c_ψ directly translates into a modification of \hat{y}_t , which in turn also affects the contribution to the effective potential from top-quark partner loops.

In Figure 14 we repeat the analysis performed at the beginning of Section 4, utilising the initial conditions (33) instead of $C_6(\mu_*) = C_{H\Box}(\mu_*) = 0$. The rest of the input parameters agrees with those used in Figure 9. In the case of the variable D_S , one sees that the bound that is obtained using the non-zero initial conditions given in (33) is

stronger than the one that derives from $C_6(\mu_*) = C_{H\Box}(\mu_*) = 0$. In fact, this feature is readily understood by noting that the two terms in (22) interfere constructively for all UV realisations of (3) that predict $C_{H\Box}(\mu_*) > 0$. In twin-Higgs models, the positivity of the initial condition $C_{H\Box}(\mu_*)$ is a model-independent prediction. Consequently, setting $C_{H\Box}(\mu_*) = 0$ yields D_S limits that serve as conservative upper bounds on $|c_\psi|$, expected to apply broadly across twin-Higgs scenarios. In the case of the constraints that follow from the signal strength μ_{hh} , it is evident from Figure 14 that for $c_\psi < 0$ the bounds that are obtained for $C_6(\mu_*) = C_{H\Box}(\mu_*) = 0$ and (33) are very similar. For $c_\psi > 0$ one instead observes that the exclusions are notably different. The difference is due to the interplay of the c_ψ^3 terms in (28) and the c_ψ^4 terms in (33), which tend to cancel for certain values of m_ψ , leading to funnels in the $m_\psi - |c_\psi|$ plane. Based on the aforementioned findings, we argue that setting the initial conditions $C_6(\mu_*)$ and $C_{H\Box}(\mu_*)$ to zero as done in Section 4 is justified. This approach offers conservative and relatively model-independent constraints applicable to general twin-Higgs models.

References

- [1] G. Aad *et al.*, *Observation of a new particle in the search for the Standard Model Higgs boson with the ATLAS detector at the LHC*, Phys. Lett. B **716**, 1 (2012), doi:[10.1016/j.physletb.2012.08.020](https://doi.org/10.1016/j.physletb.2012.08.020), [1207.7214](https://arxiv.org/abs/1207.7214).
- [2] S. Chatrchyan *et al.*, *Observation of a New Boson at a Mass of 125 GeV with the CMS Experiment at the LHC*, Phys. Lett. B **716**, 30 (2012), doi:[10.1016/j.physletb.2012.08.021](https://doi.org/10.1016/j.physletb.2012.08.021), [1207.7235](https://arxiv.org/abs/1207.7235).
- [3] *Combined Higgs boson production and decay measurements with up to 137 fb⁻¹ of proton-proton collision data at $\sqrt{s} = 13$ TeV* (2020), CMS-PAS-HIG-19-005.
- [4] *A combination of measurements of Higgs boson production and decay using up to 139 fb⁻¹ of proton-proton collision data at $\sqrt{s} = 13$ TeV collected with the ATLAS experiment* (2020), ATLAS-CONF-2020-027.
- [5] S. Schael *et al.*, *Precision electroweak measurements on the Z resonance*, Phys. Rept. **427**, 257 (2006), doi:[10.1016/j.physrep.2005.12.006](https://doi.org/10.1016/j.physrep.2005.12.006), [hep-ex/0509008](https://arxiv.org/abs/hep-ex/0509008).
- [6] S. Argyropoulos, O. Brandt and U. Haisch, *Collider Searches for Dark Matter through the Higgs Lens*, Symmetry **13**(12), 2406 (2021), doi:[10.3390/sym13122406](https://doi.org/10.3390/sym13122406), [2109.13597](https://arxiv.org/abs/2109.13597).
- [7] S. Matsumoto, K. Fujii, T. Honda, S. Kanemura, T. Nabeshima, N. Okada, Y. Takubo and H. Yamamoto, *Observing the Coupling between Dark Matter and Higgs Boson at the ILC*, In *International Linear Collider Workshop* (2010), [1006.5268](https://arxiv.org/abs/1006.5268).
- [8] S. Kanemura, S. Matsumoto, T. Nabeshima and H. Taniguchi, *Testing Higgs portal dark matter via Z fusion at a linear collider*, Phys. Lett. B **701**, 591 (2011), doi:[10.1016/j.physletb.2011.06.040](https://doi.org/10.1016/j.physletb.2011.06.040), [1102.5147](https://arxiv.org/abs/1102.5147).
- [9] Z. Chacko, Y. Cui and S. Hong, *Exploring a Dark Sector Through the Higgs Portal at a Lepton Collider*, Phys. Lett. B **732**, 75 (2014), doi:[10.1016/j.physletb.2014.03.010](https://doi.org/10.1016/j.physletb.2014.03.010), [1311.3306](https://arxiv.org/abs/1311.3306).
- [10] M. Endo and Y. Takaesu, *Heavy WIMP through Higgs portal at the LHC*, Phys. Lett. B **743**, 228 (2015), doi:[10.1016/j.physletb.2015.02.042](https://doi.org/10.1016/j.physletb.2015.02.042), [1407.6882](https://arxiv.org/abs/1407.6882).

- [11] D. Curtin, P. Meade and C.-T. Yu, *Testing Electroweak Baryogenesis with Future Colliders*, JHEP **11**, 127 (2014), doi:[10.1007/JHEP11\(2014\)127](https://doi.org/10.1007/JHEP11(2014)127), [1409.0005](https://arxiv.org/abs/1409.0005).
- [12] N. Craig, H. K. Lou, M. McCullough and A. Thalapillil, *The Higgs Portal Above Threshold*, JHEP **02**, 127 (2016), doi:[10.1007/JHEP02\(2016\)127](https://doi.org/10.1007/JHEP02(2016)127), [1412.0258](https://arxiv.org/abs/1412.0258).
- [13] P. Ko and H. Yokoya, *Search for Higgs portal DM at the ILC*, JHEP **08**, 109 (2016), doi:[10.1007/JHEP08\(2016\)109](https://doi.org/10.1007/JHEP08(2016)109), [1603.04737](https://arxiv.org/abs/1603.04737).
- [14] D. Buttazzo, D. Redigolo, F. Sala and A. Tesi, *Fusing Vectors into Scalars at High Energy Lepton Colliders*, JHEP **11**, 144 (2018), doi:[10.1007/JHEP11\(2018\)144](https://doi.org/10.1007/JHEP11(2018)144), [1807.04743](https://arxiv.org/abs/1807.04743).
- [15] M. Ruhdorfer, E. Salvioni and A. Weiler, *A Global View of the Off-Shell Higgs Portal*, SciPost Phys. **8**, 027 (2020), doi:[10.21468/SciPostPhys.8.2.027](https://doi.org/10.21468/SciPostPhys.8.2.027), [1910.04170](https://arxiv.org/abs/1910.04170).
- [16] J. Heisig, M. Krämer, E. Madge and A. Mück, *Probing Higgs-portal dark matter with vector-boson fusion*, JHEP **03**, 183 (2020), doi:[10.1007/JHEP03\(2020\)183](https://doi.org/10.1007/JHEP03(2020)183), [1912.08472](https://arxiv.org/abs/1912.08472).
- [17] C. Englert, J. Jaeckel, M. Spannowsky and P. Stylianou, *Power meets Precision to explore the Symmetric Higgs Portal*, Phys. Lett. B **806**, 135526 (2020), doi:[10.1016/j.physletb.2020.135526](https://doi.org/10.1016/j.physletb.2020.135526), [2002.07823](https://arxiv.org/abs/2002.07823).
- [18] A. Garcia-Abenza and J. M. No, *Shining light into the Higgs portal with $\gamma\gamma$ colliders*, Eur. Phys. J. C **82**(2), 182 (2022), doi:[10.1140/epjc/s10052-022-10089-3](https://doi.org/10.1140/epjc/s10052-022-10089-3), [2011.03551](https://arxiv.org/abs/2011.03551).
- [19] U. Haisch, G. Polesello and S. Schulte, *Searching for pseudo Nambu-Goldstone boson dark matter production in association with top quarks*, JHEP **09**, 206 (2021), doi:[10.1007/JHEP09\(2021\)206](https://doi.org/10.1007/JHEP09(2021)206), [2107.12389](https://arxiv.org/abs/2107.12389).
- [20] C. Englert and M. McCullough, *Modified Higgs Sectors and NLO Associated Production*, JHEP **07**, 168 (2013), doi:[10.1007/JHEP07\(2013\)168](https://doi.org/10.1007/JHEP07(2013)168), [1303.1526](https://arxiv.org/abs/1303.1526).
- [21] N. Craig, C. Englert and M. McCullough, *New Probe of Naturalness*, Phys. Rev. Lett. **111**(12), 121803 (2013), doi:[10.1103/PhysRevLett.111.121803](https://doi.org/10.1103/PhysRevLett.111.121803), [1305.5251](https://arxiv.org/abs/1305.5251).
- [22] S.-P. He and S.-h. Zhu, *One-loop radiative correction to the triple Higgs coupling in the Higgs singlet model*, Phys. Lett. B **764**, 31 (2017), doi:[10.1016/j.physletb.2016.11.007](https://doi.org/10.1016/j.physletb.2016.11.007), [Erratum: Phys. Lett. B **797**, 134782 (2019)], [1607.04497](https://arxiv.org/abs/1607.04497).
- [23] S. Kanemura, M. Kikuchi and K. Yagyu, *One-loop corrections to the Higgs self-couplings in the singlet extension*, Nucl. Phys. B **917**, 154 (2017), doi:[10.1016/j.nuclphysb.2017.02.004](https://doi.org/10.1016/j.nuclphysb.2017.02.004), [1608.01582](https://arxiv.org/abs/1608.01582).
- [24] D. Goncalves, T. Han and S. Mukhopadhyay, *Off-Shell Higgs Probe of Naturalness*, Phys. Rev. Lett. **120**(11), 111801 (2018), doi:[10.1103/PhysRevLett.120.111801](https://doi.org/10.1103/PhysRevLett.120.111801), [Erratum: Phys. Rev. Lett. **121**, 079902 (2018)], [1710.02149](https://arxiv.org/abs/1710.02149).
- [25] D. Gonçalves, T. Han and S. Mukhopadhyay, *Higgs Couplings at High Scales*, Phys. Rev. D **98**(1), 015023 (2018), doi:[10.1103/PhysRevD.98.015023](https://doi.org/10.1103/PhysRevD.98.015023), [1803.09751](https://arxiv.org/abs/1803.09751).
- [26] C. Englert and J. Jaeckel, *Probing the Symmetric Higgs Portal with Di-Higgs Boson Production*, Phys. Rev. D **100**(9), 095017 (2019), doi:[10.1103/PhysRevD.100.095017](https://doi.org/10.1103/PhysRevD.100.095017), [1908.10615](https://arxiv.org/abs/1908.10615).

- [27] U. Haisch and G. Koole, *Probing Higgs portals with matrix-element based kinematic discriminants in $ZZ \rightarrow 4\ell$ production*, JHEP **04**, 166 (2022), doi:[10.1007/JHEP04\(2022\)166](https://doi.org/10.1007/JHEP04(2022)166), [2201.09711](https://arxiv.org/abs/2201.09711).
- [28] Y. G. Kim and K. Y. Lee, *The Minimal model of fermionic dark matter*, Phys. Rev. D **75**, 115012 (2007), doi:[10.1103/PhysRevD.75.115012](https://doi.org/10.1103/PhysRevD.75.115012), [hep-ph/0611069](https://arxiv.org/abs/hep-ph/0611069).
- [29] S. Kanemura, S. Matsumoto, T. Nabeshima and N. Okada, *Can WIMP Dark Matter overcome the Nightmare Scenario?*, Phys. Rev. D **82**, 055026 (2010), doi:[10.1103/PhysRevD.82.055026](https://doi.org/10.1103/PhysRevD.82.055026), [1005.5651](https://arxiv.org/abs/1005.5651).
- [30] A. Djouadi, O. Lebedev, Y. Mambrini and J. Quevillon, *Implications of LHC searches for Higgs-portal dark matter*, Phys. Lett. B **709**, 65 (2012), doi:[10.1016/j.physletb.2012.01.062](https://doi.org/10.1016/j.physletb.2012.01.062), [1112.3299](https://arxiv.org/abs/1112.3299).
- [31] A. Djouadi, A. Falkowski, Y. Mambrini and J. Quevillon, *Direct Detection of Higgs-Portal Dark Matter at the LHC*, Eur. Phys. J. C **73**(6), 2455 (2013), doi:[10.1140/epjc/s10052-013-2455-1](https://doi.org/10.1140/epjc/s10052-013-2455-1), [1205.3169](https://arxiv.org/abs/1205.3169).
- [32] G. Arcadi, M. Dutra, P. Ghosh, M. Lindner, Y. Mambrini, M. Pierre, S. Profumo and F. S. Queiroz, *The waning of the WIMP? A review of models, searches, and constraints*, Eur. Phys. J. C **78**(3), 203 (2018), doi:[10.1140/epjc/s10052-018-5662-y](https://doi.org/10.1140/epjc/s10052-018-5662-y), [1703.07364](https://arxiv.org/abs/1703.07364).
- [33] G. Arcadi, A. Djouadi and M. Raidal, *Dark Matter through the Higgs portal*, Phys. Rept. **842**, 1 (2020), doi:[10.1016/j.physrep.2019.11.003](https://doi.org/10.1016/j.physrep.2019.11.003), [1903.03616](https://arxiv.org/abs/1903.03616).
- [34] Z. Chacko, H.-S. Goh and R. Harnik, *The Twin Higgs: Natural electroweak breaking from mirror symmetry*, Phys. Rev. Lett. **96**, 231802 (2006), doi:[10.1103/PhysRevLett.96.231802](https://doi.org/10.1103/PhysRevLett.96.231802), [hep-ph/0506256](https://arxiv.org/abs/hep-ph/0506256).
- [35] R. Barbieri, T. Gregoire and L. J. Hall, *Mirror world at the large hadron collider* (2005), [hep-ph/0509242](https://arxiv.org/abs/hep-ph/0509242).
- [36] Z. Chacko, Y. Nomura, M. Papucci and G. Perez, *Natural little hierarchy from a partially Goldstone twin Higgs*, JHEP **01**, 126 (2006), doi:[10.1088/1126-6708/2006/01/126](https://doi.org/10.1088/1126-6708/2006/01/126), [hep-ph/0510273](https://arxiv.org/abs/hep-ph/0510273).
- [37] Z. Chacko, H.-S. Goh and R. Harnik, *A Twin Higgs model from left-right symmetry*, JHEP **01**, 108 (2006), doi:[10.1088/1126-6708/2006/01/108](https://doi.org/10.1088/1126-6708/2006/01/108), [hep-ph/0512088](https://arxiv.org/abs/hep-ph/0512088).
- [38] N. Craig, A. Katz, M. Strassler and R. Sundrum, *Naturalness in the Dark at the LHC*, JHEP **07**, 105 (2015), doi:[10.1007/JHEP07\(2015\)105](https://doi.org/10.1007/JHEP07(2015)105), [1501.05310](https://arxiv.org/abs/1501.05310).
- [39] D. Curtin and P. Saraswat, *Towards a No-Lose Theorem for Naturalness*, Phys. Rev. D **93**(5), 055044 (2016), doi:[10.1103/PhysRevD.93.055044](https://doi.org/10.1103/PhysRevD.93.055044), [1509.04284](https://arxiv.org/abs/1509.04284).
- [40] T. Hahn, *Generating Feynman diagrams and amplitudes with FeynArts 3*, Comput. Phys. Commun. **140**, 418 (2001), doi:[10.1016/S0010-4655\(01\)00290-9](https://doi.org/10.1016/S0010-4655(01)00290-9), [hep-ph/0012260](https://arxiv.org/abs/hep-ph/0012260).
- [41] A. Alloul, N. D. Christensen, C. Degrande, C. Duhr and B. Fuks, *FeynRules 2.0 - A complete toolbox for tree-level phenomenology*, Comput. Phys. Commun. **185**, 2250 (2014), doi:[10.1016/j.cpc.2014.04.012](https://doi.org/10.1016/j.cpc.2014.04.012), [1310.1921](https://arxiv.org/abs/1310.1921).

- [42] T. Hahn and M. Perez-Victoria, *Automatized one loop calculations in four-dimensions and D-dimensions*, Comput. Phys. Commun. **118**, 153 (1999), doi:[10.1016/S0010-4655\(98\)00173-8](https://doi.org/10.1016/S0010-4655(98)00173-8), [hep-ph/9807565](https://arxiv.org/abs/hep-ph/9807565).
- [43] T. Hahn, S. Paßehr and C. Schappacher, *FormCalc 9 and Extensions*, PoS **LL2016**, 068 (2016), doi:[10.1088/1742-6596/762/1/012065](https://doi.org/10.1088/1742-6596/762/1/012065), [1604.04611](https://arxiv.org/abs/1604.04611).
- [44] H. H. Patel, *Package-X: A Mathematica package for the analytic calculation of one-loop integrals*, Comput. Phys. Commun. **197**, 276 (2015), doi:[10.1016/j.cpc.2015.08.017](https://doi.org/10.1016/j.cpc.2015.08.017), [1503.01469](https://arxiv.org/abs/1503.01469).
- [45] R. Boughezal, J. M. Campbell, R. K. Ellis, C. Focke, W. Giele, X. Liu, F. Petriello and C. Williams, *Color singlet production at NNLO in MCFM*, Eur. Phys. J. C **77**(1), 7 (2017), doi:[10.1140/epjc/s10052-016-4558-y](https://doi.org/10.1140/epjc/s10052-016-4558-y), [1605.08011](https://arxiv.org/abs/1605.08011).
- [46] G. Aad *et al.*, *Constraints on the off-shell Higgs boson signal strength in the high-mass ZZ and WW final states with the ATLAS detector*, Eur. Phys. J. C **75**(7), 335 (2015), doi:[10.1140/epjc/s10052-015-3542-2](https://doi.org/10.1140/epjc/s10052-015-3542-2), [1503.01060](https://arxiv.org/abs/1503.01060).
- [47] M. Aaboud *et al.*, *Constraints on off-shell Higgs boson production and the Higgs boson total width in ZZ → 4ℓ and ZZ → 2ℓ2ν final states with the ATLAS detector*, Phys. Lett. B **786**, 223 (2018), doi:[10.1016/j.physletb.2018.09.048](https://doi.org/10.1016/j.physletb.2018.09.048), [1808.01191](https://arxiv.org/abs/1808.01191).
- [48] M. Aaboud *et al.*, *Measurement of the four-lepton invariant mass spectrum in 13 TeV proton-proton collisions with the ATLAS detector*, JHEP **04**, 048 (2019), doi:[10.1007/JHEP04\(2019\)048](https://doi.org/10.1007/JHEP04(2019)048), [1902.05892](https://arxiv.org/abs/1902.05892).
- [49] U. Haisch and G. Koole, *Off-shell Higgs production at the LHC as a probe of the trilinear Higgs coupling*, JHEP **02**, 030 (2022), doi:[10.1007/JHEP02\(2022\)030](https://doi.org/10.1007/JHEP02(2022)030), [2111.12589](https://arxiv.org/abs/2111.12589).
- [50] E. Balzani, R. Gröber and M. Vitti, *Light-quark Yukawa couplings from off-shell Higgs production*, JHEP **10**, 027 (2023), doi:[10.1007/JHEP10\(2023\)027](https://doi.org/10.1007/JHEP10(2023)027), [2304.09772](https://arxiv.org/abs/2304.09772).
- [51] F. Caola, K. Melnikov, R. Röntsch and L. Tancredi, *QCD corrections to ZZ production in gluon fusion at the LHC*, Phys. Rev. D **92**(9), 094028 (2015), doi:[10.1103/PhysRevD.92.094028](https://doi.org/10.1103/PhysRevD.92.094028), [1509.06734](https://arxiv.org/abs/1509.06734).
- [52] M. Grazzini, S. Kallweit, M. Wiesemann and J. Y. Yook, *ZZ production at the LHC: NLO QCD corrections to the loop-induced gluon fusion channel*, JHEP **03**, 070 (2019), doi:[10.1007/JHEP03\(2019\)070](https://doi.org/10.1007/JHEP03(2019)070), [1811.09593](https://arxiv.org/abs/1811.09593).
- [53] M. Grazzini, S. Kallweit, M. Wiesemann and J. Y. Yook, *Four lepton production in gluon fusion: Off-shell Higgs effects in NLO QCD*, Phys. Lett. B **819**, 136465 (2021), doi:[10.1016/j.physletb.2021.136465](https://doi.org/10.1016/j.physletb.2021.136465), [2102.08344](https://arxiv.org/abs/2102.08344).
- [54] L. Buonocore, G. Koole, D. Lombardi, L. Rottoli, M. Wiesemann and G. Zanderighi, *ZZ production at nNNLO+PS with MiNNLO_{PS}*, JHEP **01**, 072 (2022), doi:[10.1007/JHEP01\(2022\)072](https://doi.org/10.1007/JHEP01(2022)072), [2108.05337](https://arxiv.org/abs/2108.05337).
- [55] F. Cascioli, T. Gehrmann, M. Grazzini, S. Kallweit, P. Maierhöfer, A. von Manteuffel, S. Pozzorini, D. Rathlev, L. Tancredi and E. Weihs, *ZZ production at hadron colliders in NNLO QCD*, Phys. Lett. B **735**, 311 (2014), doi:[10.1016/j.physletb.2014.06.056](https://doi.org/10.1016/j.physletb.2014.06.056), [1405.2219](https://arxiv.org/abs/1405.2219).
- [56] *Off-shell Higgs boson couplings measurement using H → ZZ → 4ℓ events at High Luminosity LHC* (2015), [ATL-PHYS-PUB-2015-024](https://arxiv.org/abs/ATL-PHYS-PUB-2015-024).

- [57] *Sensitivity projections for Higgs boson properties measurements at the HL-LHC* (2018), [CMS-PAS-FTR-18-011](#).
- [58] V. Khachatryan *et al.*, *Constraints on the Higgs boson width from off-shell production and decay to Z-boson pairs*, Phys. Lett. B **736**, 64 (2014), doi:[10.1016/j.physletb.2014.06.077](#), [1405.3455](#).
- [59] A. M. Sirunyan *et al.*, *Measurements of the Higgs boson width and anomalous HVV couplings from on-shell and off-shell production in the four-lepton final state*, Phys. Rev. D **99**(11), 112003 (2019), doi:[10.1103/PhysRevD.99.112003](#), [1901.00174](#).
- [60] R. D. Ball *et al.*, *The path to proton structure at 1% accuracy*, Eur. Phys. J. C **82**(5), 428 (2022), doi:[10.1140/epjc/s10052-022-10328-7](#), [2109.02653](#).
- [61] E. W. N. Glover and J. J. van der Bij, *Higgs boson pair production via gluon fusion*, Nucl. Phys. B **309**, 282 (1988), doi:[10.1016/0550-3213\(88\)90083-1](#).
- [62] *Prospects for HH measurements at the HL-LHC* (2018), [CMS-PAS-FTR-18-019](#).
- [63] J. Alwall, R. Frederix, S. Frixione, V. Hirschi, F. Maltoni, O. Mattelaer, H. S. Shao, T. Stelzer, P. Torrielli and M. Zaro, *The automated computation of tree-level and next-to-leading order differential cross sections, and their matching to parton shower simulations*, JHEP **07**, 079 (2014), doi:[10.1007/JHEP07\(2014\)079](#), [1405.0301](#).
- [64] T. Sjöstrand, S. Ask, J. R. Christiansen, R. Corke, N. Desai, P. Ilten, S. Mrenna, S. Prestel, C. O. Rasmussen and P. Z. Skands, *An introduction to PYTHIA 8.2*, Comput. Phys. Commun. **191**, 159 (2015), doi:[10.1016/j.cpc.2015.01.024](#), [1410.3012](#).
- [65] J. de Favereau, C. Delaere, P. Demin, A. Giammanco, V. Lemaître, A. Mertens and M. Selvaggi, *DELPHES 3, A modular framework for fast simulation of a generic collider experiment*, JHEP **02**, 057 (2014), doi:[10.1007/JHEP02\(2014\)057](#), [1307.6346](#).
- [66] J. Alwall *et al.*, *Comparative study of various algorithms for the merging of parton showers and matrix elements in hadronic collisions*, Eur. Phys. J. C **53**, 473 (2008), doi:[10.1140/epjc/s10052-007-0490-5](#), [0706.2569](#).
- [67] M. Aaboud *et al.*, *Search for invisible Higgs boson decays in vector boson fusion at $\sqrt{s} = 13$ TeV with the ATLAS detector*, Phys. Lett. B **793**, 499 (2019), doi:[10.1016/j.physletb.2019.04.024](#), [1809.06682](#).
- [68] A. M. Sirunyan *et al.*, *Search for invisible decays of a Higgs boson produced through vector boson fusion in proton-proton collisions at $\sqrt{s} = 13$ TeV*, Phys. Lett. B **793**, 520 (2019), doi:[10.1016/j.physletb.2019.04.025](#), [1809.05937](#).
- [69] M. Czakon and A. Mitov, *Top++: A Program for the Calculation of the Top-Pair Cross-Section at Hadron Colliders*, Comput. Phys. Commun. **185**, 2930 (2014), doi:[10.1016/j.cpc.2014.06.021](#), [1112.5675](#).
- [70] M. Czakon, P. Fiedler and A. Mitov, *Total Top-Quark Pair-Production Cross Section at Hadron Colliders Through $O(\alpha_s^4)$* , Phys. Rev. Lett. **110**, 252004 (2013), doi:[10.1103/PhysRevLett.110.252004](#), [1303.6254](#).
- [71] R. D. Ball *et al.*, *Parton distributions with LHC data*, Nucl. Phys. B **867**, 244 (2013), doi:[10.1016/j.nuclphysb.2012.10.003](#), [1207.1303](#).

- [72] M. Cepeda *et al.*, *Report from Working Group 2: Higgs Physics at the HL-LHC and HE-LHC*, CERN Yellow Rep. Monogr. **7**, 221 (2019), doi:[10.23731/CYRM-2019-007.221](https://doi.org/10.23731/CYRM-2019-007.221), [1902.00134](https://arxiv.org/abs/1902.00134).
- [73] D. Curtin and S. Gryba, *Twin Higgs portal dark matter*, JHEP **08**, 009 (2021), doi:[10.1007/JHEP08\(2021\)009](https://doi.org/10.1007/JHEP08(2021)009), [2101.11019](https://arxiv.org/abs/2101.11019).
- [74] R. Barbieri, L. J. Hall and K. Harigaya, *Minimal Mirror Twin Higgs*, JHEP **11**, 172 (2016), doi:[10.1007/JHEP11\(2016\)172](https://doi.org/10.1007/JHEP11(2016)172), [1609.05589](https://arxiv.org/abs/1609.05589).
- [75] *Projections for measurements of Higgs boson cross sections, branching ratios, coupling parameters and mass with the ATLAS detector at the HL-LHC* (2018), [ATL-PHYS-PUB-2018-054](https://arxiv.org/abs/ATL-PHYS-PUB-2018-054).
- [76] F. Zimmermann, M. Benedikt, M. Capeans Garrido, F. Cerutti, B. Goddard, J. Gutleber, J. M. Jimenez, M. Mangano, V. Mertens, J. A. Osborne, T. Otto, J. Poole *et al.*, *HE-LHC: The High-Energy Large Hadron Collider: Future Circular Collider Conceptual Design Report Volume 4. Future Circular Collider*, CERN, Geneva, doi:[10.1140/epjst/e2019-900088-6](https://doi.org/10.1140/epjst/e2019-900088-6) (2018).
- [77] M. Benedikt, M. Capeans Garrido, F. Cerutti, B. Goddard, J. Gutleber, J. M. Jimenez, M. Mangano, V. Mertens, J. A. Osborne, T. Otto, J. Poole, W. Riegler *et al.*, *FCC-hh: The Hadron Collider: Future Circular Collider Conceptual Design Report Volume 3. Future Circular Collider*, CERN, Geneva, doi:[10.1140/epjst/e2019-900087-0](https://doi.org/10.1140/epjst/e2019-900087-0) (2018).
- [78] A. Abada *et al.*, *FCC Physics Opportunities: Future Circular Collider Conceptual Design Report Volume 1*, Eur. Phys. J. C **79**(6), 474 (2019), doi:[10.1140/epjc/s10052-019-6904-3](https://doi.org/10.1140/epjc/s10052-019-6904-3).
- [79] D. Gonçalves, T. Han, F. Kling, T. Plehn and M. Takeuchi, *Higgs boson pair production at future hadron colliders: From kinematics to dynamics*, Phys. Rev. D **97**(11), 113004 (2018), doi:[10.1103/PhysRevD.97.113004](https://doi.org/10.1103/PhysRevD.97.113004), [1802.04319](https://arxiv.org/abs/1802.04319).
- [80] W. Bizoń, U. Haisch and L. Rottoli, *Constraints on the quartic Higgs self-coupling from double-Higgs production at future hadron colliders*, JHEP **10**, 267 (2019), doi:[10.1007/JHEP10\(2019\)267](https://doi.org/10.1007/JHEP10(2019)267), [1810.04665](https://arxiv.org/abs/1810.04665).
- [81] J. de Blas *et al.*, *Higgs Boson Studies at Future Particle Colliders*, JHEP **01**, 139 (2020), doi:[10.1007/JHEP01\(2020\)139](https://doi.org/10.1007/JHEP01(2020)139), [1905.03764](https://arxiv.org/abs/1905.03764).
- [82] M. Aaboud *et al.*, *Combination of searches for invisible decays of the Higgs boson using 139 fb⁻¹ of proton-proton collision data at $\sqrt{s} = 13$ TeV collected with the ATLAS experiment*, Phys. Lett. B **842**, 137963 (2023), doi:[10.1016/j.physletb.2023.137963](https://doi.org/10.1016/j.physletb.2023.137963), [2301.10731](https://arxiv.org/abs/2301.10731).
- [83] A. Tumasyan *et al.*, *A search for decays of the Higgs boson to invisible particles in events with a top-antitop quark pair or a vector boson in proton-proton collisions at $\sqrt{s} = 13$ TeV*, Eur. Phys. J. C **83**(10), 933 (2023), doi:[10.1140/epjc/s10052-023-11952-7](https://doi.org/10.1140/epjc/s10052-023-11952-7), [2303.01214](https://arxiv.org/abs/2303.01214).